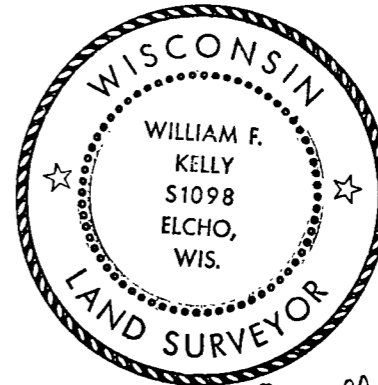


CERTIFIED LAND CORNER RESTORATION

Index No. R-19-20

State of Wisconsin }  
County of LANGLADE } ss.

History of original corner establishment:



William F. Kelly

I, William F. Kelly, do hereby certify that on the 31<sup>st</sup> day of OCTOBER, 1974, I found evidence of the MEANDER corner of THE S. LINE SECT 23 Township 34 North, Range 11 E, Fourth Principal Meridian, as described hereon; and that from this evidence I established a new monument and accessories as described hereon to perpetuate the original location of this corner.

Description of corner evidence found:

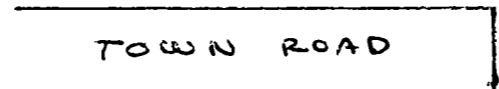
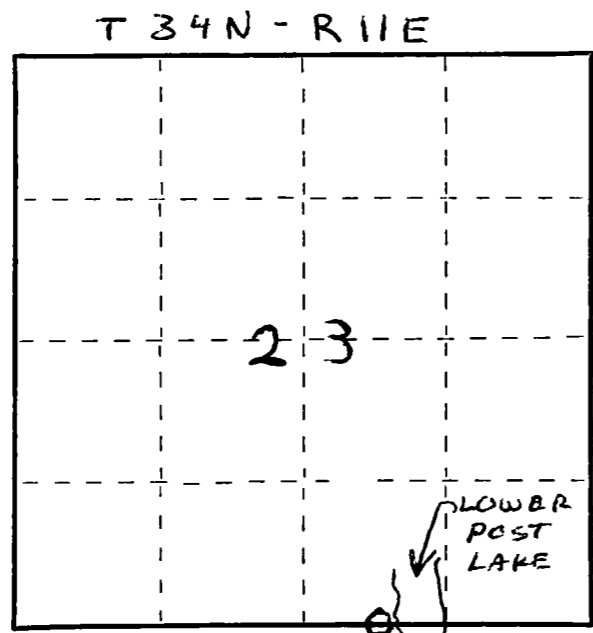
LOCATED A 1" IRON PIPE ON THE SOUTH LINE SECT. 23-T. 34N. - R. 11E. 35 FT. WEST OF THE SHORE OF LOWER POST LAKE ON A LINE BETWEEN THE 1/4 COR SECT 23/26 AND SECT COR 23/24 26/25

Resident witnesses:

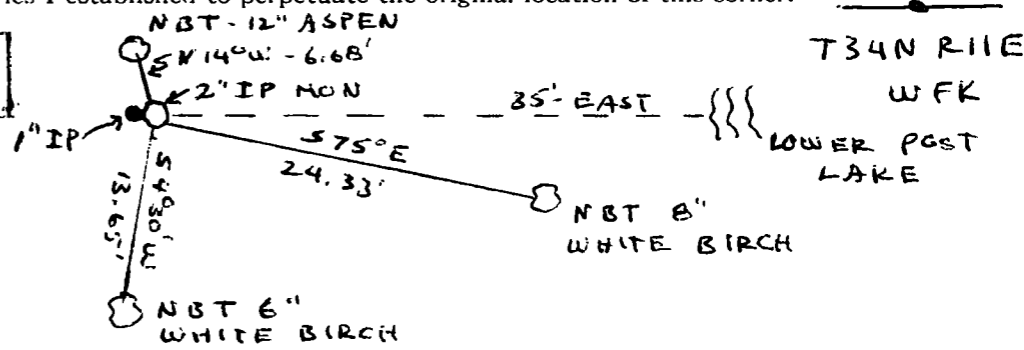
J. KLOPPTEK

I SET A 2" BLACK IRON PIPE WITH BRASS CAP ON THE EAST SIDE OF THE 1" I.P. FOUND

Description of monument and accessories I established to perpetuate the original location of this corner.



NEW BEARING TREES BLAZED NBT AND MARKED WITH A + AT BASE



Dated at ELCHO, Wis., this 31<sup>st</sup> day of OCTOBER, 1974

Signature: William F. Kelly Title: REG. LAND SURVEYOR Registration No. S-1098

Office of Register of Deeds, County of \_\_\_\_\_, I hereby certify that the within instrument was filed in this office for record on the \_\_\_\_\_ day of \_\_\_\_\_, 19\_\_\_\_ at \_\_\_\_\_ o'clock \_\_\_\_\_ M.

(Register of Deeds)

By \_\_\_\_\_ Deputy

FORM 985 H. C. MILLER CO., MILWAUKEE

O = Corner monument restored.