

CERTIFIED LAND CORNER RESTORATION

Index No. 0-11

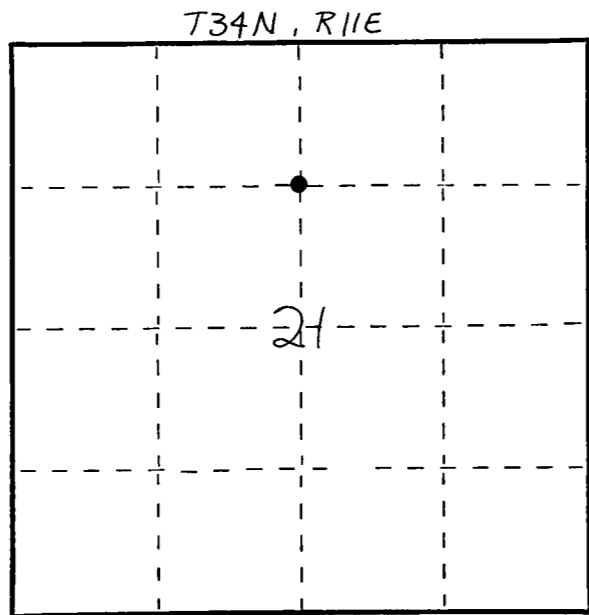
State of Wisconsin } ss.  
County of LANGLADE

I WILLIAM F. KELLY, do hereby certify that on the 21<sup>ST</sup> day of JULY, 19.80., I found evidence of the N 1/8 corner of QN. N-S 1/4 LINE, SECTION 21, Township 34 North, Range 11 EAST, Fourth Principal Meridian, as described hereon; and that from this evidence I established a new monument and accessories as described hereon to perpetuate the original location of this corner.

Resident witnesses:

.....  
.....  
.....

FORM 985 M. C. MILLER CO., MILWAUKEE



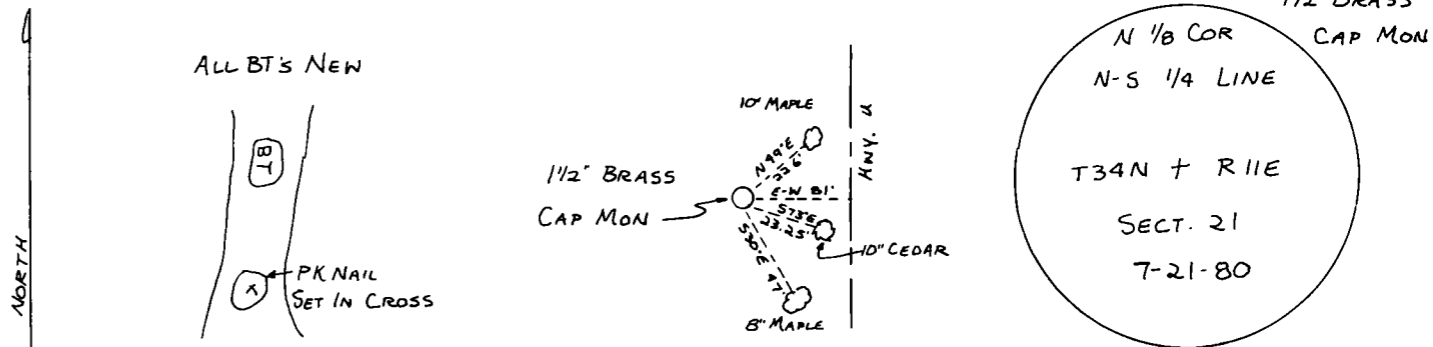
○ = Corner monument restored.

History of original corner establishment:  
ORIGINAL CORNER ESTABLISHED BY  
WM E DAUGHERTY IN JULY, 1859.

Description of corner evidence found:  
SET A 1 1/2" x 42" BLACK IRON PIPE  
WITH BRASS CAP MONUMENT



Description of monument and accessories I established to perpetuate the original location of this corner.



Dated at ELCHO, Wis., this 21<sup>ST</sup> day of JULY, 19.80.

Signature William F. Kelly Title COUNTY SURVEYOR Registration No. 1098  
(County Surveyor, Registered Land Surveyor, or other duly authorized official)

Office of Register of Deeds, County of \_\_\_\_\_, I hereby certify that the within instrument was filed in this office for record on the \_\_\_\_\_ day of \_\_\_\_\_, 19.\_\_\_\_ at \_\_\_\_\_ o'clock \_\_\_\_\_ M.

(Register of Deeds)

By \_\_\_\_\_ Deputy