

CERTIFIED LAND CORNER RESTORATION

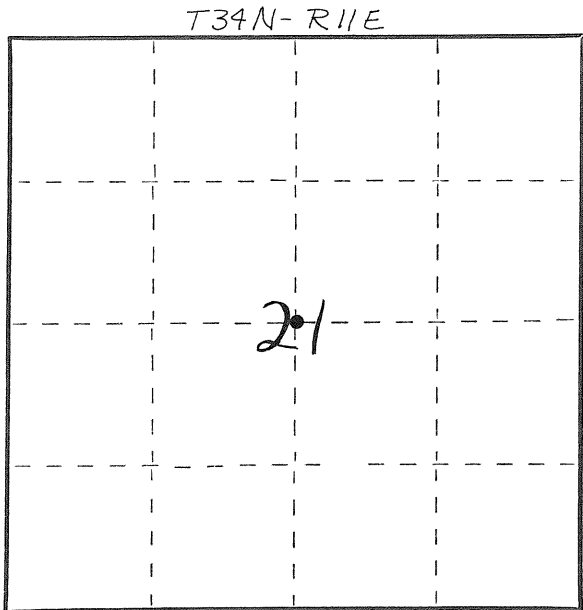
Index No. P-11

State of Wisconsin }
 County of LANGLADE } ss.

I WILLIAM F. KELLY, do hereby certify that on the 22ND day of JULY, 1980, I found evidence of the CENTER corner of SECTION 21 Township 34, North, Range 11 EAST, Fourth Principal Meridian, as described hereon; and that from this evidence I established a new monument and accessories as described hereon to perpetuate the original location of this corner.

Resident witnesses:

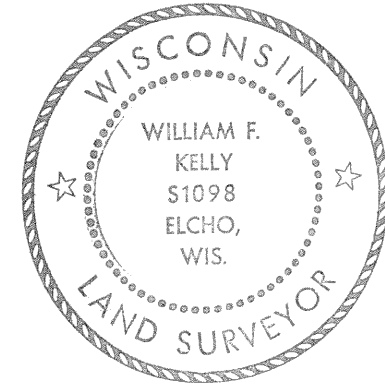
.....



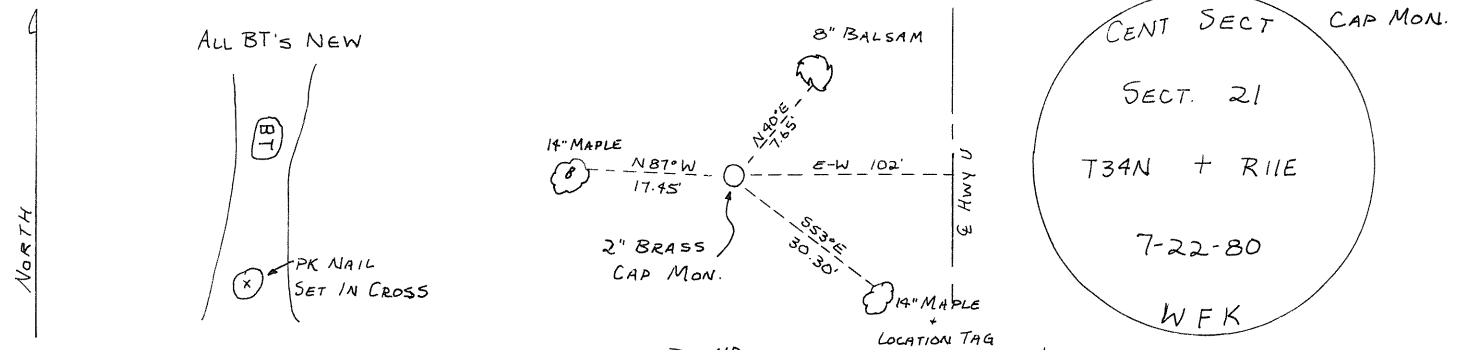
○ = Corner monument restored.

History of original corner establishment:
ORIGINAL CORNER ESTABLISHED BY
WM. E. DAUGHERTY IN JULY, 1859.

Description of corner evidence found:
SET A 2" x 42" BLACK IRON PIPE
WITH BRASS CAP MONUMENT.



Description of monument and accessories I established to perpetuate the original location of this corner.



Dated at ELCHO, Wis., this 22ND day of JULY, 1980.

Signature William F. Kelly Title COUNTY SURVEYOR Registration No. 1098
 (County Surveyor, Registered Land Surveyor, or other duly authorized official)

Office of Register of Deeds, County of, I hereby certify that the within instrument was filed in this office for record on the day of, 19..... at o'clock M.

.....
 (Register of Deeds)

By Deputy