

43411212000

U.S. PUBLIC LAND SURVEY MONUMENT RECORD

(Prepared and as required by S. A-E 7.08 Wi Administrative Code)

The West 1/4 corner of Section 22, T. 34N., R11E., Langlade County, WI

Corner was: (check all that apply)

- Restored through acceptance of an obliterated evidence location.
- Restored through acceptance of a found perpetuated location.
- Determined to be lost and reestablished through proportionate methods.**
(Show bearings and distances to PLSS corners used for proportioning)
- Restored/recovered/reestablished in a location that differs from a previously established position. (Show difference in plan view below.)
- Check here if additional information is shown on the reverse side of this form.

Describe record evidence, recovered physical evidence, occupational evidence, testimonial evidence and all other evidence considered in the recovery/restoration of corner.

1859: Corner originally set by W. Daughterty. BT's Cedar 8", N6°W, 8 links; Spruce 6", S35°E, 17 links.

1960: FR Wincentzen surveyed Section 22. His survey map did not indicate any West1/4 corner set or found. His map showed the West1/4 corner mid-point between the section corners, 2679.75' from each.

2006: I set the West1/4 corner mid-point between the section corners. The location checks well with the original GLO passing calls for the creek after considering the higher water level due to the Post Lake Dam.

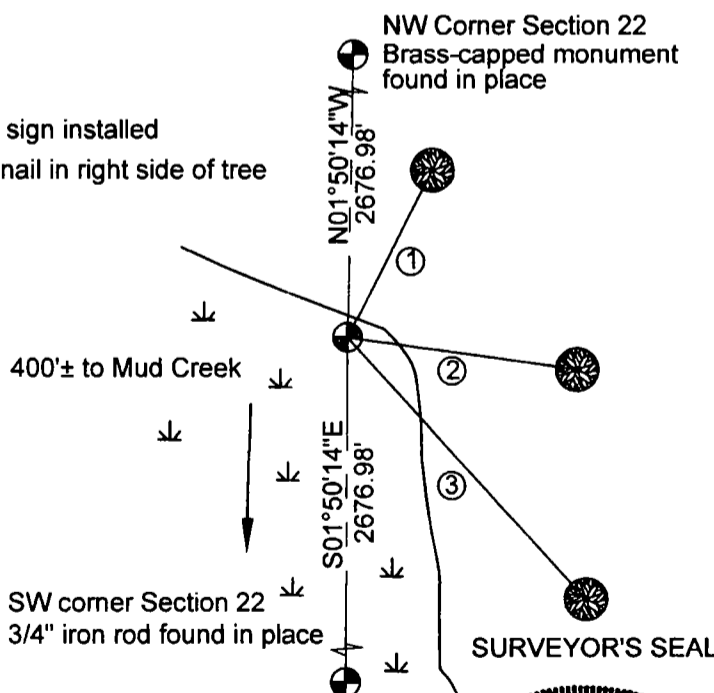
Physical description of the monument set:

I set a 1.315" x 72" long pipe, with ties as detailed below.

Describe the accessories used to perpetuate the location of the corner. Include a plan view drawing and indicate accessories found/set. Describe measuring point on bearing trees. Show any topographic features that would aid in future recovery of the corner.

- ① 9" Fir N3°E 38.13'
- ② 8" Balsam S79°E 57.65'
- ③ 12" Maple S38°E 86.04'

BT's are blazed and BT sign installed
Distances measured to nail in right side of tree



Section bearings are referenced to
Langlade Co. coordinate system grid
Bearings to ties are magnetic

NOT TO SCALE

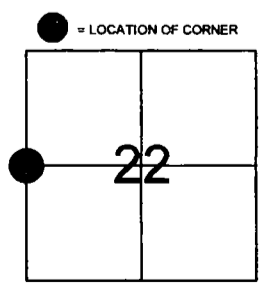
DRAFTED BY:
PAUL MATTMILLER

I, Timothy J. Rusch RLS 2671, certify that the corner location shown on this record was determined by me or under my direction and control and that this U.S. Public Land Survey Record is correct and complete to the best of my knowledge and belief.

Timothy J. Rusch 8-8-2006
Signature Date



The West 1/4 corner of Section 22
T. 34 N., R. 11 E.
Langlade County, WI



INDEX NO. P 13 34-11