

CERTIFIED LAND CORNER RESTORATION

Index No. R.2

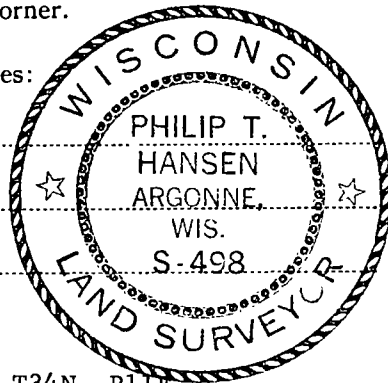
State of Wisconsin }
County of Langlade } ss.

I Philip T. Hansen, do hereby certify that on the 22nd day of October, 1975, I found evidence of the W-1/16 corner of Sections 19 and 30 Township 34, North, Range 11 East, Fourth Principal Meridian, as described hereon; and that from this evidence I established a new monument and accessories as described hereon to perpetuate the original location of this corner.

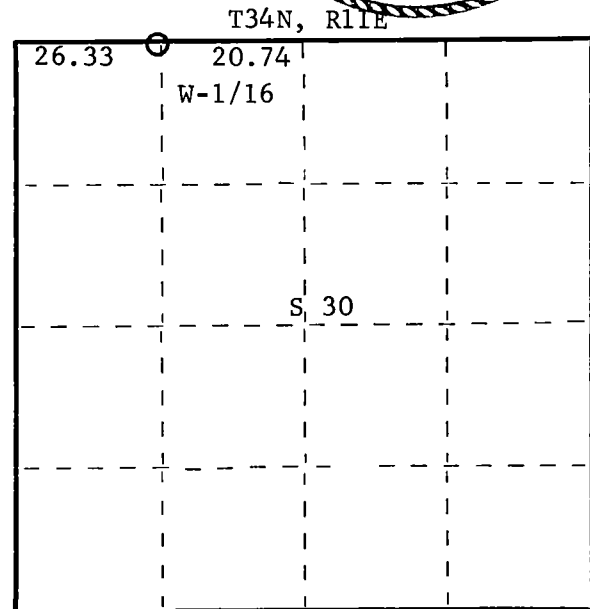
Resident witnesses:

Glen Barker

Jim Claflin



FORM 985 H. C. MILLER CO., MILWAUKEE



○ = Corner monument restored.

History of original corner establishment:

No record of this corner having been previously set.

Description of corner evidence found:

This corner established by running random line west from Section Corners 19, 20, 29, and 30 a distance of 88.55 chains to a point 81 lks. north of Section Corners 19, 30, 24, and 25. Original measurement was 85.37 chains. Set new post at 62.22 chains west and 57 lks. south. Corrected bearing of line S89°28'W.

Description of monument and accessories I established to perpetuate the original location of this corner.

Set 2" iron pipe with brass cap stamped -
Pipe projects 12" above ground.
Established NBT's Elm 10", N59°W, 53 lks. scribed 1/16 BT.
Corner sets 40 lks. north of Hunting River.
No other trees suitable for BT's.
Pipe and BT painted blue.

S498
T34N, R11E
S 19
W-1/16
S 30
1975

Dated at Rhineland, Wis., this 24th day of October, 1975

Signature Philip T. Hansen Title Registered Land Surveyor Registration No. S-498
(County Surveyor, Registered Land Surveyor, or other duly authorized official)

Office of Register of Deeds, County of Langlade, I hereby certify that the within instrument was filed in this office for record on the _____ day of _____, 19____ at _____ o'clock _____ M.

(Register of Deeds)

By _____ Deputy JS.