

4341190020

# U.S. PUBLIC LAND SURVEY MONUMENT RECORD

(Prepared and as required by S. A-E 7.08 WI Administrative Code)

The South 1/4 corner of Section 19, T. 34 N., R. 11 E., Langlade County, WI  
Corner was (check all that apply)

- Restored through acceptance of an obliterated evidence location.
- Restored through acceptance of a found perpetuated location.
- Determined to be lost and re-established through proportionate methods.  
(show bearings and distances to PLSS corners used for proportioning.)
- Restored/recovered/re-established in a location that differs from a previously established position. (Show difference in plan view below.)
- Check here if additional information is shown on the reverse side of this form.

**Describe record evidence, recovered physical evidence, occupational evidence, testimonial evidence and all other evidence considered in the recovery/restoration of the corner.**

June 1859 - W.E. Daugherty originally set corner. BT's: Aspen 10", N64W, 18 links; Aspen 12", S56E, 23 links.

Sept. 1905 - E.S. Brooks surveyed South line of Section 19, noted "original maple BT down and rotten"  
Set new pine stump BT 24": S70W, 79 links.

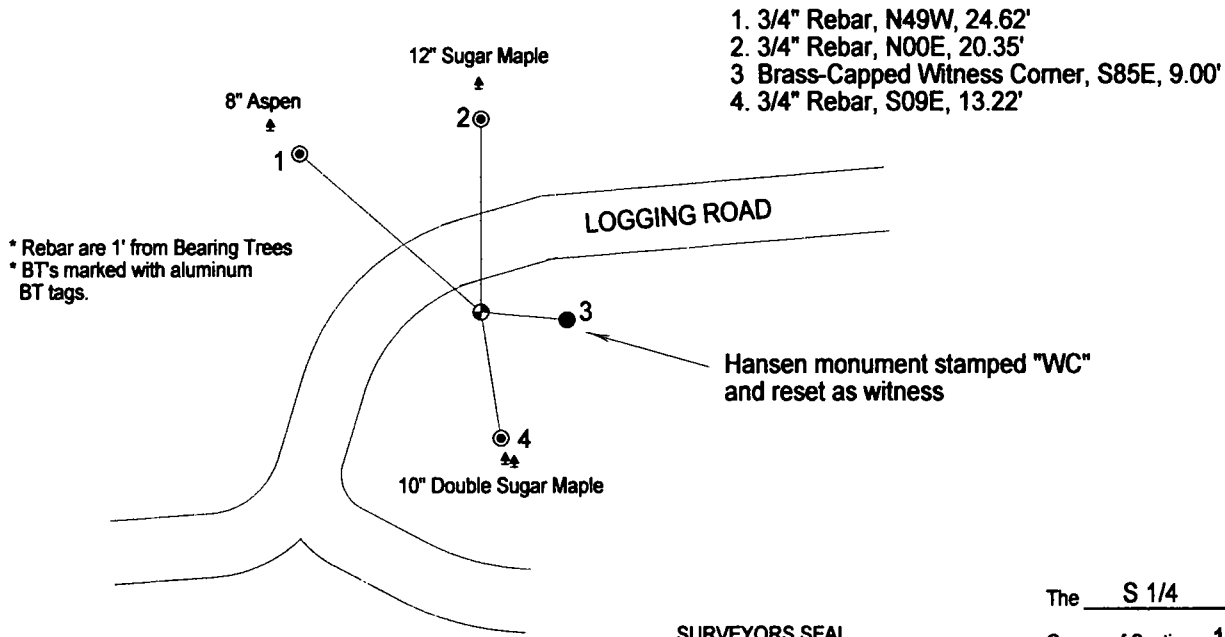
October 1975 - RLS Philip Hansen retraced Brooks' survey, setting 2 1/2" iron pipe with brass cap and new BT's: Oak 22", S20E, 21.8 links; Elm 10", N52W, 191.8 links.

January 2006 - I found Hansen's monument dislodged and leaning against a stump. I found Hansen's Oak BT (now dead) and the stump of Hansen's Elm BT. I re-established the corner from Hansen's ties.

### Physical description of the monument set:

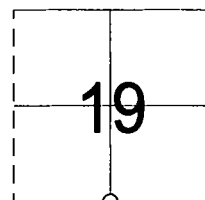
I set a 3/4 inch rebar at the edge of a logging road, with ties as described below.

Describe the accessories used to perpetuate the location of the corner. Include a plan view drawing and indicate accessories found/set. Describe measuring point on bearing trees. Show any topographic features that would aid in future recovery of the corner.



Bearings to ties are magnetic

The S 1/4  
Corner of Section 19  
T. 34 N., R. 11 E.  
Langlade County, WI



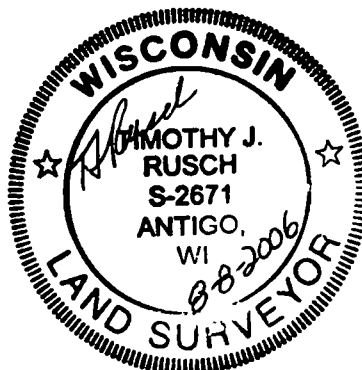
○ = Location of corner

INDEX No. R3  
34-11

I, Timothy J. Rusch, certify that the corner location shown on this record was determined by me or under my direction and control and that this U.S. Public Land Survey Monument Record is correct and complete to the best of my knowledge and belief.

Timothy J. Rusch  
Signature

8-8-2006  
Date



CERTIFIED LAND CORNER RESTORATION

Index No. R. B.

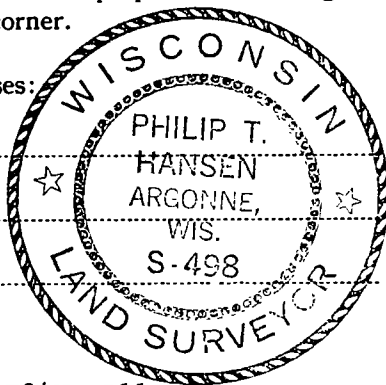
State of Wisconsin }  
County of Langlade } ss.

I, Philip T. Hansen, do hereby certify that on the 22nd day of October, 1975, I found evidence of the Quarter corner of Sections 19 and 30 Township 34, North, Range 11 East, Fourth Principal Meridian, as described hereon; and that from this evidence I established a new monument and accessories as described hereon to perpetuate the original location of this corner.

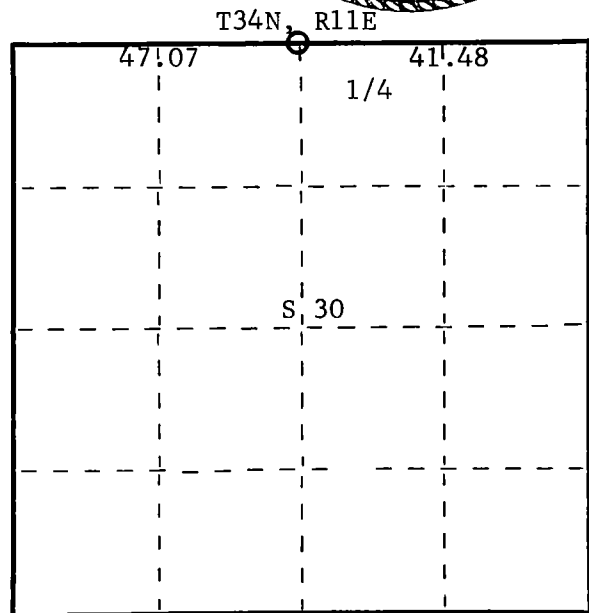
Resident witnesses:

Glen Barker

Jim Claflin



FORM 985 H. C. MILLER CO., MILWAUKEE



○ = Corner monument restored.

History of original corner establishment:

Original corner established by H.C. Fellows, Government Deputy Surveyor.

Description of corner evidence found:

No evidence of any corner or accessories recovered. Established corner by running random line west from Section Corners 19, 20, 29, and 30, recovered intact, a distance of 88.55 chains, to a point 81 ~~chains~~ <sup>links</sup> north of Section Corners 19, 30, 24, and 25. Original distance was 85.37 chains. Set corner at 41.48 chains and 38 lks. south. Bearing of corrected line S89°28'W.

Description of monument and accessories I established to perpetuate the original location of this corner.

Set 2-1/2" iron pipe with brass cap stamped - S498  
Pipe projects 12" above ground. T34N R11E

Established NBT's Oak 22" S20°E 21.8 lks. scribed 1/4 BT. S | 19  
Elm 10" N52°W 191.8 lks. scribed 1/4 BT. 1/4 | —

Post and BT's painted blue. S | 30  
1975

Dated at Rhineland, Wis., this 24th day of October, 1975.

Signature Philip T. Hansen Title Registered Land Surveyor Registration No. S-498  
(County Surveyor, Registered Land Surveyor, or other duly authorized official)

Office of Register of Deeds, County of Langlade, I hereby certify that the within instrument was filed in this office for record on the \_\_\_\_\_ day of \_\_\_\_\_, 19\_\_\_\_ at \_\_\_\_\_ o'clock \_\_\_\_\_ M.

(Register of Deeds)

By \_\_\_\_\_ Deputy GS.