

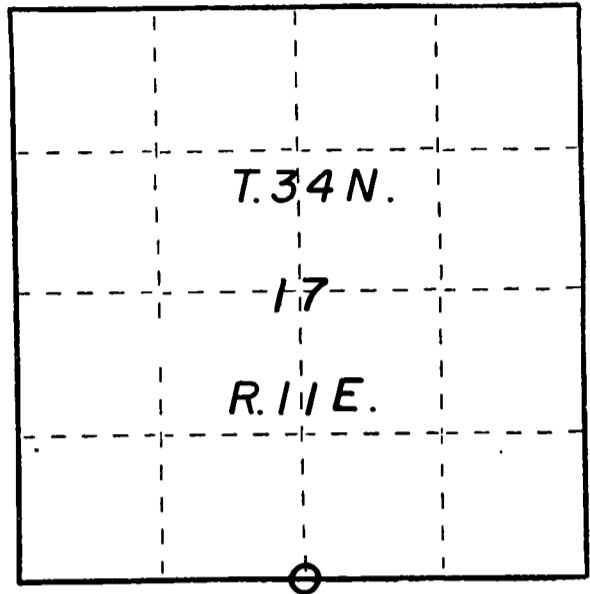
# U. S. PUBLIC LAND SURVEY MONUMENT RECORD

**INSTRUCTIONS :**

This record shall show the location of the corner and shall include all of the following nine elements (a through i).

- (a) Identify the corner by reference to the U.S. public land survey system.

○ = Corner monument restored.



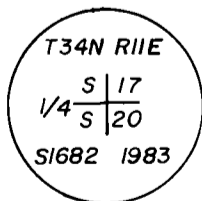
- (b) Describe any record evidence, monument evidence, occupational evidence, testimonial evidence or any other material evidence you considered, and whether the monument was found or placed.

Re-established quarter section corner by retracement of B.F. Dorr survey in 1901. Ran from Dorr's C 1/4 to N 1/4 of section 17 for alignment and check on distance. Dorr had a recorded distance of 2731.08 feet, our distance is 2729.75 feet. Ran east-west quarter line for alignment. Found a four minute bust at C 1/4. On the basis that Dorr's survey was correct and sound, I extended same alignment of C 1/4 to N 1/4 south 3466.33 feet, B.F. Dorr's recorded distance from C 1/4 to S 1/4 section 17. Local land owners witnessed the old monument at this position.

- (c) In the plan view drawing below, provide reference ties to at least 4 witness monuments, or, if the location is within a municipality, to at least 2 witness monuments. (Witness monuments shall be made of concrete, natural stone, iron or other equally durable material.) Describe witness monuments.

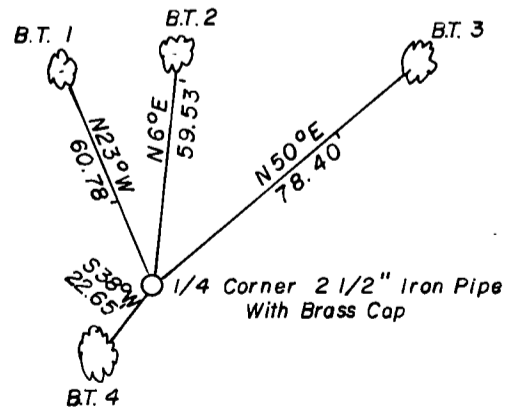
- (d) Show a plan view drawing depicting the relevant monuments and reference ties which is sufficient in detail to enable accurate relocation of the corner monument if the corner monument is disturbed. Indicate north.

BRASS CAP STAMPED:



6" Above Ground

SCALE : 1" = 50'



NEW BEARING TREES:

- 1 Tamarack 5"
- 2 Tamarack 7"
- 3 Tamarack 5"
- 4 Tamarack 3"

Tyes to N<sup>o</sup>. 16 Nail in Tree

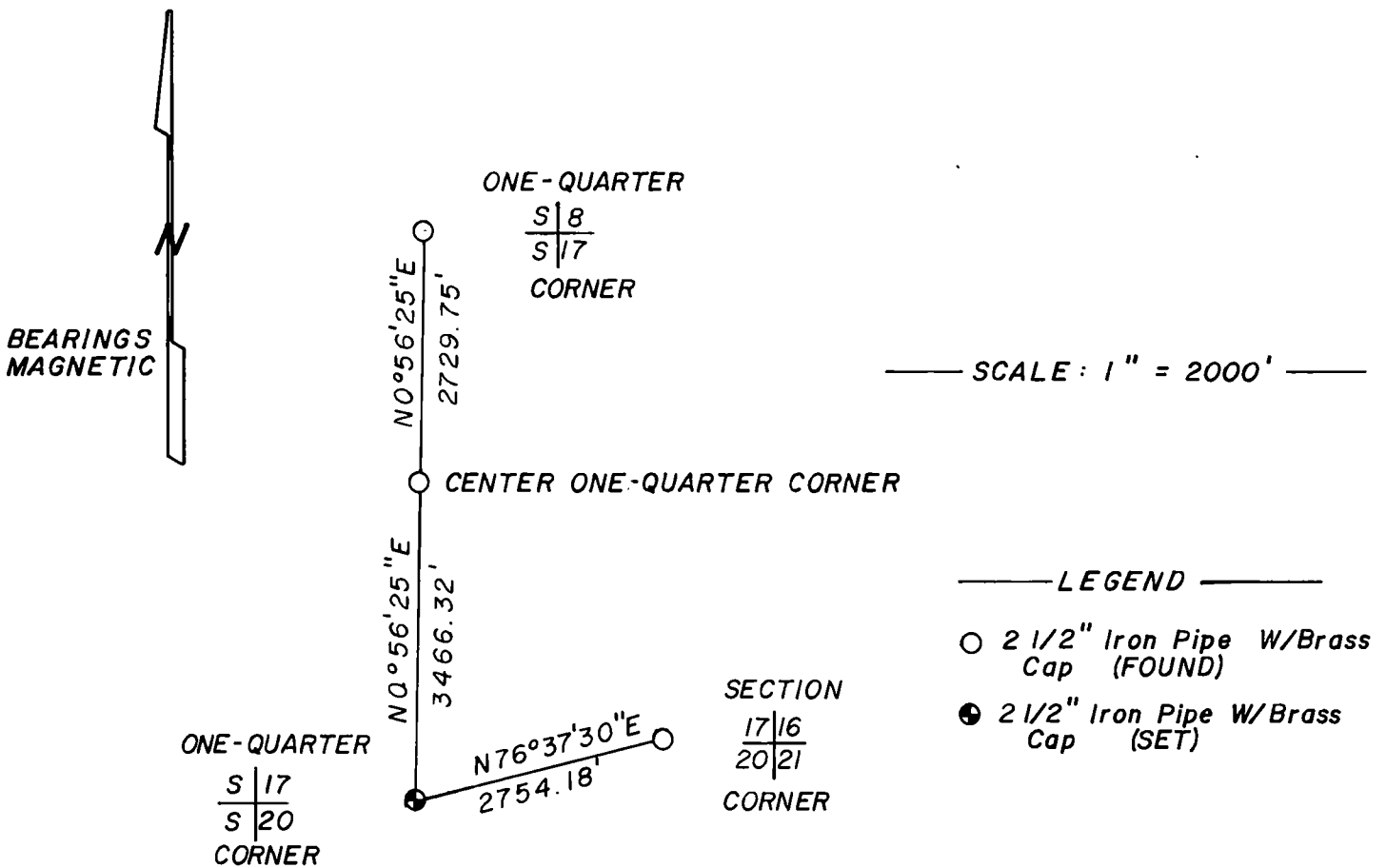
(e) Describe any material discrepancy between the location of the corner as restored or reestablished and the location of that corner as previously restored or reestablished by distance and direction. Show the discrepancy on the plan view drawing under (d), above. Show the distances between the corner as previously restored or reestablished and (1) the corner as restored or reestablished, and (2) to at least 2 of the witness monuments shown on the drawing in (d), above.

See drawing below.

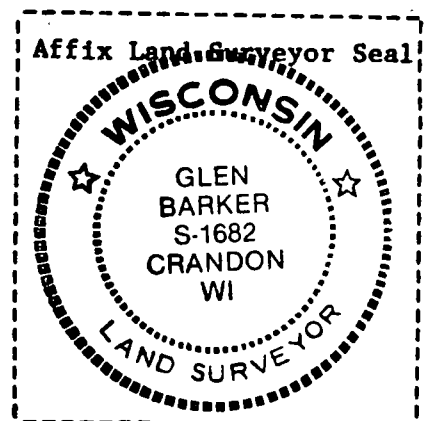
(f) Was the corner restored through acceptance of (1) an obliterated evidence location, or, (2) a found perpetuated location?

Corner re-established by retracement.

(g&h) Was the corner reestablished through lost corner proportionate methods? If so, show the method, including the directions and distances to other public land survey corners used as evidence or used for proportioning in determining the corner location?



(i) I, Glen Barker  
(type or print name) certify that the corner location shown on this record was determined by me or under my direction and control and that this U.S. Public Land Survey Monument Record is correct and complete to the best of my knowledge and belief.



Glen Barker  
Signature

12/23/83  
Date