

CERTIFIED LAND CORNER RESTORATION

Index No. 14-8

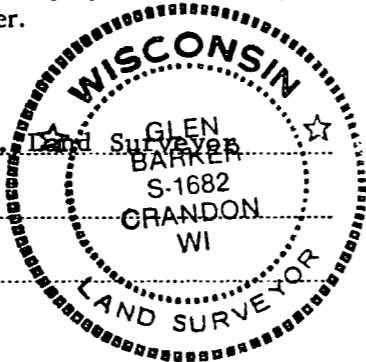
State of Wisconsin }
County of Langlade } ss.

I, Glen Barker, do hereby certify that on the 25th day of October, 1983, I found established the corner of Sections 17 & 20 Township 34 North, Range 11 East, Fourth Principal Meridian, as described hereon; and that from this evidence I established a new monument and accessories as described hereon to perpetuate the original location of this corner.

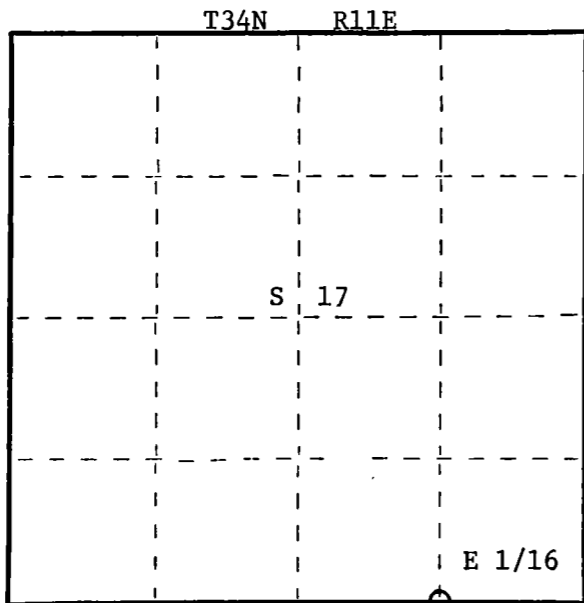
Resident witnesses:

J. Claflin, Reg.

H. Wagoner



Stock No. 26272
FORM 985



○ = Corner monument restored.

History of original corner establishment:

No evidence of any previous corner.

Description of corner evidence found:

Total distance from recovered section corner 16-17-20-21 to previously re-established 1/4 corner between section 17 and 20 is 2754.18 feet.

Set E 1/16 1377.09 intermediate.

Description of monument and accessories I established to perpetuate the original location of this corner.

Set a 1" iron pipe with 2" diameter alloy cap - stamped:
Monument projects 18" above ground.

Marked NBTs -
Oak 8" S63E 31.05 feet
Sugar 6" S12W 33.70 feet
scribed 1/16-B.T.

S-1682
T34N R11E
E 1/16 S 17
S 20
CPI-1983

Dated at Rhinelander, Wis., this 19th day of December, 1983

Signature: Glen Barker Title: Registered Land Surveyor Registration No. S-1682
(County Surveyor, Registered Land Surveyor, or other duly authorized official)

Office of Register of Deeds, County of _____, I hereby certify that the within instrument was filed in this office for record on the _____ day of _____, 19____ at _____ o'clock _____ M.

(Register of Deeds)

By _____ Deputy