

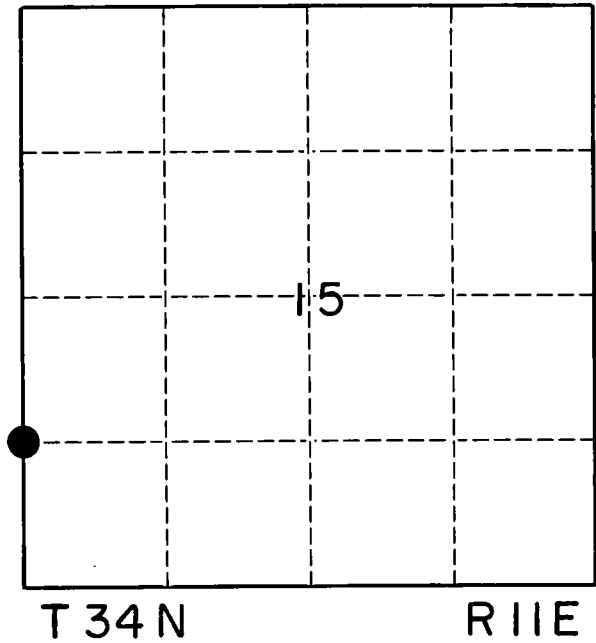
U. S. PUBLIC LAND SURVEY MONUMENT RECORD

INSTRUCTIONS:

This record shall show the location of the corner and shall include all of the following nine elements (a through i).

- (a) Identify the corner by reference to the U.S. public land survey system.
 O = Corner monument restored.

This corner was not originally set in the PLSS. We re-tied this corner set by Robert J. Poss in 1969.

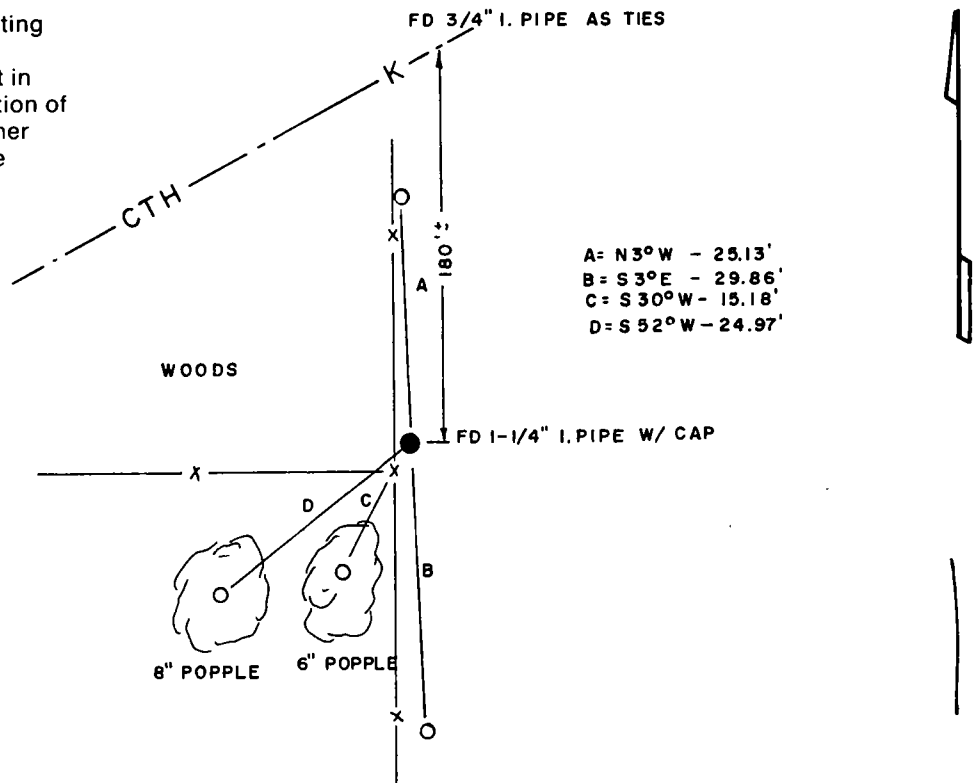


- (b) Describe any record evidence, monument evidence, occupational evidence, testimonial evidence or any other material evidence you considered, and whether the monument was found or placed.

We re-tied this corner to perpetuate its location and to make it easier to locate for future users. This corner exists along a fence line between a cultivated field to the East and woods to the West. This corner lies S 20° W, 303' from an existing Langlade County GPS monument.

- (c) In the plan view drawing below, provide reference ties to at least 4 witness monuments, or, if the location is within a municipality, to at least 2 witness monuments. (Witness monuments shall be made of concrete, natural stone, iron or other equally durable material.) Describe witness monuments.

- (d) Show a plan view drawing depicting the relevant monuments and reference ties which is sufficient in detail to enable accurate relocation of the corner monument if the corner monument is disturbed. Indicate north.



Describe any material discrepancy between the location of the corner as restored or reestablished and the location of that corner as previously restored or reestablished by distance and direction. Show the discrepancy on the plan view drawing under (d), above. Show the distances between the corner as previously restored or reestablished and (1) the corner as restored or reestablished, and (2) to at least 2 of the witness monuments shown on the drawing in (d), above.

N/A

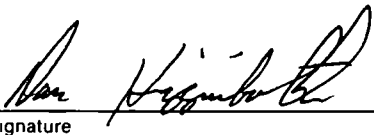
(f) Was the corner restored through acceptance of (1) an obliterated evidence location, or, (2) a found perpetuated location.?

2)

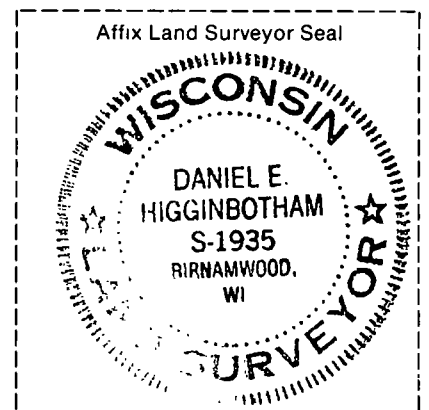
(g & h) Was the corner reestablished through lost corner proportionate methods? If so, show the method, including the directions and distances to other public land survey corners used as evidence or used for proportioning in determining the corner location.

(i) I, DAN HIGGINBOTHAM
(type or print name)

certify that the corner location shown on this record was determined by me or under my direction and control and that this U.S. Public Land Survey Monument Record is correct and complete to the best of my knowledge and belief.


Signature

1-10-95
Date



CERTIFIED LAND CORNER RESTORATION

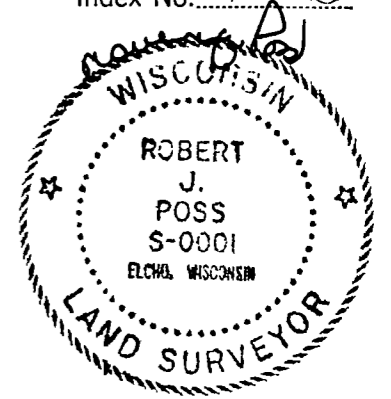
34-11

Index No. M-13

State of Wisconsin }
 County of LANGLADE } ss.

I, ROBERT J. POSS, do hereby certify that on the 28TH day of JUNE, 1969, I found evidence of the SOUTH 1/16 corner of SECS. 15 & 16 Township 34, North, Range 11 EAST, Fourth, Principal Meridian, as described hereon; and that from this evidence I established a new monument and accessories as described hereon to perpetuate the original location of this corner.

History of original corner establishment:



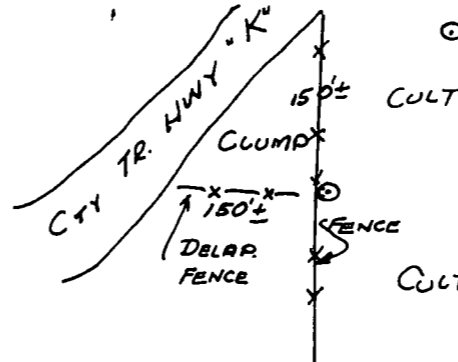
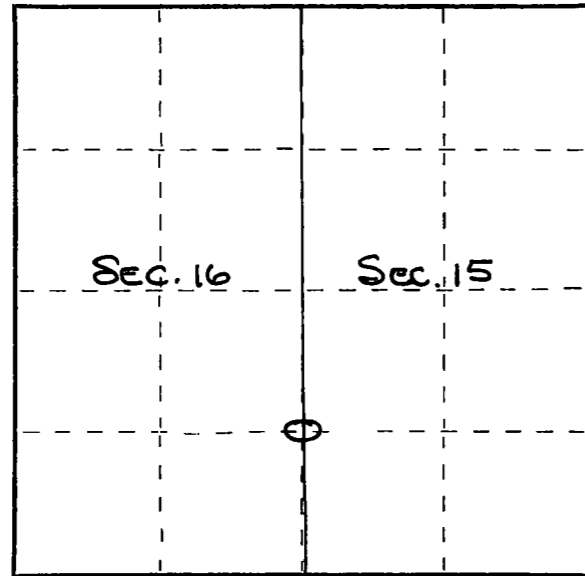
Description of corner evidence found:

FOUND BUTT OF SQUARED STAKE - BADLY DECAYED.

Resident witnesses:

.....

Description of monument and accessories I established to perpetuate the original location of this corner.



⊙ = 1 1/4" IRON PIPE W/GALV. CAP.
 MKD S 1/16
 SEC. 16 SEC. 15

CLUMP CONSISTS OF DENSE GROWTH - HAZEL, CHERRY - ASPEN - BIRCH ALL IN POOR CONDITION OR TOO SMALL FOR MARKING.

Dated at ELCHO, Wis., this 28TH day of JUNE, 1969.

Signature Robert J. Poss Title REG. LAND SURVEYOR Registration No. S-0001
 (County Surveyor, Registered Land Surveyor, or other duly authorized official)

Office of Register of Deeds, County of _____, I hereby certify that the within instrument was filed in this office for record on the _____ day of _____, 19____ at _____ o'clock _____ M.

.....
 (Register of Deeds)

By _____ Deputy

⊙ = Corner monument restored.