

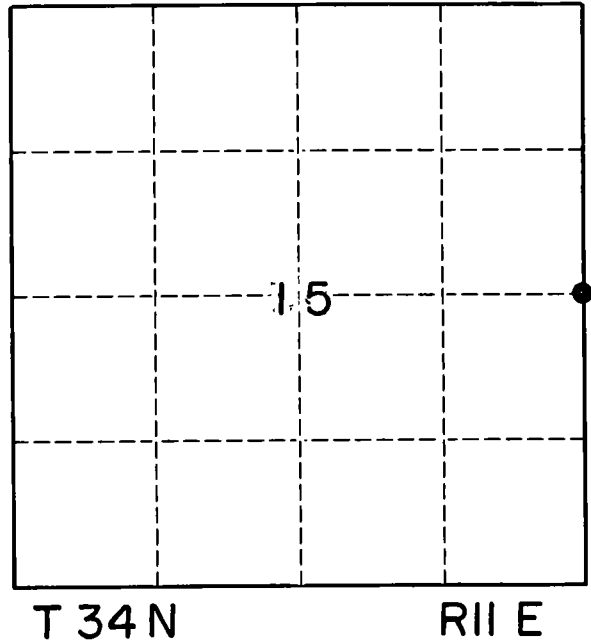
# U. S. PUBLIC LAND SURVEY MONUMENT RECORD

**INSTRUCTIONS:**

This record shall show the location of the corner and shall include all of the following nine elements (a through i).

- (a) Identify the corner by reference to the U.S. public land survey system.  
 O = Corner monument restored.

This corner was originally set by William E. Daugherty and was perpetuated by Robert J. Poss in 1968.

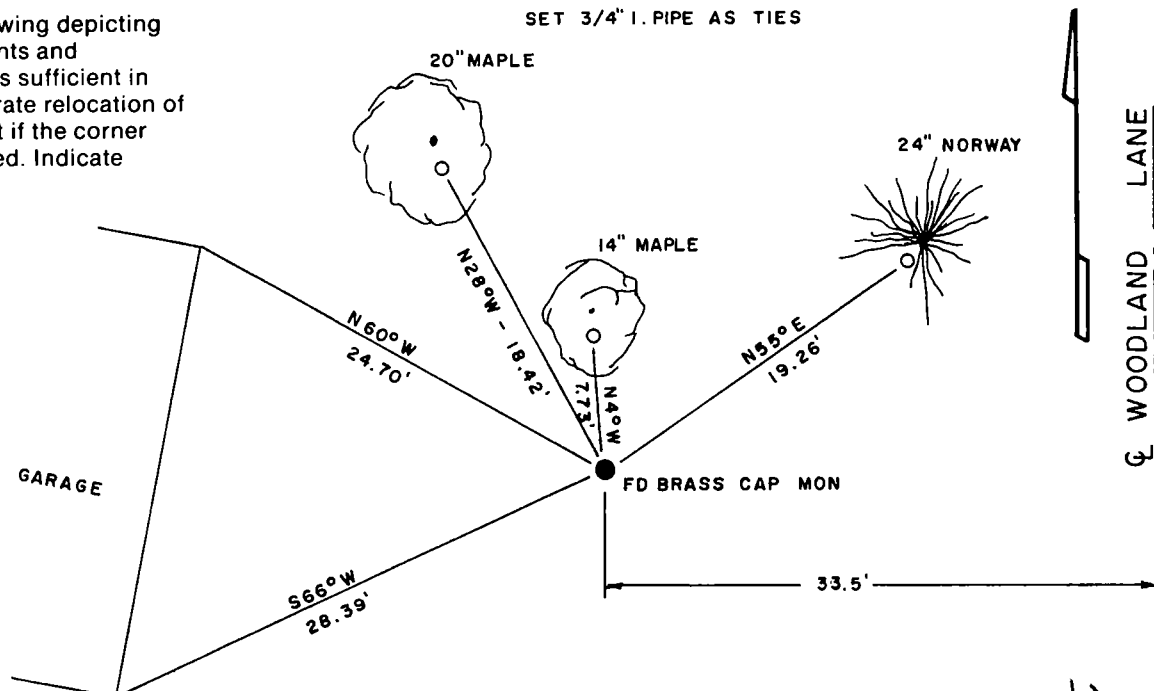


- (b) Describe any record evidence, monument evidence, occupational evidence, testimonial evidence or any other material evidence you considered, and whether the monument was found or placed.

We re-tied this corner to perpetuate its location and to make it easier to locate for future users. This garage is believed to be located on Lot 16 Burton's Woods @ N11300 Woodland Lane.

- (c) In the plan view drawing below, provide reference ties to at least 4 witness monuments, or, if the location is within a municipality, to at least 2 witness monuments. (Witness monuments shall be made of concrete, natural stone, iron or other equally durable material.)  
 Describe witness monuments

- (d) Show a plan view drawing depicting the relevant monuments and reference ties which is sufficient in detail to enable accurate relocation of the corner monument if the corner monument is disturbed. Indicate north.



117

Describe any material discrepancy between the location of the corner as restored or reestablished and the location of that corner as previously restored or reestablished by distance and direction. Show the discrepancy on the plan view drawing under (d), above. Show the distances between the corner as previously restored or reestablished and (1) the corner as restored or reestablished, and (2) to at least 2 of the witness monuments shown on the drawing in (d), above.

N/A

(f) Was the corner restored through acceptance of (1) an obliterated evidence location, or, (2) a found perpetuated location.?

2)

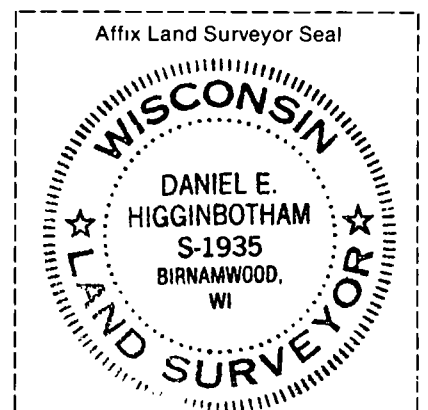
(g & h) Was the corner reestablished through lost corner proportionate methods? If so, show the method, including the directions and distances to other public land survey corners used as evidence or used for proportioning in determining the corner location.

(i) I, DAN HIGGINBOTHAM  
(type or print name)

certify that the corner location shown on this record was determined by me or under my direction and control and that this U.S. Public Land Survey Monument Record is correct and complete to the best of my knowledge and belief.

*Dan Higginbotham*  
Signature

1-10-95  
Date



CERTIFIED LAND CORNER RESTORATION

34-11

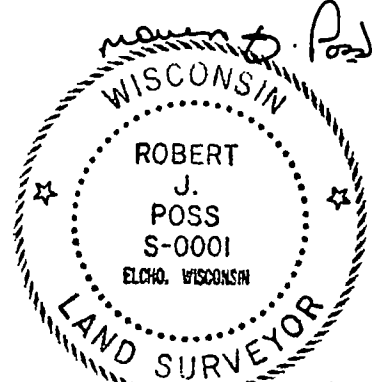
Index No. L-17

State of Wisconsin }  
 County of Langlade } ss.

I, Robert J. Poss, do hereby certify that on the 18<sup>th</sup> day of May, 1968, I found evidence of the 1/4 corner of between Sections 14 & 15 Township 34, North, Range 11 East, Fourth, Principal Meridian, as described hereon; and that from this evidence I established a new monument and accessories as described hereon to perpetuate the original location of this corner.

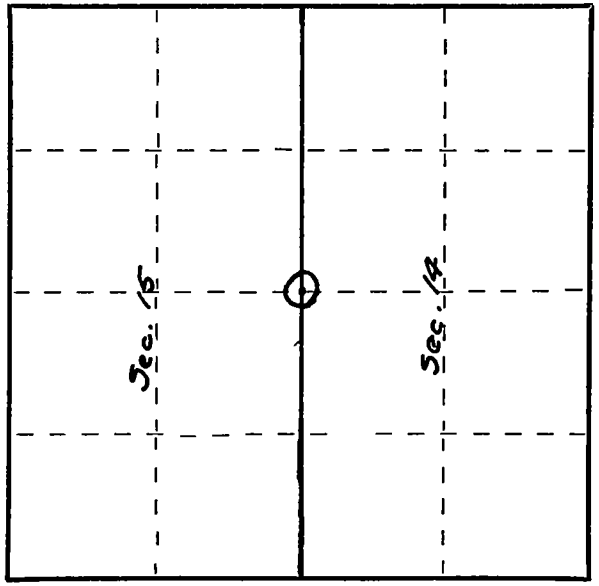
Resident witnesses:  
 \_\_\_\_\_  
 \_\_\_\_\_  
 \_\_\_\_\_

History of original corner establishment:  
 ORIG ASPEN, 10, S60 E 14 & ASPEN 10 S65W 39  
 BROOKS FEB 7-10 1901 COULDN'T FIND COR. SET COR MARKED NEW BT NORWAY, 12, N 75 1/2 E, 33 1/4 (2195')  
 LOOKS LIKE POSS FOUND BROOKS' CORNER & NORWAY BT  
 D. Twenty 6/94

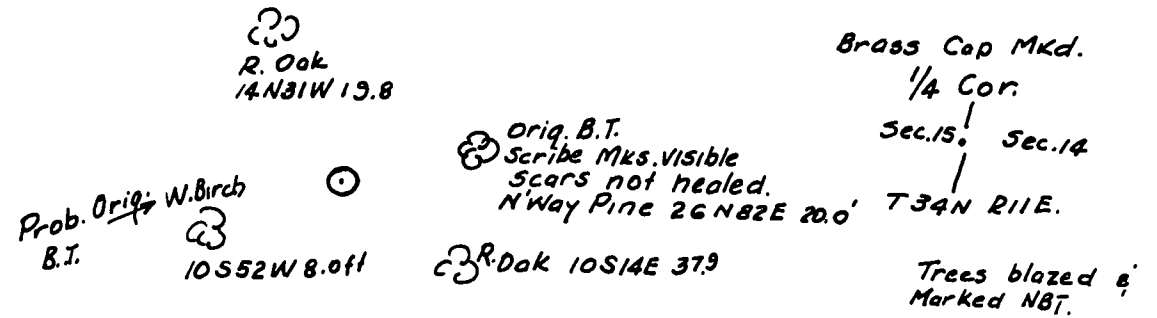


Description of corner evidence found:  
Found Stake wired to an Iron pipe. Stake badly rotted. Mr. Roy Burton identified pipe as placed by him to preserve the corner location. Found two B.Ts.

Description of monument and accessories I established to perpetuate the original location of this corner.



○ = Corner monument restored.



Dated at ELCHO, Wis., this 18<sup>th</sup> day of May, 1968.

Signature Robert J. Poss Title Reg. Land Surveyor Registration No. 5-1  
 (County Surveyor, Registered Land Surveyor, or other duly authorized official)

Office of Register of Deeds, County of \_\_\_\_\_, I hereby certify that the within instrument was filed in this office for record on the \_\_\_\_\_ day of \_\_\_\_\_, 19\_\_\_\_ at \_\_\_\_\_ o'clock \_\_\_\_\_ M.

\_\_\_\_\_  
 (Register of Deeds)  
 By \_\_\_\_\_ Deputy

FORM 985 H. C. MILLER CO., MILWAUKEE