

4341150020

# U.S. PUBLIC LAND SURVEY MONUMENT RECORD

(Prepared and as required by S. A-E 7.08 Wi Administrative Code)

The North  $\frac{1}{4}$  corner of Section 22, T. 34N., R11E., Langlade County, WI

**Corner was: (check all that apply)**

- Restored through acceptance of an obliterated evidence location.
- Restored through acceptance of a found perpetuated location.
- Determined to be lost and reestablished through proportionate methods.  
(Show bearings and distances to PLSS corners used for proportioning)
- Restored/recovered/reestablished in a location that differs from a previously established position. (Show difference in plan view below.)
- Check here if additional information is shown on the reverse side of this form.

**Describe record evidence, recovered physical evidence, occupational evidence, testimonial evidence and all other evidence considered in the recovery/restoration of corner.**

Corner was originally set by W. Daugherty, 1859.  
Original BT's Tamarack, 6" N58°W, 362 links; Tamarack 6", S49°W, 267 links

In 1960, F.R. Wincentsen Surveyed Section 22. His Map did not indicate any corner found or set. His map showed the North  $\frac{1}{4}$  Corner proportioned between the NW corner and the Meander Corner on the East shore of Lower Post Lake, at a distance of 2810.08' from the NW Corner.

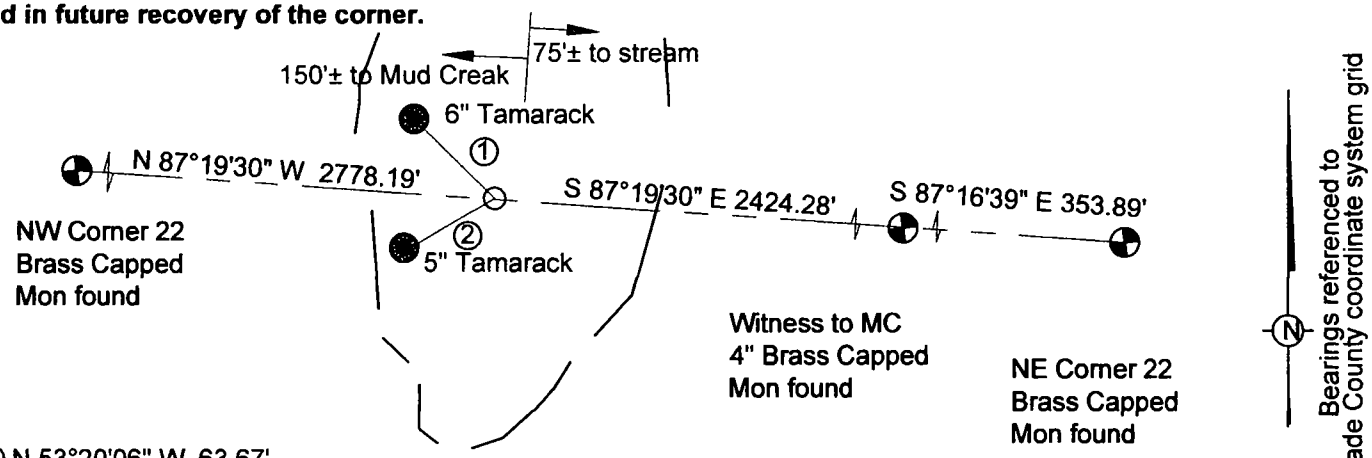
In 1985, WF Kelly Surveyed Section 15. His map did not indicate any corner found or set. showed the S  $\frac{1}{4}$  at midpoint between Section Corners, 2779.58' from each.

In 2006, I set the N $\frac{1}{4}$  at proportionate distance from the NW Corner of Section 22 and the Meander Corner to Section 15/22 on the East shore of Lower Post Lake. The corner falls on a marshy island near Mud Creek and Lower Post Lake

**Physical description of the monument set:**

I set a 1.315"X72" iron pipe and tied as indicated below.

**Describe the accessories used to perpetuate the location of the corner. Include a plan view drawing and indicate accessories found/set. Describe measuring point on bearing trees. Show any topographic features that would aid in future recovery of the corner.**



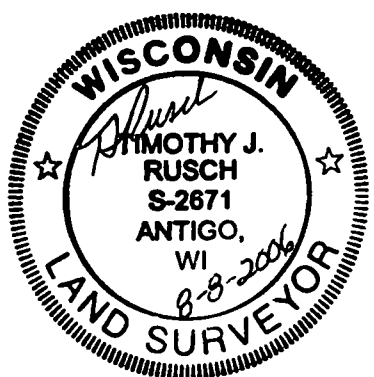
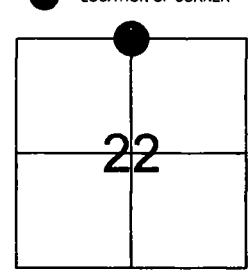
- ① N 53°20'06" W 63.67'
- ② S 89°08'41" W 46.72'

Bt's are blazed and marked with aluminum Bt tag. Distances measured to aluminum nail on right side base of tree.

NOT TO ANY SCALE

SURVEYOR'S SEAL

The North 1/4 corner of Section 22 T. 34 N., R. 11 E. Langlade County, WI



I, Timothy J. Rusch RLS 2671, certify that the corner location shown on this record was determined by me or under my direction and control and that this U.S. Public Land Survey Record is correct and complete to the best of my knowledge and belief.

Signature: *T. Rusch* Date: 8-8-2006

INDEX NO. N 15 34-11