

CERTIFIED LAND CORNER RESTORATION

Index No. L-20

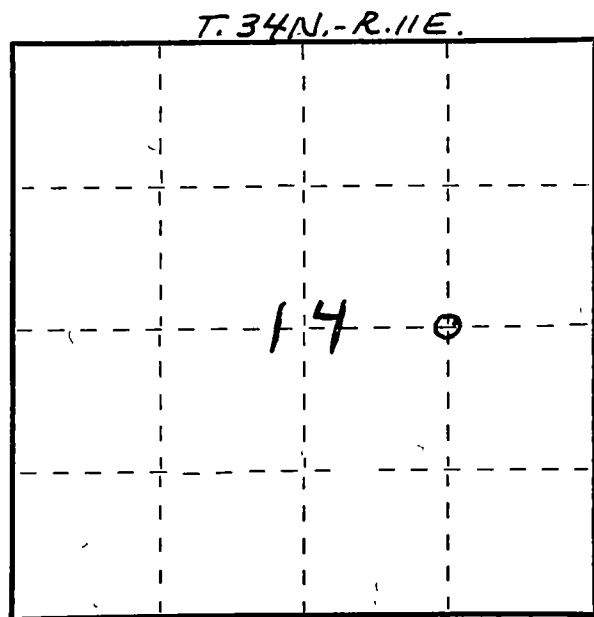
State of Wisconsin }  
County of LANGLADE } ss.

I WILLIAM F. KELLY, do hereby certify that on the 14TH day of JANUARY, 1976, I found evidence of the E 1/8 corner of SECTION 14 Township 34, North, Range 11 E., Fourth Principal Meridian, as described hereon; and that from this evidence I established a new monument and accessories as described hereon to perpetuate the original location of this corner.

Resident witnesses:

.....  
.....  
.....

FORM 985 H. C. MILLER CO., MILWAUKEE

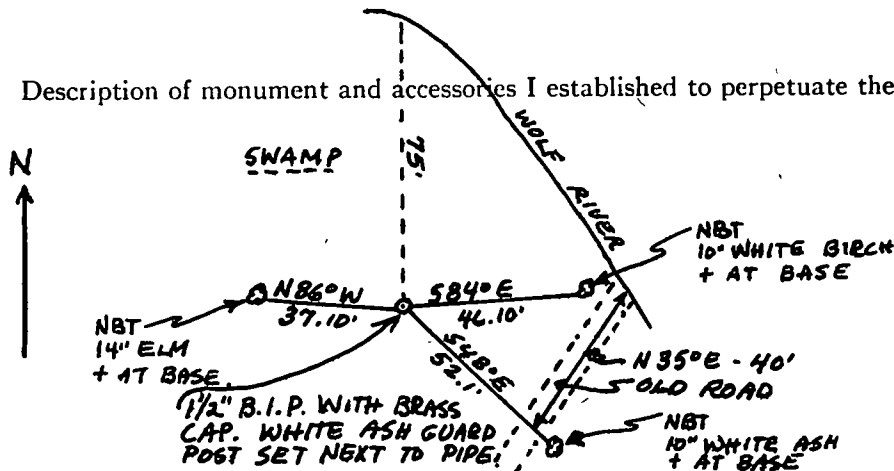


○ = Corner monument restored.

History of original corner establishment:  
See M. Hutchinson's Notes  
May 20, 1914

Description of corner evidence found:

Description of monument and accessories I established to perpetuate the original location of this corner.



Dated at ELCHO, Wis., this 14TH day of JANUARY, 1976.

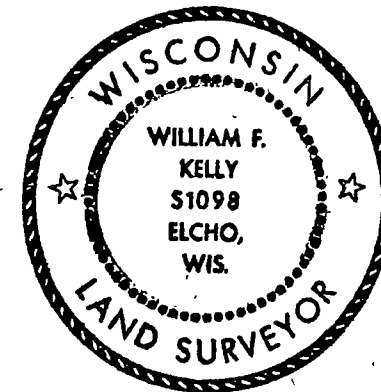
Signature William F. Kelly Title REGISTERED LAND SURVEYOR Registration No. 51098  
(County Surveyor, Registered Land Surveyor, or other duly authorized official)

Office of Register of Deeds, County of \_\_\_\_\_, I hereby certify that the within instrument was filed in this office for record on the \_\_\_\_\_ day of \_\_\_\_\_, 19\_\_\_\_ at \_\_\_\_\_ o'clock \_\_\_\_\_ M.

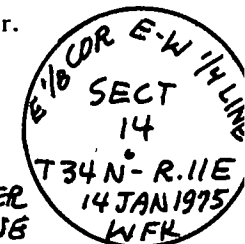
(Register of Deeds)

By \_\_\_\_\_ Deputy

*Cor SET wrong  
see Kelly's MAP OF SEC. 14*



*William F. Kelly*



SET E 1/8 CORNER ON E-W 1/4 LINE SECTION 14 T.34N. - R.11E. FROM CONTROL SURVEY OF SECTION 14. SET 1/2" B.I.P. WITH BRASS CAP MARKED: