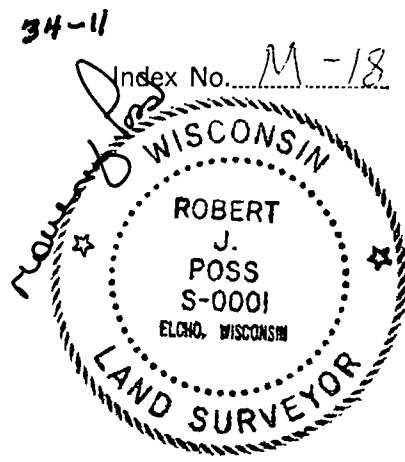


CERTIFIED LAND CORNER RESTORATION



State of Wisconsin }  
 County of LANGLADE } ss.

I, ROBERT J. POSS, do hereby certify that on the 15TH day of JUNE, 19 68, I found evidence of the SOUTHWEST 1/16 corner of SEC. 14 Township 34, North, Range R 11 EAST, Fourth, Principal Meridian, as described hereon; and that from this evidence I established a new monument and accessories as described hercon to perpetuate the original location of this corner.

History of original corner establishment:

Description of corner evidence found:

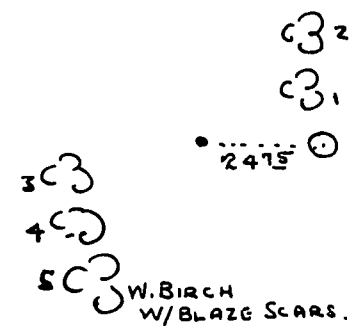
FOUND IRON PIN IN ROAD E

Resident witnesses:

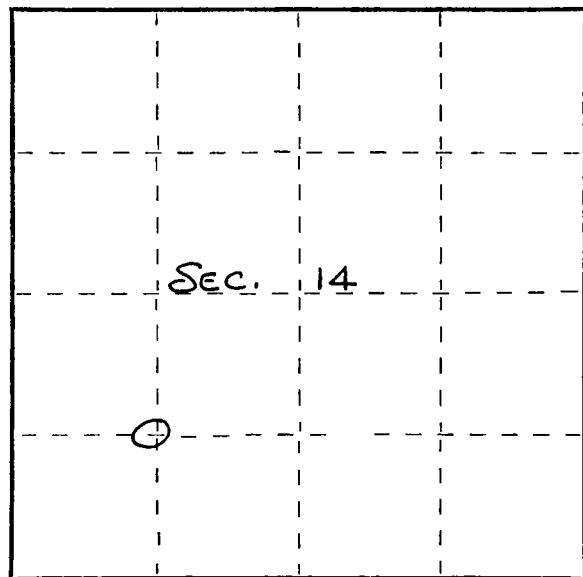
.....  
 .....  
 .....

Description of monument and accessories I established to perpetuate the original location of this corner.

- FROM 1/16 COR.
- 1 = N. PINE 24 NBR E 22.1
  - 2 = W. PINE 24 N 52 1/4 E 28.7
  - 3 = OAK 12 S 73 W 35.9
  - 4 = W. PINE 10 S 42 1/4 W 44.2
  - 5 = W. BIRCH 16 S 27 W 67.0



- IRON PIN
  - 1 1/2" IRON PIPE
- FROM WIT. COR.
- 1 = N. PINE 24 N 34 1/4 W 4.3 MKD. WIT. COR.
  - 2 = W. PINE 24 N 2 1/4 W 16.8
  - 3 = OAK 12 S 81 1/2 W 60.3 SW 1/16 COR. SEC. 22
  - 4 = W. PINE 10 S 60 3/4 W 65.9
  - 5 = W. BIRCH 16 S 41 1/2 W 83.7 COR. 1/2 RDS W.



Dated at ELCHO, Wis., this 15TH day of JUNE, 19 68.

Signature Robert J. Poss Title REG. LAND SURVEYOR Registration No. S-1  
 (County Surveyor, Registered Land Surveyor, or other duly authorized official)

Office of Register of Deeds, County of....., I hereby certify that the within instrument was filed in this office for record on the..... day of....., 19..... at..... o'clock..... M.

.....  
 (Register of Deeds)

By..... Deputy

○ = Corner monument restored.

FORM 985 H. C. MILLER CO., MILWAUKEE