

4341113 2020

U.S. PUBLIC LAND SURVEY MONUMENT RECORD

(Prepared and as required by S. A-E 7.08 WI Administrative Code)

The CENTER 1/4 corner of Section 13 T. 34 N., R. 11 E., Langlade County, WI
 Corner was (check all that apply)

- Restored through acceptance of an obliterated evidence location.
- Restored through acceptance of a found perpetuated location.
- Determined to be lost and re-established through proportionate methods. (show bearings and distances to PLSS corners used for proportioning.)
- Restored/recovered/re-established in a location that differs from a previously established position. (Show difference in plan view below.)
- Check here if additional information is shown on the reverse side of this form.

Describe record evidence, recovered physical evidence, occupational evidence, testimonial evidence, and all other evidence considered in the recovery/restoration of the corner.

This corner was not set as part of the original GLO survey.

1963 - Sy. M. Poskie surveyed the Robert S. Lyle Scout Reservation (map #40456 of Langlade County Records). Poskie set a 2" iron pipe at the corner, but does not show a Section breakdown.

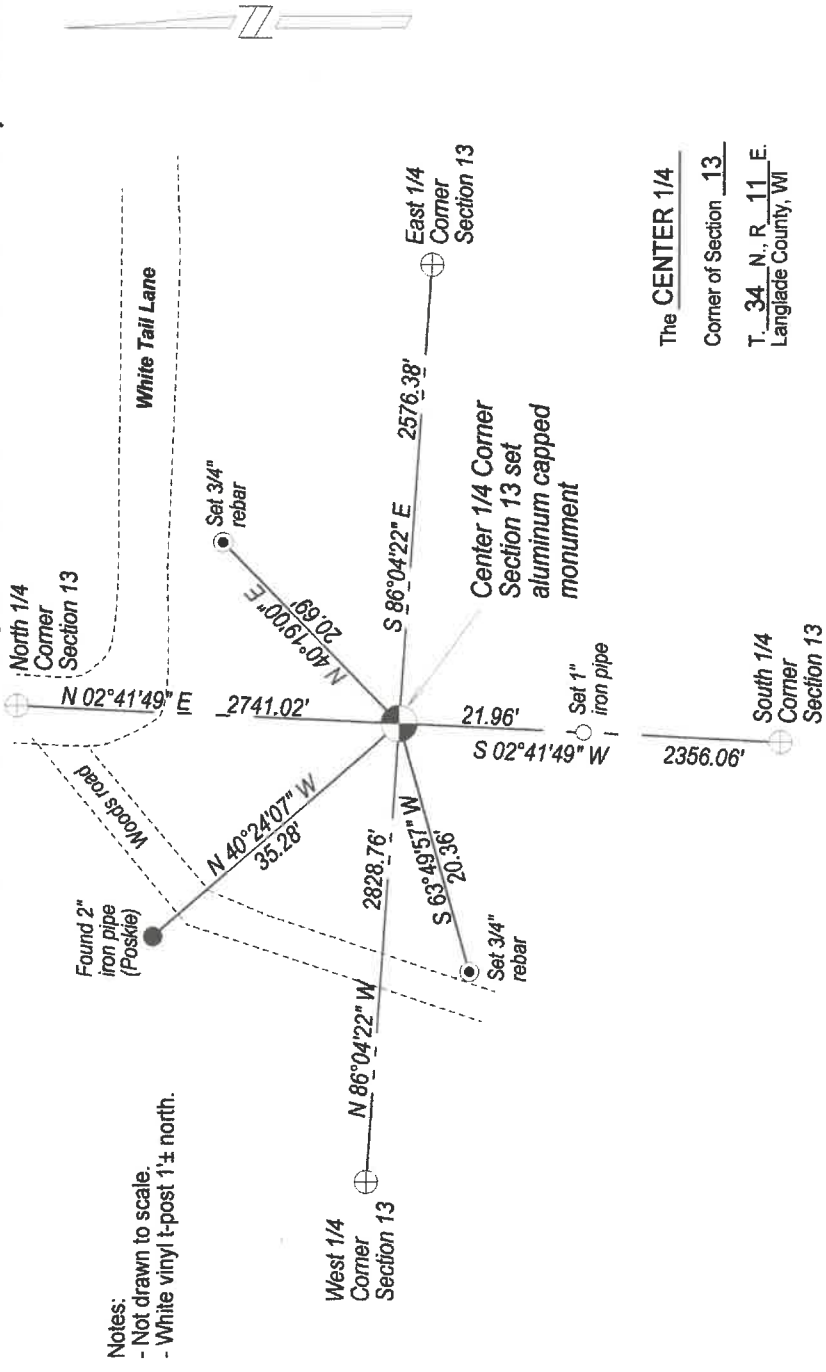
2003 - Eugene Uttech surveyed the SW1/4 SW1/4 (map #20283 of Langlade County Records) and set a 3/4" rebar at the intersection of the 1/4 lines for corner location.

2016 - I searched the area for Uttechs corner, but was unable to locate it. I set an aluminum capped monument at the intersection of the 1/4 lines and tied it out as follows. I accept this as the corner location.

Physical description of the monument set:

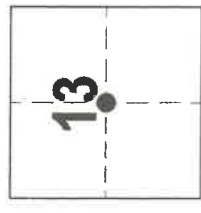
I set a bermtsen aluminum monument with a 2 1/2" aluminum cap at the corner location and tied it out as follows.

Describe the accessories used to perpetuate the location of the corner. Include a plan view drawing and indicate accessories found/set. Describe measuring point on bearing trees. Show any topographic features that would aid in future recovery of the corner.



- Notes:
- Not drawn to scale.
 - White vinyl t-post 1± north.

The CENTER 1/4
 Corner of Section 13
 T. 34 N., R. 11 E.
 Langlade County, WI



● = Location of corner

SURVEYORS SEAL



I, Timothy J. Rusch, certify that the corner location shown on this record was determined by me or under my direction and control and that this U.S. Public Land Survey Monument Record is correct and complete to the best of my knowledge and belief.

Timothy J. Rusch 07-21-2020
 Signature Date

CERTIFIED LAND CORNER RESTORATION

34-11

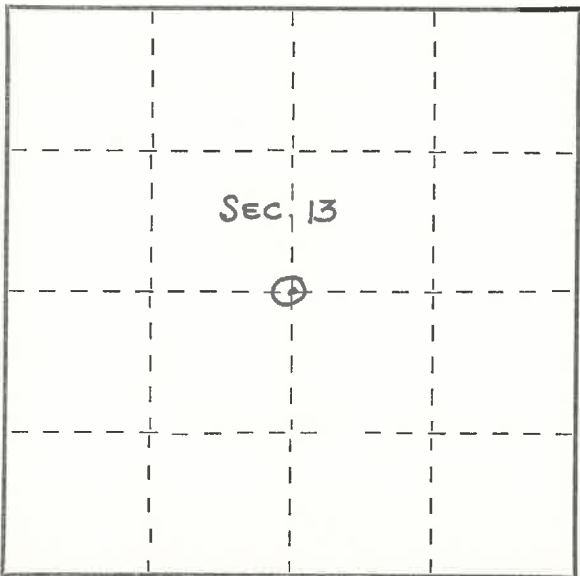
Index No. L-23

State of Wisconsin }
County of LANGLADE, } ss.

I ROBERT J. POSS, do hereby certify that on the 17th day of MAY, 1962, I found evidence of the CENTER SECTION corner of SECTION 13 Township 34, North, Range 11 EAST., Fourth, Principal Meridian, as described hereon; and that from this evidence I established a new monument and accessories as described hereon to perpetuate the original location of this corner.

Resident witnesses:

ED. MORRISSEY:



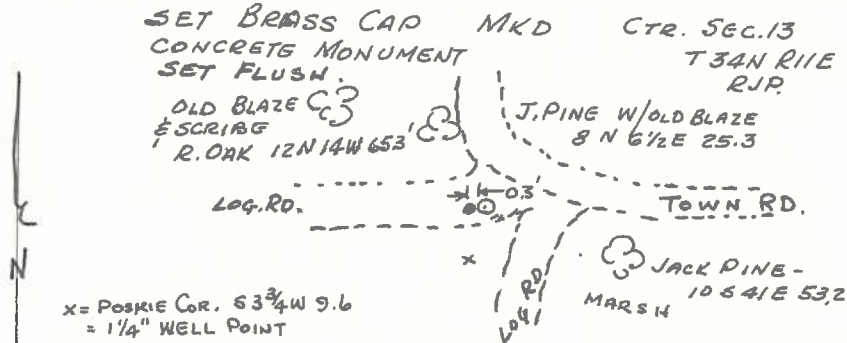
○ = Corner monument restored.

History of original corner establishment:

Description of corner evidence found:

2" IRON PIPE - NO DATA ON PREVIOUS SURVEYS.
FOUND 1 BT. BLAZED & SCRIBED - 1 BT W/BLAZE NO MK.
FOUND POSKIE'S "SCOUT LAND" SURVEY COR. DIDNOT USE AS
IT DOES NOT CONFORM TO BT'S.

Description of monument and accessories I established to perpetuate the original location of this corner.

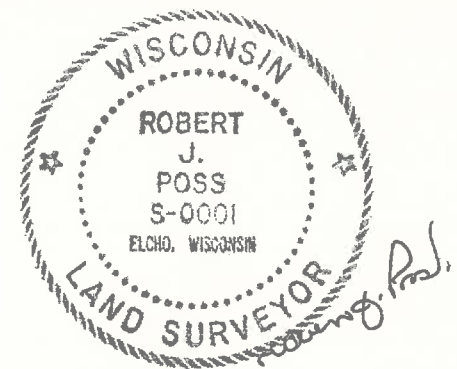


Dated at ELCHO, Wis., this 29th day of MAY, 1962.

Signature Robert J. Poss Title REG. LAND SURVEYOR Registration No. S-0001
(County Surveyor, Registered Land Surveyor, or other duly authorized official)

Office of Register of Deeds, County of _____, I hereby certify that the within instrument was filed in this office for record on the _____ day of _____, 19____ at _____ o'clock _____ M.

(Register of Deeds)
By _____ Deputy



FORM 985 H. C. MILLER CO., MILWAUKEE