

CERTIFIED LAND CORNER RESTORATION

Index No. N-22

State of Wisconsin }
County of LANGLADE } ss.

History of original corner establishment:
CORNER ESTABLISHED ON SURVEY BY SY M POSKIE - NOV. 19, 1963

34-11

I WILLIAM F. KELLY, do hereby certify that on the 6TH day of APRIL, 1976, I found evidence of the W 1/8 CORNER corner of SECTION 13 & 24 Township 34, North, Range 11E, Fourth Principal Meridian, as described hereon; and that from this evidence I established a new monument and accessories as described hereon to perpetuate the original location of this corner.

Description of corner evidence found:
FOUND 2" I.P. WITH SCRIBED WITNESS TREE.



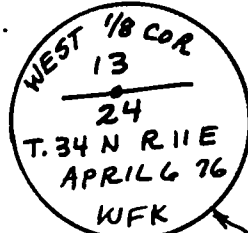
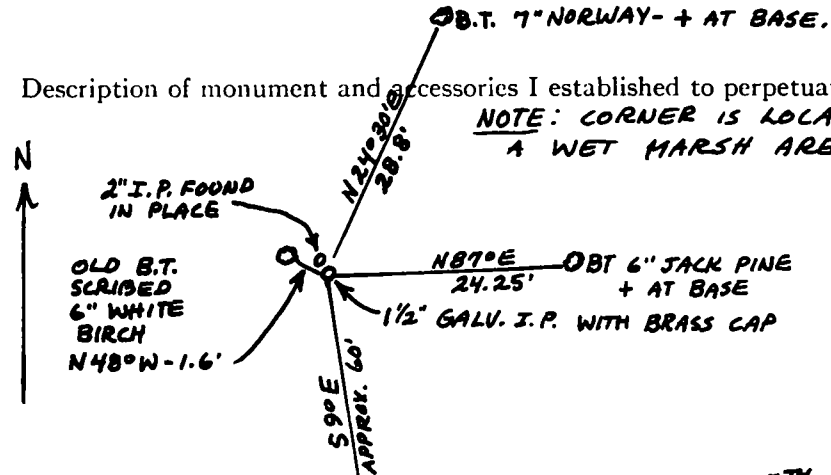
William F. Kelly
15 April 1976

Resident witnesses:

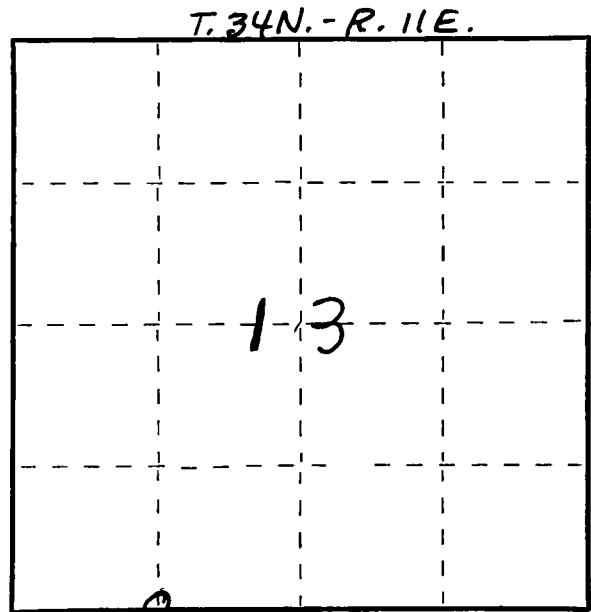
.....
.....
.....

Description of monument and accessories I established to perpetuate the original location of this corner.

NOTE: CORNER IS LOCATED IN A WET MARSH AREA.



SET 1 1/2" GALV. I.P. WITH BRASS CAP MARKED: RESET EXIST. 2" I.P. ADJACENT TO BRASS CAP PIPE AS A WITNESS. MARKED NEW BEARING TREES.



Dated at ELCHO, Wis., this 7TH day of APRIL, 1976

Signature William F. Kelly Title REGISTERED LAND SURVEYOR Registration No. 51098
(County Surveyor, Registered Land Surveyor, or other duly authorized official)

Office of Register of Deeds, County of....., I hereby certify that the within instrument was filed in this office for record on the.....day of....., 19..... at.....o'clock..... M.

(Register of Deeds)

By..... Deputy
6" WHITE PINE - OLD BLAZE MARK ON TRUNK

○ = Corner monument restored.