

CERTIFIED LAND CORNER RESTORATION

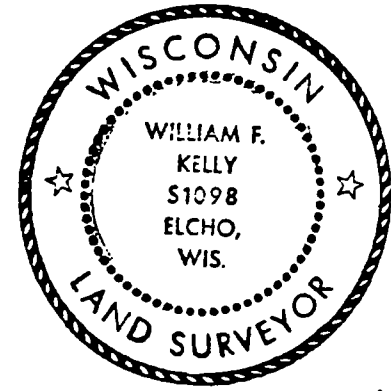
Index No. G-1
G-1 R. 11

State of Wisconsin }
County of LANGLADE } ss.

I, WILLIAM F. KELLY, do hereby certify that on the 9TH day of DECEMBER, 1975, I found evidence of the 1/4 SECTION corner of SECTIONS 12 & 7 Township 34, North, Range 10 E & 11 E, Fourth Principal Meridian, as described hereon; and that from this evidence I established a new monument and accessories as described hereon to perpetuate the original location of this corner.

Resident witnesses:
.....
.....
.....

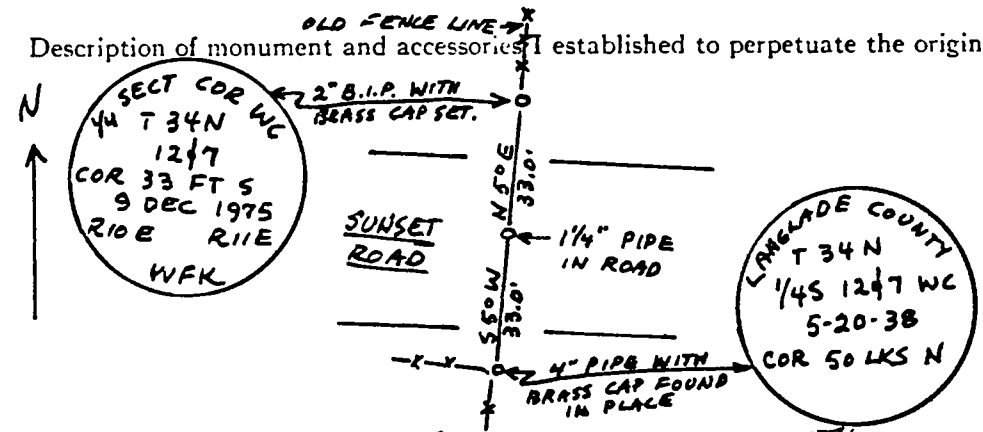
History of original corner establishment:



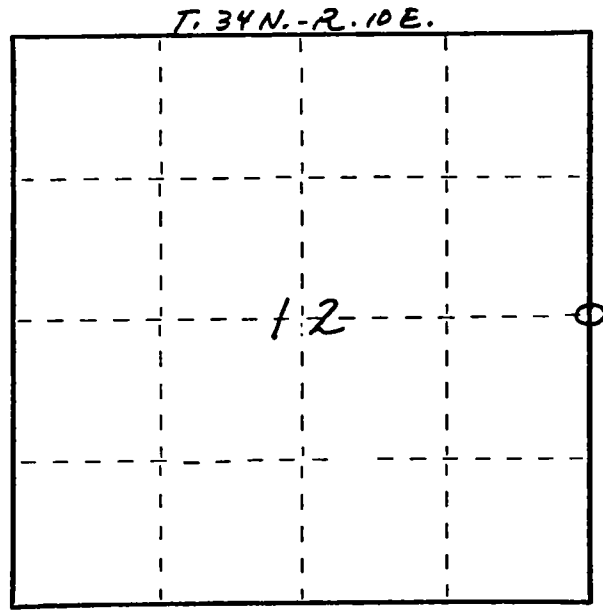
William F. Kelly

Description of corner evidence found:

Description of monument and accessories I established to perpetuate the original location of this corner.



FORM 985 M. C. MILLER CO., MILWAUKEE



○ = Corner monument restored.

Dated at ELCHO, Wis., this 9TH day of DECEMBER, 1975.

Signature William F. Kelly Title REGISTERED LAND SURVEYOR Registration No. S1098
(County Surveyor, Registered Land Surveyor, or other duly authorized official)

Office of Register of Deeds, County of, I hereby certify that the within instrument was filed in this office for record on the day of, 19..... at o'clock M.

.....
(Register of Deeds)

By Deputy