

CERTIFIED LAND CORNER RESTORATION

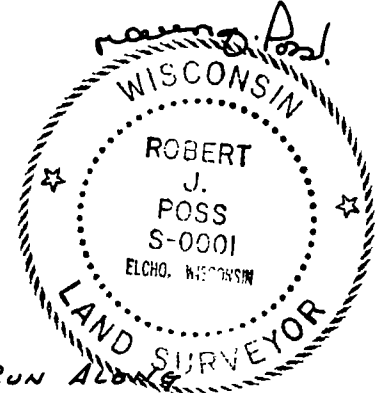
34-11  
Index No. tl-25-

State of Wisconsin }  
County of LANGLADE } ss.

I, ROBERT J. POSS, do hereby certify that on the 29<sup>TH</sup> day of MAY, 19 70, I found evidence of the S 1/16 COR. corner of SECS. 12 & 7 Township 34, North, Ranges 11 & 12 EAST, Fourth, Principal Meridian, as described hereon; and that from this evidence I established a new monument and accessories as described hereon to perpetuate the original location of this corner.

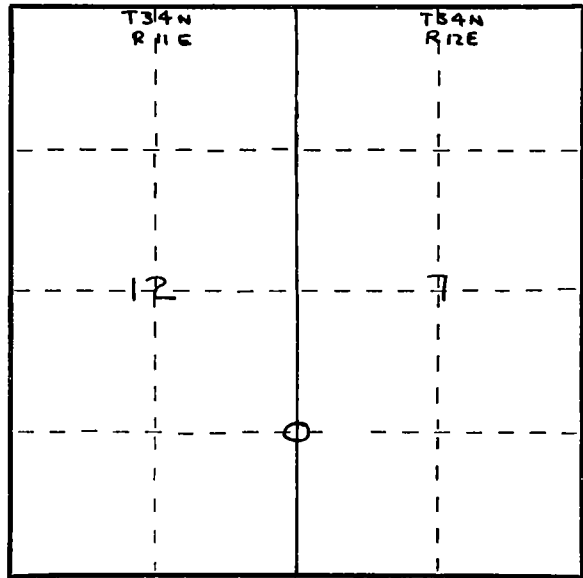
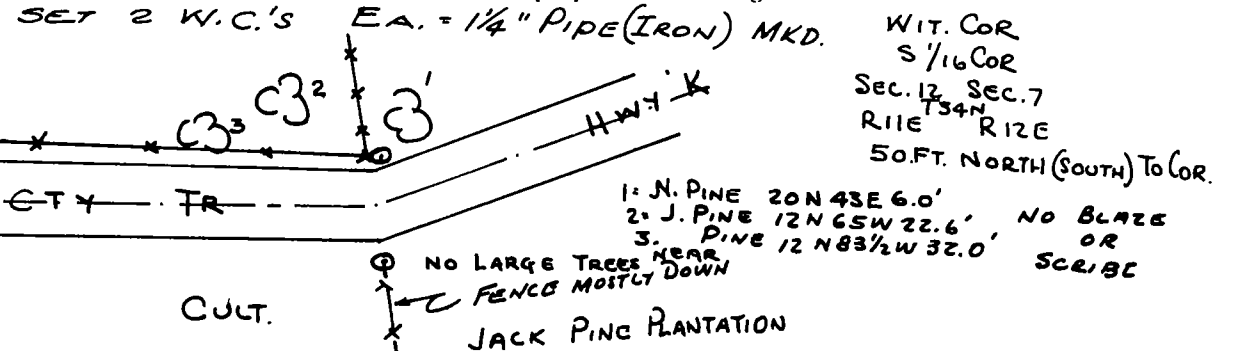
Resident witnesses:  
.....  
.....  
.....

History of original corner establishment:  
ESTABLISHED BY BORTH IN 1932-34 SURVEY OF COUNTY FOREST.



Description of corner evidence found:  
FROM SECTION COR. SET PREVIOUSLY (SEE COR 12-13-7-18) RUN ALONG OLD FENCE LINE MENTIONED BY BORTH. (FENCE IS MOSTLY DOWN BUT IDENTIFIABLE, CONTAINED FROM SEC. COR. 1334.6 (VS. BORTH 1334.0) TO E CTY TR. HWY 'K'

Description of monument and accessories I established to perpetuate the original location of this corner.



○ = Corner monument restored.

Dated at ELCHO, Wis., this 29<sup>TH</sup> day of MAY, 19 70.

Signature Robert J. Poss Title REG. LAND SURVEYOR Registration No. S-0001  
(County Surveyor, Registered Land Surveyor, or other duly authorized official)

Office of Register of Deeds, County of \_\_\_\_\_, I hereby certify that the within instrument was filed in this office for record on the \_\_\_\_\_ day of \_\_\_\_\_, 19 \_\_\_\_\_ at \_\_\_\_\_ o'clock \_\_\_\_\_ M.

(Register of Deeds)

By \_\_\_\_\_ Deputy