



CERTIFIED LAND CORNER RESTORATION

34-11

Index No. G-19

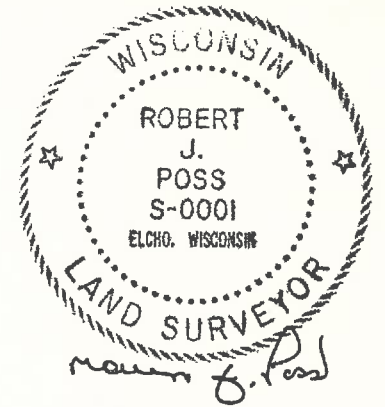
State of Wisconsin }  
County of Lanlade } ss.

History of original corner establishment:

I, Robert J. Poss, do hereby certify that on the 20<sup>th</sup> day of May, 1968, I found evidence of the center section corner of Section 11, Township 34, North, Range 11 East, Fourth, Principal Meridian, as described hereon; and that from this evidence I established a new monument and accessories as described hereon to perpetuate the original location of this corner.

Description of corner evidence found:

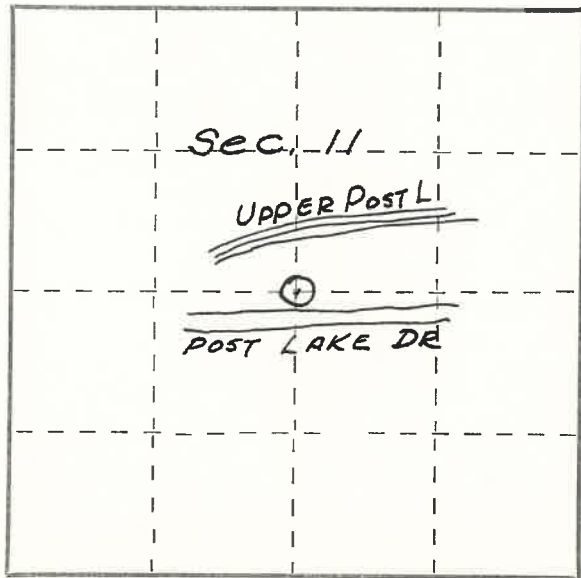
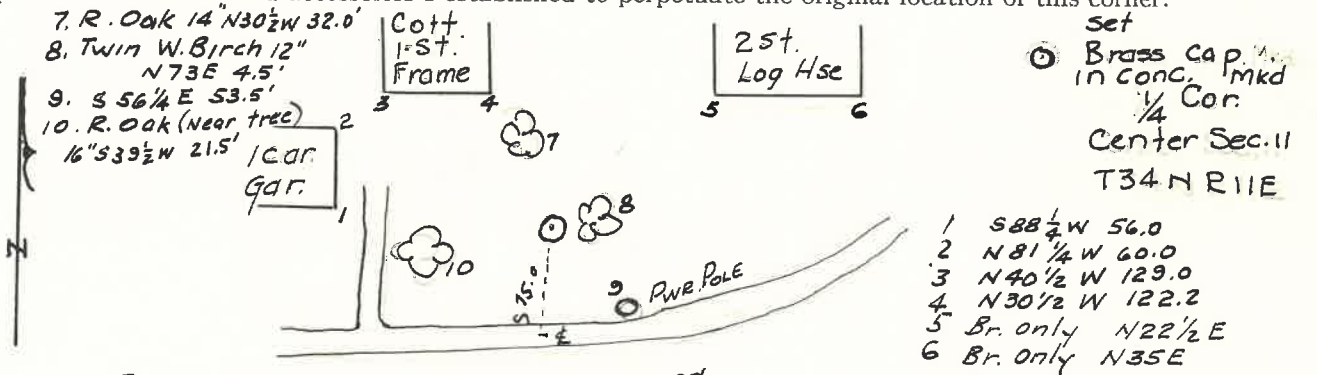
Found 2" Galv. Pipe with cap;  
marked Ctr. Sec. 11 - 1/4 Cor. \$250 fine for disturb.



Resident witnesses:

.....  
.....  
.....

Description of monument and accessories I established to perpetuate the original location of this corner.



○ = Corner monument restored.

Dated at ELCHO, Wis., this 22<sup>nd</sup> day of May, 1968.

Signature Robert J. Poss Title Reg. Land Surveyor Registration No. 5-1  
(County Surveyor, Registered Land Surveyor, or other duly authorized official)

Office of Register of Deeds, County of \_\_\_\_\_, I hereby certify that the within instrument was filed in this office for record on the \_\_\_\_\_ day of \_\_\_\_\_, 19\_\_\_\_ at \_\_\_\_\_ o'clock \_\_\_\_\_ M.

(Register of Deeds)

By \_\_\_\_\_ Deputy