

4341111 2000 2022

LANGLADE COUNTY U.S. PUBLIC LAND CORNER RESTORATION

The East 1/4 corner of Section 11, T. 34 N., R. 11 E., Langlade County, WI.

4341111 2000

Corner was: (check all that apply)

- Restored through acceptance of an obliterated evidence location.
- Restored through acceptance of a found perpetuated location.
- Determined to be lost and re-established through proportionate methods.
- Show bearings and distances to PLSS corners used for proportioning, and show original distances).
- Restored/recovered/re-established in a location that differs from a previously established position.
- (Show difference in plan view below).
- Check here if additional information is shown on the reverse side of this form.

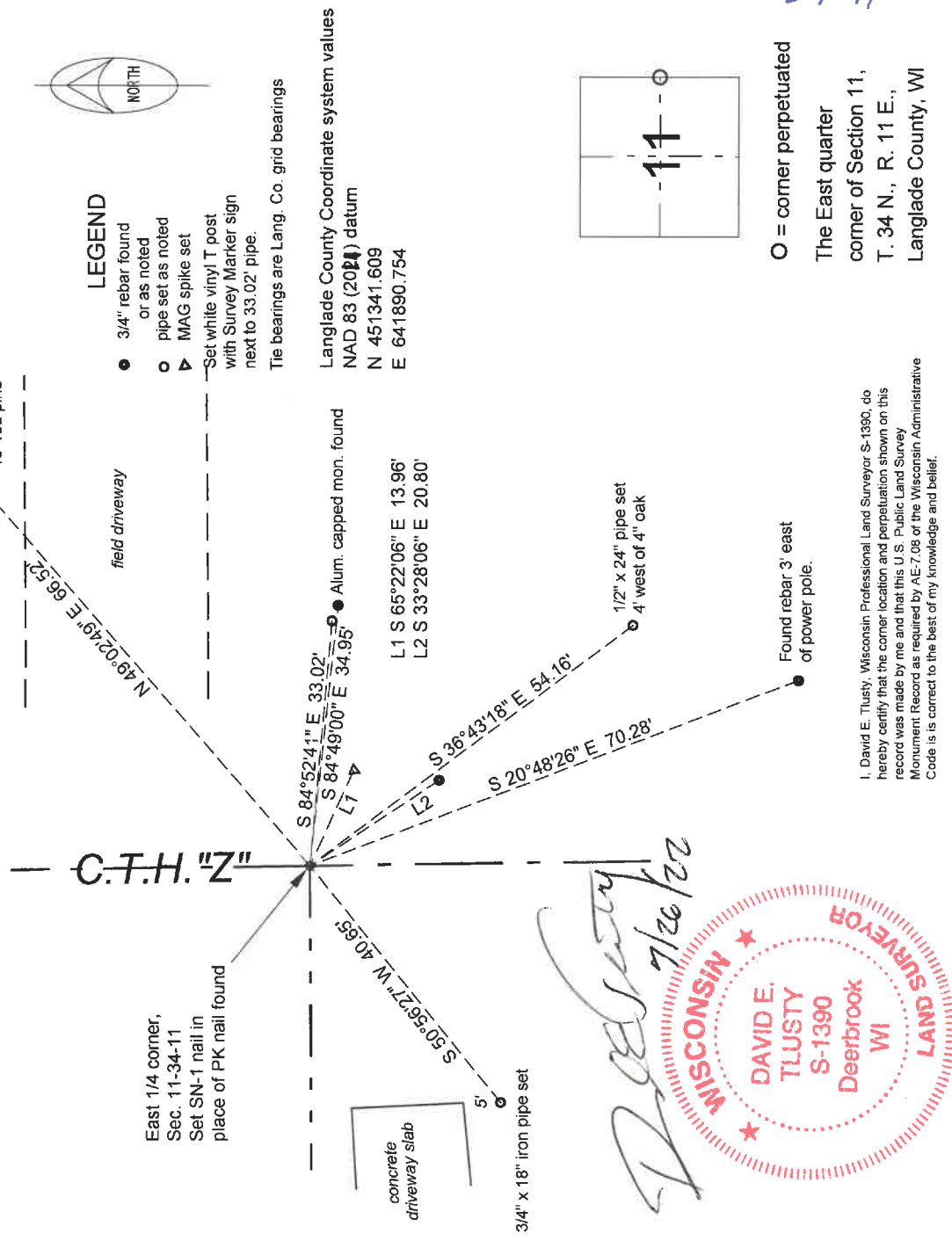
1859, Original Government Survey by William E. Daugherty; marked two pine BT's.

As mentioned on my 2009 U.S. Public Land corner restoration form for this corner, former surveyor Kelly found a RR spike under the pavement and set a PK nail over the RR spike and added ties. In 2008, I found a PK nail in the pavement and accepted it as the corner as distances from it to corners to the North and South worked well with previous record distances. 7/22/22 I need this corner for a survey and found that a previous witness monument to the SW is missing. I set new witness SW, remeasured all ties as shown (now on County grid bearings) and replaced the existing PK nail with a Berntsen SN-1 survey spike. Using RTK GPS equipment, I observed the Langlade County coordinates shown below.

Physical description of the monument set:

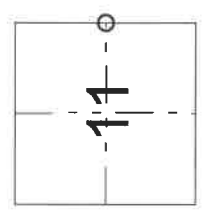
I set a Berntsen SN-1 nail in place of PK nail found.

Describe the accessories used to perpetuate the corner. Include a plan view drawing and accessories found/set. Describe measuring point on bearing trees. Show any topographic features that would aid in future recovery of the corner.



- LEGEND**
- 3/4" rebar found or as noted
 - pipe set as noted
 - ▶ MAG spike set
- Set white vinyl T post with Survey Marker sign next to 33.02' pipe.
Tie bearings are Lang. Co. grid bearings

Langlade County Coordinate system values
 NAD 83 (2011) datum
 N 451341.609
 E 641890.754



O = corner perpetuated
 The East quarter
 corner of Section 11,
 T. 34 N., R. 11 E.,
 Langlade County, WI

G21 34-11

David E. Tlusty
 7/26/22



I, David E. Tlusty, Wisconsin Professional Land Surveyor S-1390, do hereby certify that the corner location and perpetuation shown on this record was made by me and that this U.S. Public Land Survey Monument Record as required by AE-7.08 of the Wisconsin Administrative Code is correct to the best of my knowledge and belief.

LANGLADE COUNTY U.S. PUBLIC LAND CORNER RESTORATION

The East 1/4 corner of Section 11, T. 34 N., R. 11 E., Langlade County, WI.

Corner was: (check all that apply)

4341111 2000

- Restored through acceptance of an obliterated evidence location.
- Restored through acceptance of a found perpetuated location.
- Determined to be lost and re-established through proportionate methods.
- Show bearings and distances to PLSS corners used for proportioning, and show original distances).
- Restored/recovered/re-established in a location that differs from a previously established position.
- (Show difference in plan view below).
- Check here if addition information is shown on the reverse side of this form.

Describe record evidence, recovered physical evidence, occupational evidence, testimonial evidence and all other evidence considered in the recovery/restoration of the corner.

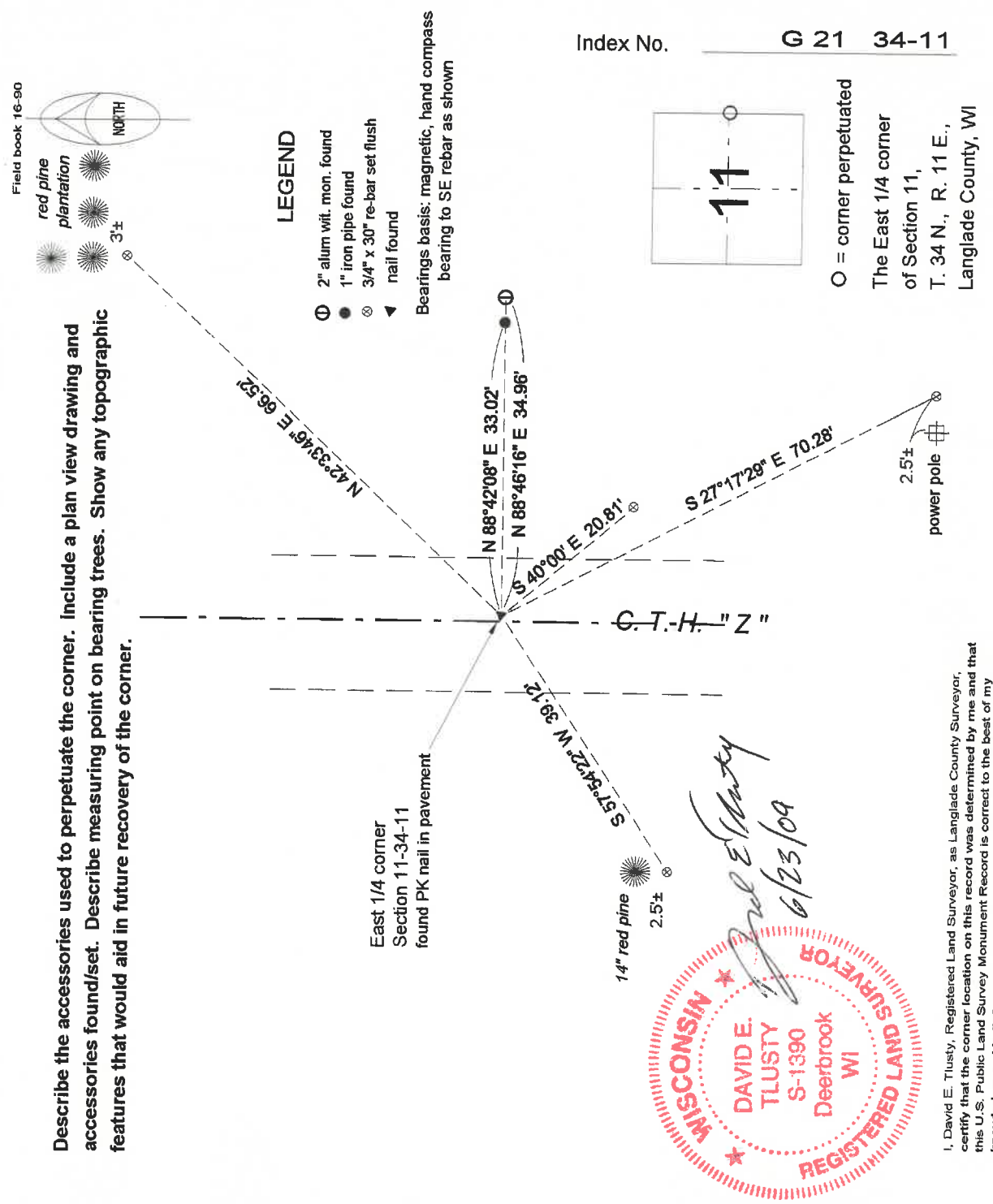
The original corner was established in 1859 by William E. Daugherty. Original bearing trees: yellow pine, 10", S87E, 28 links and a black pine, 10", S63W, 33 links. In 1914, Hutchinson (FB122-63) ran: "N bet 11 & 12. 41.94 1/4 post. Stone by Brooks. Stump OK. orig. BT marked some 20 years ago Y. pine, 12", S23W, 100.5 lks". In 1917, Hutchinson (FB122-28): from this corner to North measured 38.33 ch. In 1990, former surveyor Kelly: "I found R/R spike under blacktip surface. Set P. K. nail over R/R spike & set 3" al. witness monument East 35 ft." 07/14/08 D. Tlusty found PK in pavement, approx. 3' east of N-S centerline CTH "Z". Measured 64.41 to PK in power pole SE (Kelly had 64.45') and 35.0' to Alum. mon. east. Added ties as show below.

From this corner North, Hutchinson measured 2529.78'; CSM 14-67 shows distance as 2529.32'
From this corner South, Hutchinson measured 2768.04'; CSM 7-63 shows distance as 2773.27'.

Physical description of the monument set:

For the corner, I left the existing PK nail in place. Road is to be paved in the very near future.

Describe the accessories used to perpetuate the corner. Include a plan view drawing and accessories found/set. Describe measuring point on bearing trees. Show any topographic features that would aid in future recovery of the corner.



I, David E. Tlusty, Registered Land Surveyor, as Langlade County Surveyor certify that the corner location on this record was determined by me and that this U.S. Public Land Survey Monument Record is correct to the best of my knowledge and belief.

○ = corner perpetuated
The East 1/4 corner of Section 11, T. 34 N., R. 11 E., Langlade County, WI

U. S. PUBLIC LAND SURVEY MONUMENT RECORD

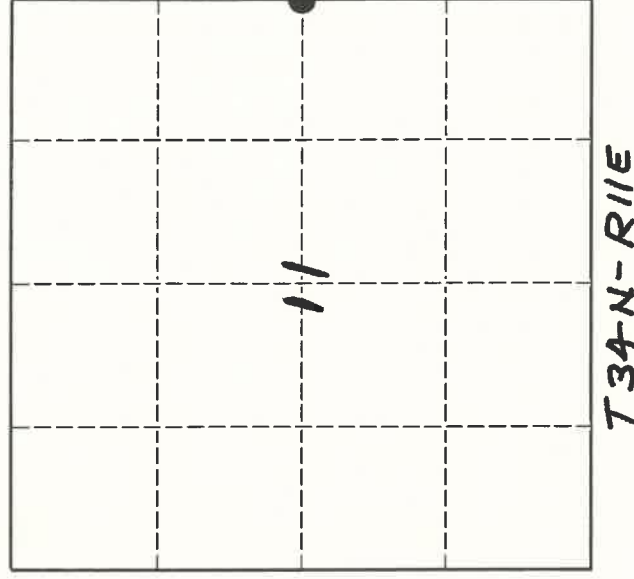
I N S T R U C T I O N S:

This record shall show the location of the corner and shall include all of the following nine elements (a through i).

- (a) Identify the corner by reference to the U. S. public land survey system.

O = Corner monument restored.

1859, W. DAUGHERTY EST. ORIG. COR.

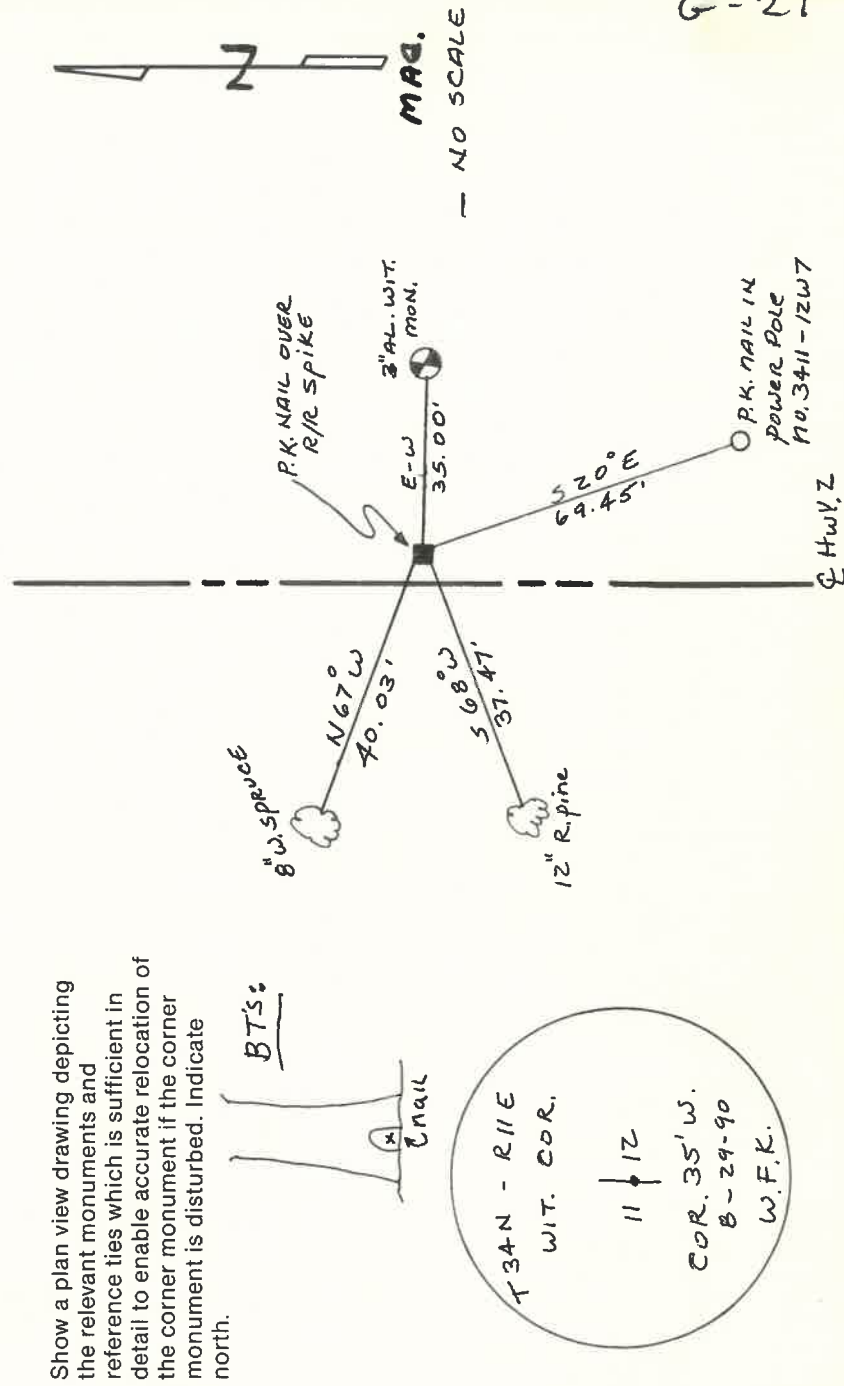


- (b) Describe any record evidence, monument evidence, occupational evidence, testimonial evidence or any other material evidence you considered, and whether the monument was found or placed.

AUGUST 29, 1990; I FOUND R/R SPIKE UNDER BLACK TOP SURFACE. SET P.K. NAIL OVER R/R SPIKE & SET 3" AL. WITNESS MONUMENT EAST 35 FT.

CORNER HAS BEEN ACCEPTED AND USED FOR DIVISION OF SMALL TRACTS IN SECTIONS 11 AND 12

- (c) In the plan view drawing below, provide reference ties to at least 4 witness monuments, or, if the location is within a municipality, to at least 2 witness monuments. (Witness monuments shall be made of concrete, natural stone, iron or other equally durable material.) Describe witness monuments.



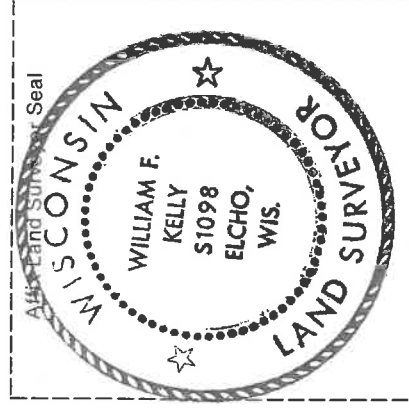
Describe any material discrepancy between the location of the corner as restored or reestablished and the location of that corner as previously restored or reestablished by distance and direction. Show the discrepancy on the plan view drawing under (d), above. Show the distances between the corner as previously restored or reestablished and (1) the corner as restored or reestablished, and (2) to at least 2 of the witness monuments shown on the drawing in (d), above.

NONE

(f) Was the corner restored through acceptance of (1) an obliterated evidence location, or, (2) a found perpetuated location.?

(2)

(g & h) Was the corner reestablished through lost corner proportionate methods? If so, show the method, including the directions and distances to other public land survey corners used as evidence or used for proportioning in determining the corner location. *NONE*



(i) I, WILLIAM F. KELLY
(type or print name)

certify that the corner location shown on this record was determined by me or under my direction and control and that this U.S. Public Land Survey Monument Record is correct and complete to the best of my knowledge and belief.

William F. Kelly
Signature

10-31-90
Date