

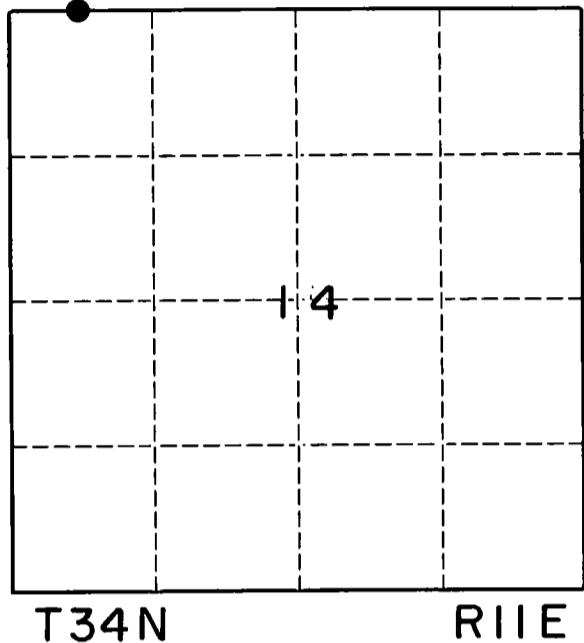
U. S. PUBLIC LAND SURVEY MONUMENT RECORD

INSTRUCTIONS.

This record shall show the location of the corner and shall include all of the following nine elements (a through i).

- (a) Identify the corner by reference to the U.S. public land survey system.
O = Corner monument restored.

This corner was originally set by William E. Daugherty and was perpetuated by Robert J. Poss in 1968.

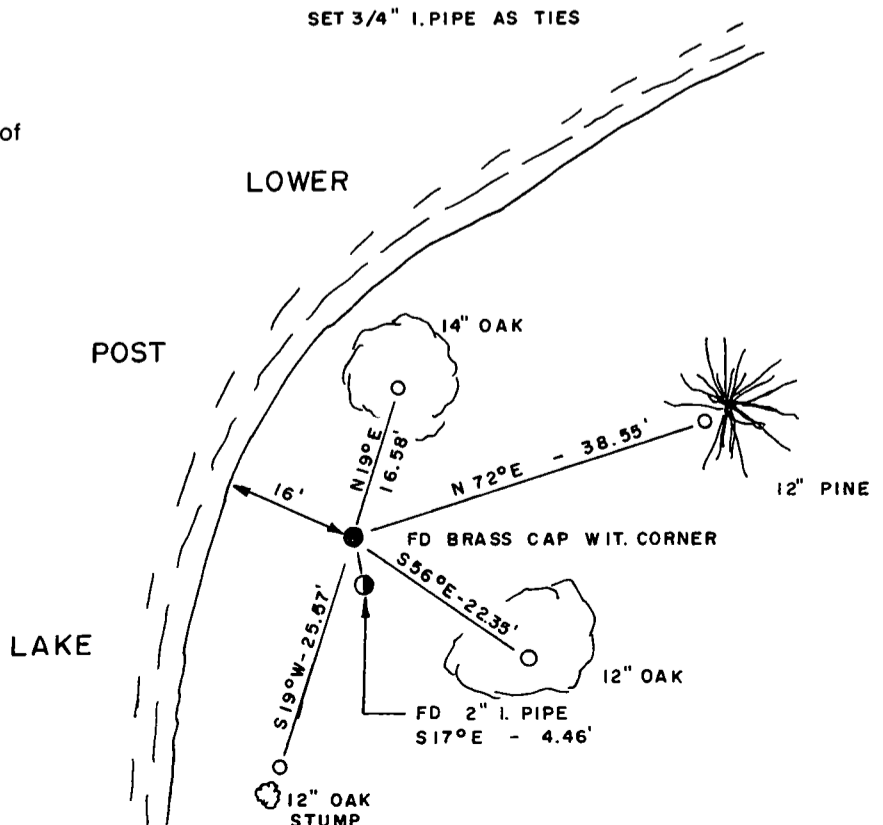


- (b) Describe any record evidence, monument evidence, occupational evidence, testimonial evidence or any other material evidence you considered, and whether the monument was found or placed.

We re-tied this corner to perpetuate its location and to make it easier to locate for future users. Note that this is a witness corner. Access to corner is obtained by driving westward on private road serving residents @ N11288 to N11298. Corner is WSW of road end near lake.

- (c) In the plan view drawing below, provide reference ties to at least 4 witness monuments, or, if the location is within a municipality, to at least 2 witness monuments. (Witness monuments shall be made of concrete, natural stone, iron or other equally durable material.) Describe witness monuments.

- (d) Show a plan view drawing depicting the relevant monuments and reference ties which is sufficient in detail to enable accurate relocation of the corner monument if the corner monument is disturbed. Indicate north.



J 17-18

Describe any material discrepancy between the location of the corner as restored or reestablished and the location of that corner as previously restored or reestablished by distance and direction. Show the discrepancy on the plan view drawing under (d), above. Show the distances between the corner as previously restored or reestablished and (1) the corner as restored or reestablished, and (2) to at least 2 of the witness monuments shown on the drawing in (d), above.

N/A

(f) Was the corner restored through acceptance of (1) an obliterated evidence location, or, (2) a found perpetuated location.?

2)

(g & h) Was the corner reestablished through lost corner proportionate methods? If so, show the method, including the directions and distances to other public land survey corners used as evidence or used for proportioning in determining the corner location.

(i) I, DAN HIGGINBOTHAM
(type or print name)

certify that the corner location shown on this record was determined by me or under my direction and control and that this U.S. Public Land Survey Monument Record is correct and complete to the best of my knowledge and belief.

Dan Higginbotham
Signature

1-10-95
Date



CERTIFIED LAND CORNER RESTORATION

34-11

Index No. J-17-18

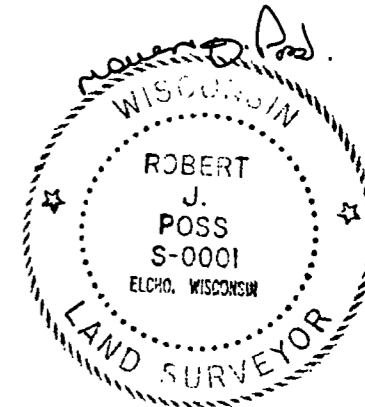
State of Wisconsin }
County of Langlade } ss.

I, Robert J. Poss, do hereby certify that on the 2nd day of May, 1968, I found evidence of the Witness Cor. to Meander corner of Secs. 11 & 14 Township 34, North, Range 11 East, Fourth, Principal Meridian, as described hereon; and that from this evidence I established a new monument and accessories as described hereon to perpetuate the original location of this corner.

Resident witnesses:
.....
.....
.....

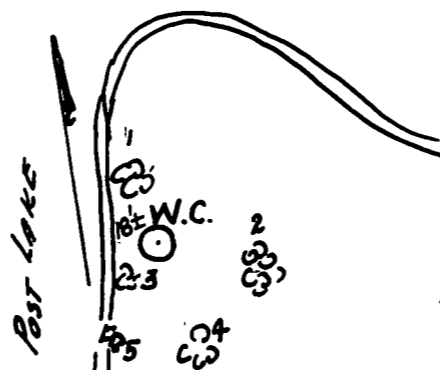
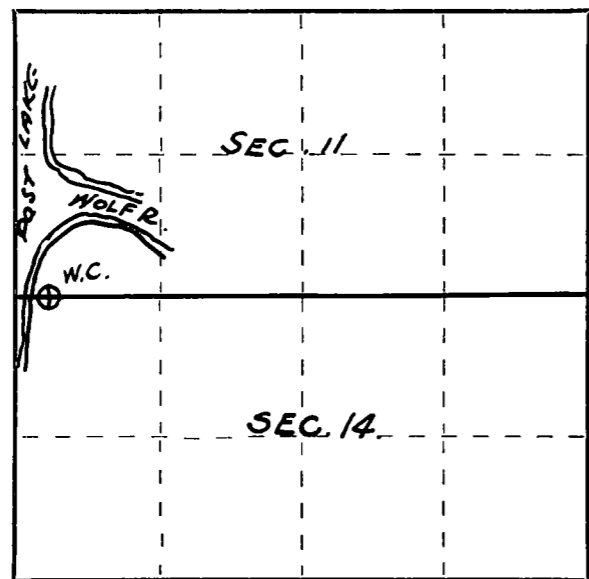
History of original corner establishment:

Description of corner evidence found:



Brass Cap
in concrete
MKd.
WIT. COR.
25' to cor
W.

Description of monument and accessories I established to perpetuate the original location of this corner.



- 1. Norway Pine 20" N 3 1/2 W 35.8' on lake shore.
- 2. Twin Oaks { 12 S 55 E 23.6'
 { 12 S 64 E 25.2'
- 3. Red Oak 20 S 59 W. 7.4'
- 4. Nor. Pine 20 S 14 W 48.3' With blazes to cor. Blazes completely healed. Plainly visible.
- 5. Pine stump S 44 W 48.0' Probably the stump referred in orig. survey notes as "only tree near."

Dated at Elcho, Wis., this 18th day of May, 1968.

Signature Robert J. Poss Title Reg. Land Surveyor Registration No. 5-1
(County Surveyor, Registered Land Surveyor, or other duly authorized official)

Office of Register of Deeds, County of _____, I hereby certify that the within instrument was filed in this office for record on the _____ day of _____, 19____ at _____ o'clock _____ M.

.....
(Register of Deeds)

By _____ Deputy

○ = Corner monument restored.

CERTIFIED LAND CORNER RESTORATION

34-11

Index No. J-17-18

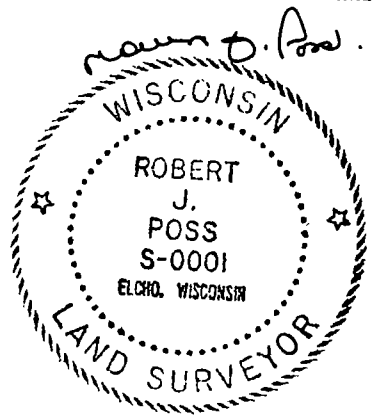
State of Wisconsin }
County of Lanola, } ss.

I, Robert J. Poss, do hereby certify that on the 18th day of May, 1968, I found evidence of the Meander Cor corner between Sections 11 & 14 Township 34, North, Range 11 East, Fourth, Principal Meridian, as described hereon; and that from this evidence I established a new monument and accessories as described hereon to perpetuate the original location of this corner.

Resident witnesses:
.....
.....
.....

History of original corner establishment:

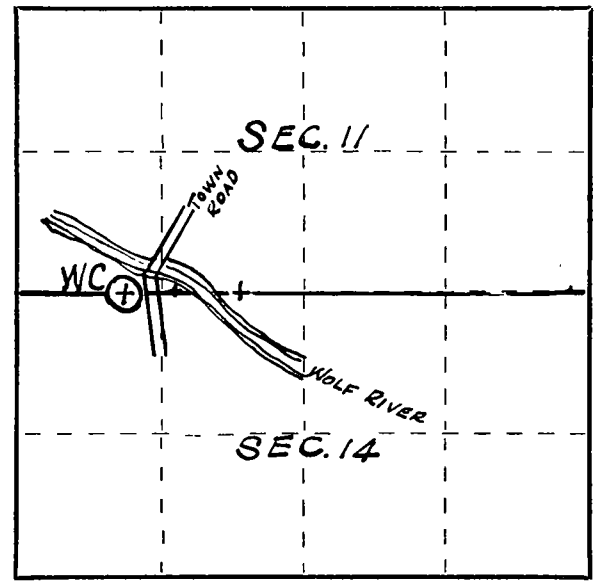
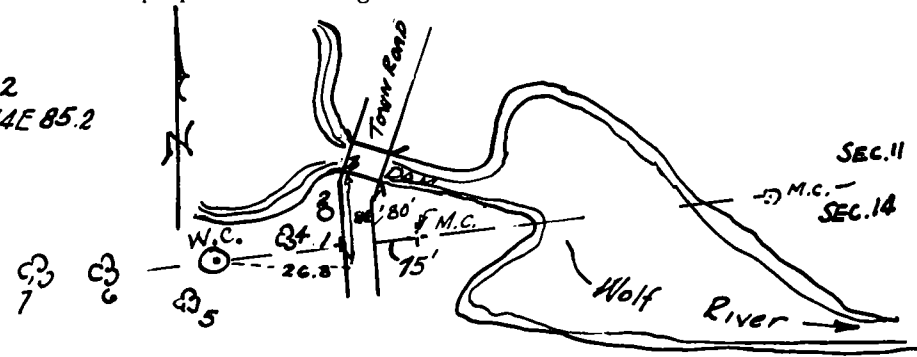
Description of corner evidence found:



WITNESS COR
BRASS CAP IN CONC.
MKD
WIT. COR
SEC. 11
SEC. 14
75' ft. E To MEA. COR.

Description of monument and accessories I established to perpetuate the original location of this corner.

1. 2" Iron pipe on Line -17.2'
2. Power pole 3411-14W2 N61 1/4 E 41.2
3. Top of SW Cor. Bridge parapet N44E 85.2
4. W. Pine 18 N68 1/2 E 16.8'
5. Norway Pine 24 S59 W 15.3
6. Norway Pine 10 S70 1/2 W 23.3
7. White Birch 12 S67 1/2 W 36.4



○ = Corner monument restored.

Dated at ELCHO, Wis., this 18th day of May, 1968.

Signature Robert J. Poss Title Reg. Land Surveyor Registration No. S-1
(County Surveyor, Registered Land Surveyor, or other duly authorized official)

Office of Register of Deeds, County of....., I hereby certify that the within instrument was filed in this office for record on the..... day of....., 19..... at..... o'clock..... M.

.....
(Register of Deeds)

By..... Deputy

FORM 985 M. C. MILLER CO. - MILWAUKEE