

CERTIFIED LAND CORNER RESTORATION

Index No. J-20

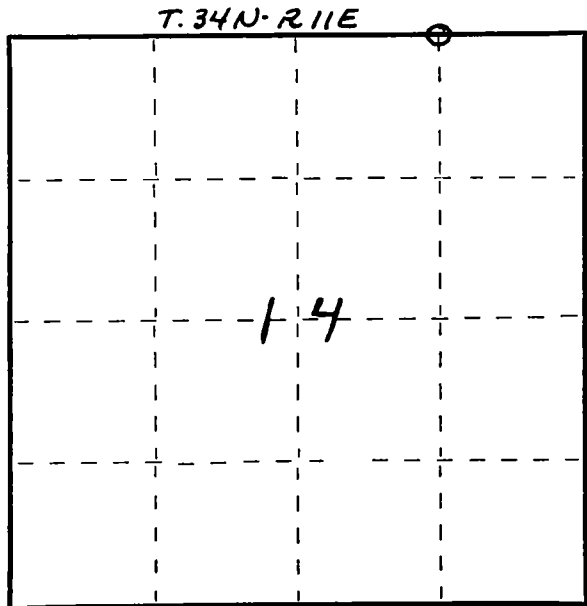
State of Wisconsin }
 County of LANGLADE } ss.

I WILLIAM F. KELLY, do hereby certify that on the 14TH day of JANUARY, 1976, I found evidence of the E 1/8 corner of SECTIONS 11 & 14 Township 34, North, Range 11 E, Fourth Principal Meridian, as described hereon; and that from this evidence I established a new monument and accessories as described hereon to perpetuate the original location of this corner.

Resident witnesses:

.....

FORM 985 H. C. MILLER CO., MILWAUKEE



○ = Corner monument restored.

History of original corner establishment:

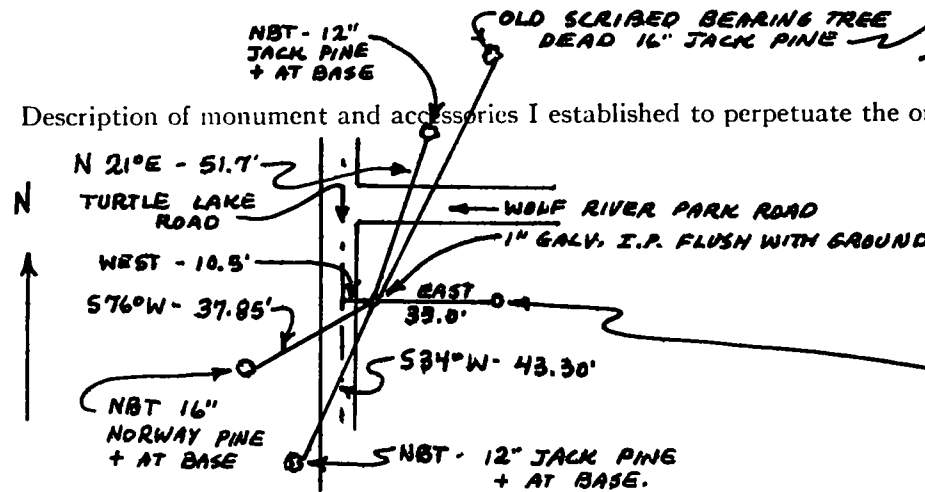
Description of corner evidence found:

FOUND OLD BEARING TREE SCRIBED:

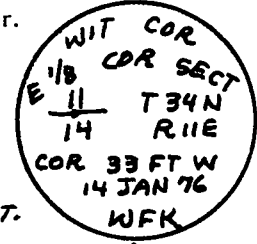


William F. Kelly

Description of monument and accessories I established to perpetuate the original location of this corner.



SET E 1/8 CORNER
 SECT 11/14 T34N-R11E
 ON CONTROL SURVEY
 BETWEEN THE N 1/4
 CORNER AND THE
 NE CORNER OF SECT.
 14 T. 34N. R. 11.E



SET WITNESS CORNER -
 1 1/2" B.I.P. WITH BRASS
 CAP MARKED:

Dated at ELCHO, Wis., this 14TH day of JANUARY, 1976.

Signature William F. Kelly Title REGISTERED LAND SURVEYOR Registration No. 51098
 (County Surveyor, Registered Land Surveyor, or other duly authorized official)

Office of Register of Deeds, County of....., I hereby certify that the within instrument was filed in this office for record on the.....day of....., 19..... at.....o'clock..... M.

(Register of Deeds)

By.....Deputy