

4341109 2000

U.S. PUBLIC LAND SURVEY MONUMENT RECORD

(Prepared and as required by S. A-E 7.08 WI Administrative Code)

Corner was: (check all that apply)

- Restored through acceptance of an obliterated evidence location
- Restored through acceptance of a found perpetuated location
- Determined to be lost and reestablished through proportionate methods.
(Show bearings and distances to PLSS corners used for proportioning) SHOWN ON BACK
- Restored/recovered/reestablished in a location that differs from a previously established position. (Show difference in plan view below.)
- Check here if additional information is shown on the reverse side of this form

Describe record evidence, recovered physical evidence, occupational evidence, testimonial evidence and all other evidence considered in the recovery/restoration of corner.

1859 - Original Corner established by Daugherty W.E.
 Original BT's : yellow pine, 12", N76°W, 15 lks.
 Original BT's : yellow pine, 8", S80°E, 19 lks.

Physical description of the monument set:

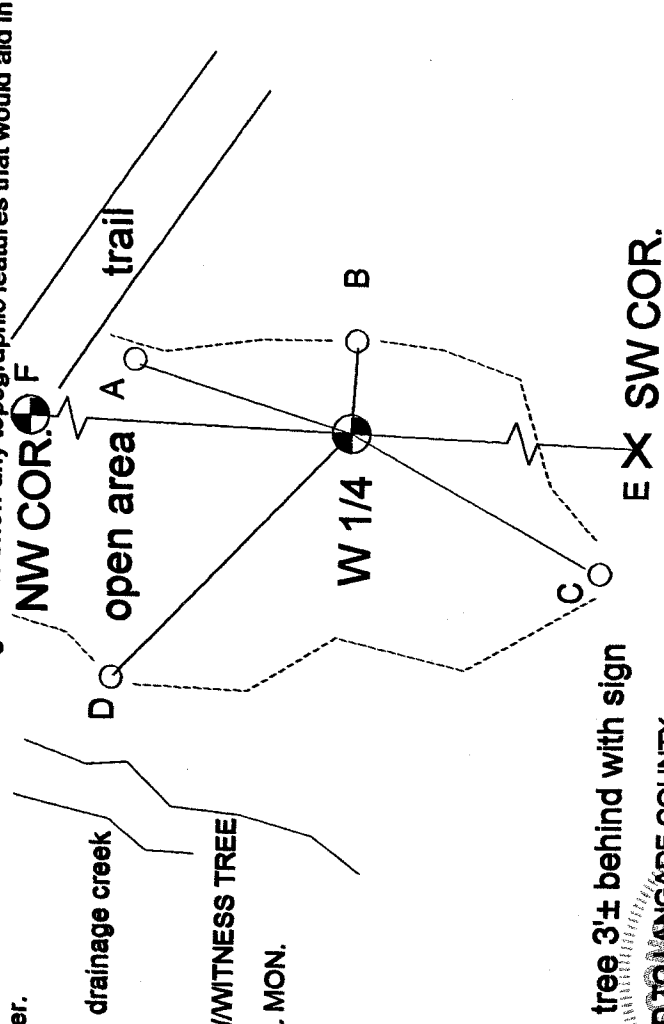
2007 - Dean A. Williams and James Gardner found nothing, used Gene Uttech section breakdown location.
 Accepted Gene Uttech's lost evidence coordinate location work as best possible evidence of corner location
 (Note on back)

Set 3.5" Brass capped county monument x 30 i.p. flush with white vinyl post 1'± near.
 Retied and accepted as best possible evidence of corner location.

Describe the accessories used to perpetuate the location of the corner. Include a plan view drawing and indicate accessories found/set. Describe measuring point on bearing trees. Show any topographic features that would aid in future recovery of the corner.

not to scale
Legend

- SET .75" X 24" I.R. W/WITNESS TREE
- SET 3.5" I.P.B.C. CO. MON.



A-D have wit. tree 3'± behind with sign

BEARINGS REFERENCED TO LANGADE COUNTY COORDINATE SYSTEM

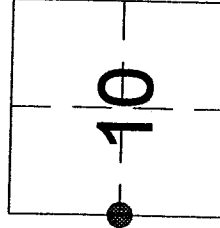
A	N17°09'09"E, 11.16', 12" aspen
B	S86°46'04"E, 2.48', 5" aspen
C	S29°07'31"W, 19.78', 15" birch
D	N46°13'36"W, 25.73', 6" birch
E	S0°47'22"W, 2633.95'
F	N2°37'14"E, 2633.95'

I, Dean A. Williams RLS 2468, certify that the corner location shown on this record was determined by me or under my direction and control and that this U.S. Public Land Survey Record is correct and complete to the best of my knowledge and belief.

Dean Williams
 Signature Date 12/20/07

The West 1/4 corner of Section 10 T.34N., R.11E., Langlade County, WI

INDEX NO. G13

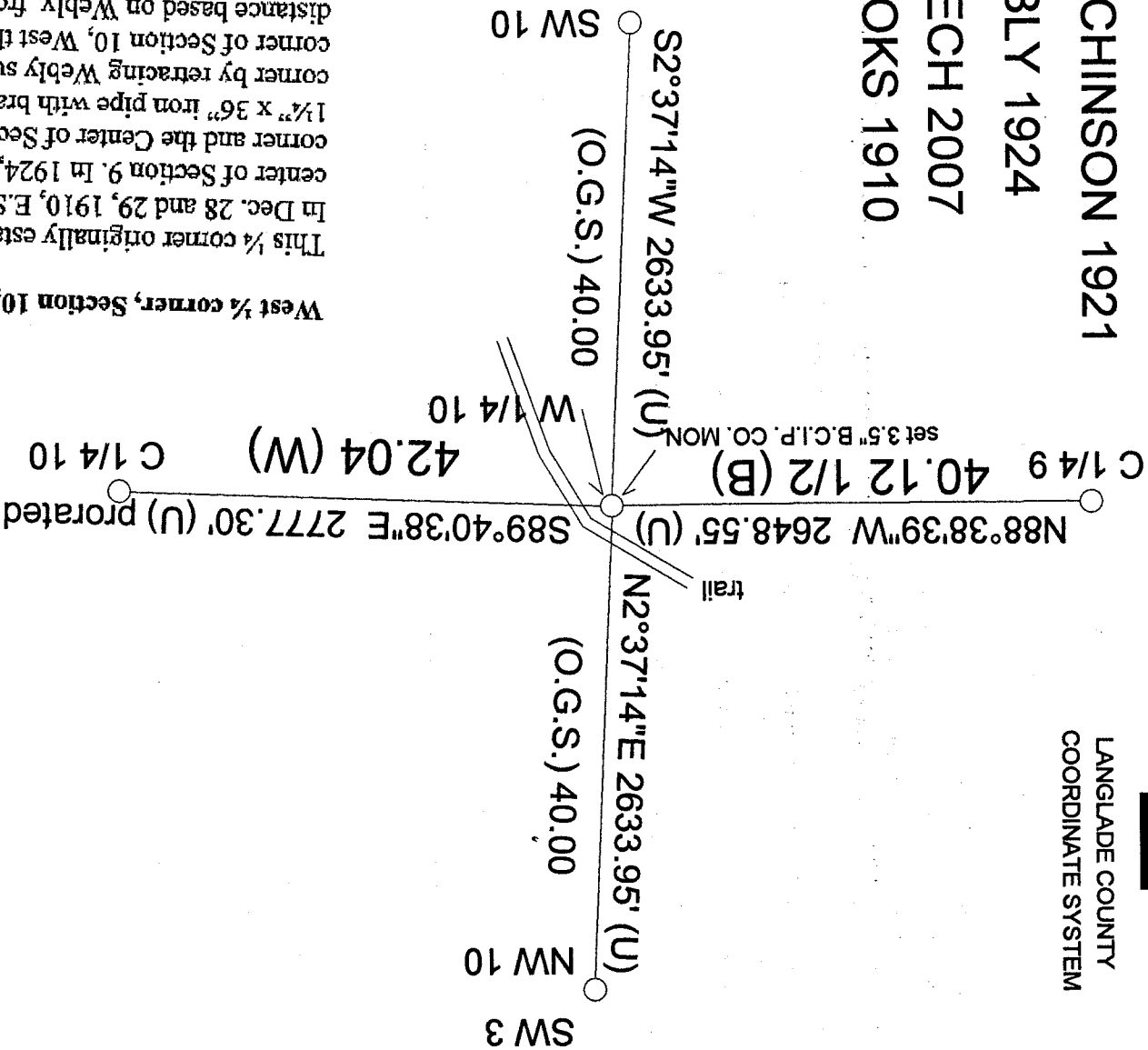


● = Location of corner

LANGLADE COUNTY
COORDINATE SYSTEM



- (O.G.S.) ORIG. GOV. SURVEY
- (H) HUTCHINSON 1921
- (W) WEBLY 1924
- (U) UTTECH 2007
- (B) BROOKS 1910



West 1/4 corner, Section 10, T.34 N., R.11 E.

This 1/4 corner originally establish by W.E. Daugherty, dated June, 1859. In Dec. 28 and 29, 1910, E.S. Brooks, (FB.94 Pg. 87 referenced to this 1/4 corner and the center of Section 9. In 1924, W.C. Webly (FB.101-Pg. 104,105) referenced to this 1/4 corner and the Center of Section 10. On 5/26/1994, David Tlusty, County Surveyor, set a 1 1/2" x 36" iron pipe with brass cap at the Center of Section 10. I reestablished this 1/4 corner by retracing Webly survey in 1924. I extended a straight line from the East 1/4 corner of Section 10, West thru the Center of Section 10 and set corner at proportioned distance based on Webly, from said East 1/4 corner of Section 10, to the Center of Section 10 and the called distance from the Center of 10 to the East 1/4 corner. At the site I found this 1/4 corner location falls in gravel road that had been graded and any evidence of bearing trees had been destroyed.

1" = 1000'

