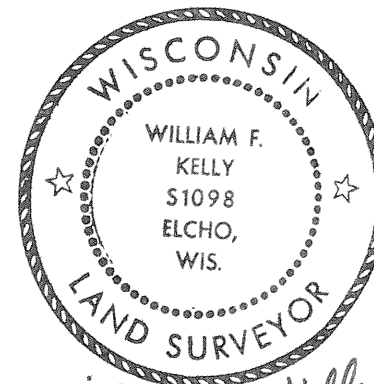


CERTIFIED LAND CORNER RESTORATION

Index No. J-7

State of Wisconsin }
County of LANGLADE } ss.

History of original corner establishment:



I WILLIAM F. KELLY, do hereby certify that on the 21ST day of SEPTEMBER, 1977, I found evidence of the 1/4 SECTION 8 SECTION 17 corner of 34 Township, 11E, North, Range, Fourth Principal Meridian, as described hereon; and that from this evidence I established a new monument and accessories as described hereon to perpetuate the original location of this corner.

Description of corner evidence found:

FOUND REMAINS OF OLD CEDAR POST. ALSO FOUND A HEMLOCK STUMP IN THE LOCATION SHOWN IN ORIGINAL NOTES AS WITNESS TREE.

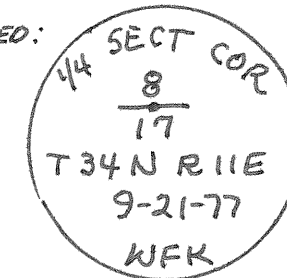
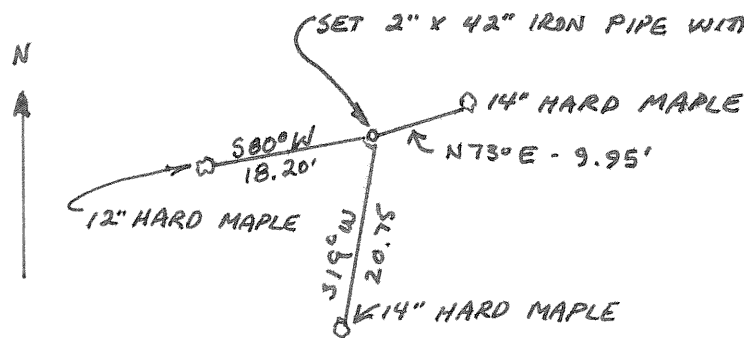
William F. Kelly 9-21-77

Resident witnesses:

.....
.....
.....

Description of monument and accessories I established to perpetuate the original location of this corner.

SET NEW MONUMENT IN CEDAR POST LOCATION. MARKED NEW WITNESS TREES.



Dated at ELCHO, Wis., this 21ST day of SEPTEMBER, 1977

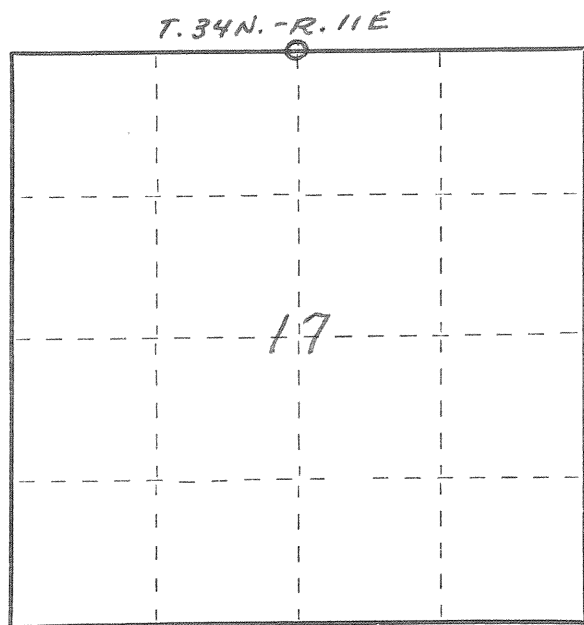
Signature William F. Kelly Title REGISTERED LAND SURVEYOR Registration No. 51098
(County Surveyor, Registered Land Surveyor, or other duly authorized official)

Office of Register of Deeds, County of, I hereby certify that the within instrument was filed in this office for record on the day of, 19..... at o'clock M.

(Register of Deeds)

By Deputy

FORM 985 H. C. MILLER CO., MILWAUKEE



○ = Corner monument restored.