

CERTIFIED LAND CORNER RESTORATION

Index No. J-8

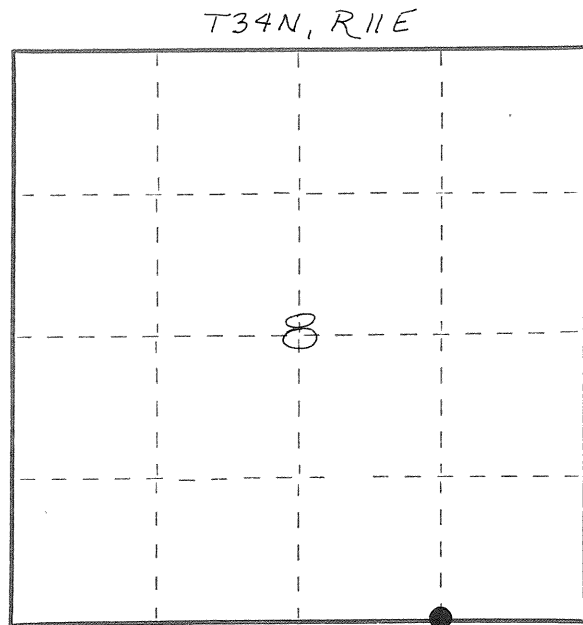
State of Wisconsin }
 County of LANGLADE } ss.

I WILLIAM F. KELLY, do hereby certify that on the 15th day of AUGUST, 19 80, I found evidence of the E 1/8 CORNER ON THE CORNER OF SOUTH LINE OF SECTION 8 Township 34, North, Range 11 E, Fourth Principal Meridian, as described hereon; and that from this evidence I established a new monument and accessories as described hereon to perpetuate the original location of this corner.

Resident witnesses:

.....

FORM 985 H. C. MILLER CO., MILWAUKEE



○ = Corner monument restored.

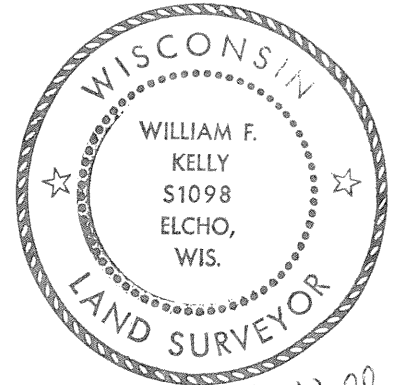
History of original corner establishment:

Description of corner evidence found:

NO EVIDENCE OF THE ORIGINAL CORNER COULD BE FOUND.

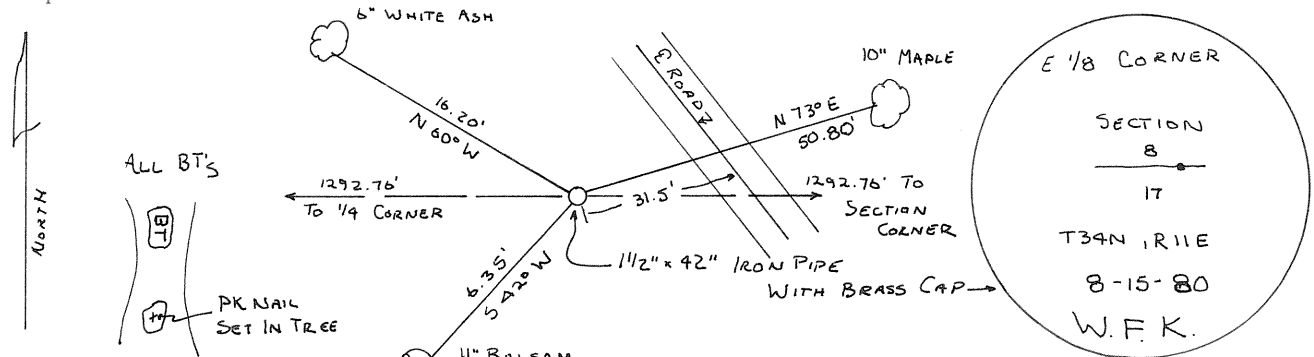
CORNER ESTABLISHED AT MID POINT BETWEEN THE SOUTH 1/4 CORNER AND THE SE CORNER OF SEC. 8, T34N, R11E.

1 1/2" x 42" IRON PIPE WITH BRASS CAP SET.



William F. Kelly

Description of monument and accessories I established to perpetuate the original location of this corner.



Dated at ELCHO, Wis., this 18th day of AUGUST, 19 80.

Signature William F. Kelly Title COUNTY SURVEYOR Registration No. 1098
 (County Surveyor, Registered Land Surveyor, or other duly authorized official)

Office of Register of Deeds, County of, I hereby certify that the within instrument was filed in this office for record on the day of, 19..... at o'clock M.

.....
 (Register of Deeds)

By Deputy