

CERTIFIED LAND CORNER RESTORATION

Index No. C-3

State of Wisconsin }
 County of Langlade } ss.

I, Jeffrey T. Rustick, do hereby certify that on the 20th day of April, 1991, I found no evidence of the Center corner of Section 6 Township 34, North, Range 11 East, Fourth Principal Meridian, as described hereon; and that from this evidence I established a new monument and accessories as described hereon to perpetuate the original location of this corner.

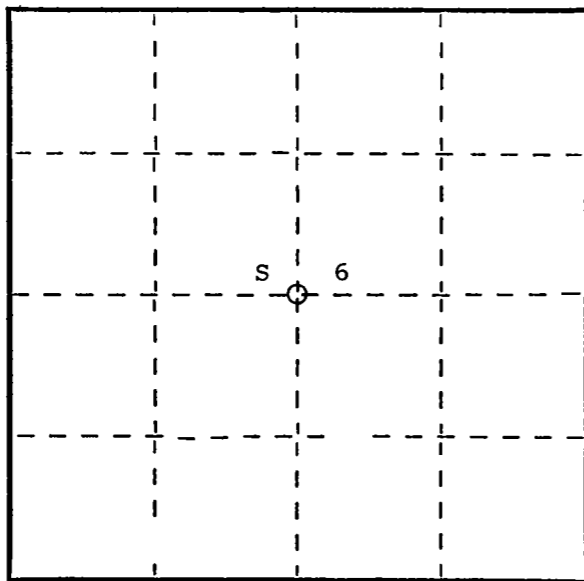
Resident witnesses:

Jeff Rustick

Tom Rustick

FORM 985 W. C. MILLER CO., MILWAUKEE

T 34 N, R 11 E



○ = Corner monument restored.

History of original corner establishment:

No record of the center of section having been set.

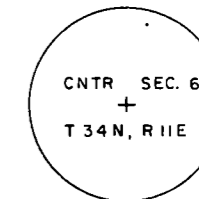
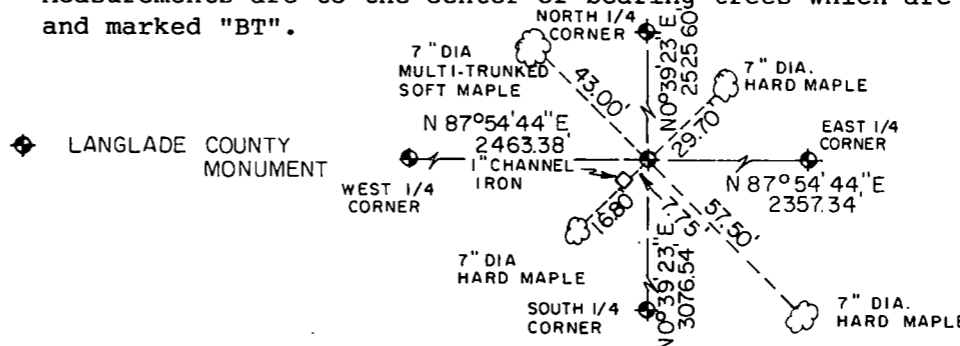
Description of corner evidence found:

Corner was set at the straight line intersection of the 1/4 corners of Section 6.



Description of monument and accessories I established to perpetuate the original location of this corner.

Measurements are to the center of bearing trees which are blazed and marked "BT".



Dated at Elcho, Wis., this 20th day of July, 1991

Signature Jeffrey T. Rustick Title Registered Land Surveyor Registration No. 2036
 (County Surveyor, Registered Land Surveyor, or other duly authorized official)

Office of Register of Deeds, County of _____, I hereby certify that the within instrument was filed in this office for record on the _____ day of _____, 19____ at _____ o'clock _____ M.

(Register of Deeds)

By _____ Deputy