

CERTIFIED LAND CORNER RESTORATION

Index No. E-6

State of Wisconsin }
County of Langlade } ss.

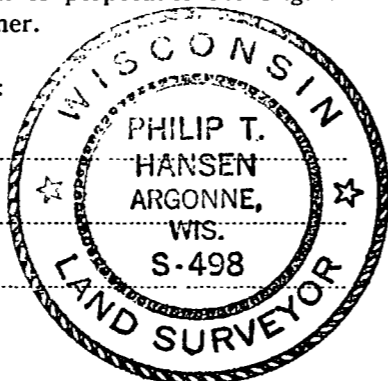
I Philip T. Hansen, do hereby certify that on the 19th day of March, 1980, I ~~found~~ established ~~xxxxxx~~ the W 1/16 corner of sections 5 and 8 Township 34, North, Range 11 East, Fourth Principal Meridian, as described hereon; and that from this evidence I established a new monument and accessories as described hereon to perpetuate the original location of this corner.

Resident witnesses:

Glen Barker

Jim Claflin

Herb Wagoner



History of original corner establishment:
No record of any previous survey.

Description of corner evidence found:

No evidence of any corner recovered.

Corner established by traverse and computation. Ran traverse from 1/4 corner between sections 5 and 8 to section corner 5, 6, 7 and 8. Computed distance - 3102.86 feet at bearing N 87° 29' 51" W.

Description of monument and accessories I established to perpetuate the original location of this corner.

Set a 1-1/2" iron pipe with screw-on brass cap - stamped:
Monument projects 12" above ground.

Marked NBT's -

B.Spruce 6" S36°E 69.45' scribed 1/16 BT.

W.Birch 6" N68°E 29.85' scribed 1/16 BT.

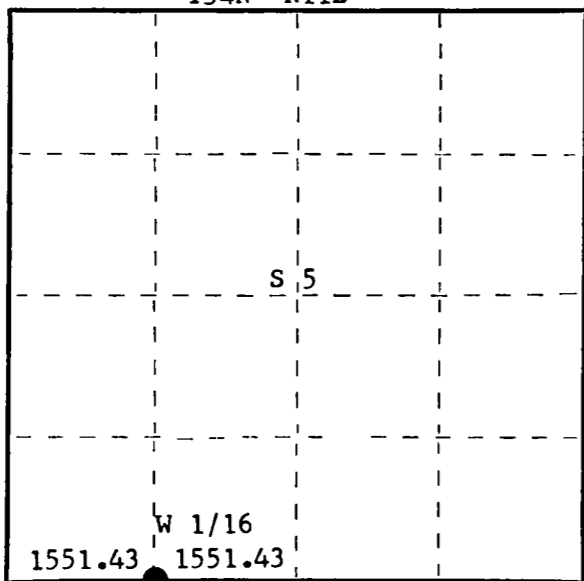
T34N R11E

W 1/16 S+5
S+8

S498 - 1980

FORM 985 H C MILLER CO. MILWAUKEE

T34N R11E



○ = Corner monument restored.

Dated at Rhineland, Wis., this 27th day of March, 1980.

Signature Philip T. Hansen Title Registered Land Surveyor Registration No. S-498
(County Surveyor, Registered Land Surveyor, or other duly authorized official)

Office of Register of Deeds, County of Langlade, I hereby certify that the within instrument was filed in this office for record on the _____ day of _____, 19____ at _____ o'clock _____ M.

(Register of Deeds)

By _____ Deputy