

4341104 0020

U.S. PUBLIC LAND SURVEY MONUMENT RECORD

Corner was: (check all that apply)

- Restored through acceptance of an obliterated evidence location
- Restored through acceptance of a found perpetuated location
- Determined to be lost and reestablished through proportionate methods (Show bearings and distances to PLSS corners used for proportioning) SHOWN OF BACK
- Restored/Recovered/Reestablished in a location that differs from a previously established position. (Show difference in plan view below)

Describe record evidence, recovered physical evidence, occupational evidence, testimonial evidence and all other evidence in the recovery/restoration of corner.

1859-Corner Post set by Daugherty, W.E.

Original Bearing Trees: Hemlock, 12", N2°E, 20 lks.
 Birch, 14", S53°E, 6 lks.

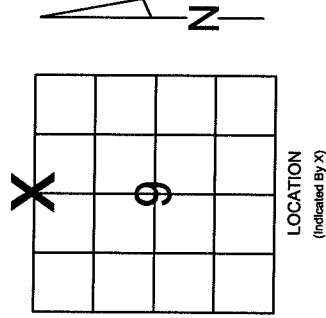
Notes from Brooks (1910) and Hutchinson (1921) were evaluated to confirm location of found nail at corner location set by Eugene Uttech. The nail was accepted as best available evidence of the corners location.

Physical description of the monument set:

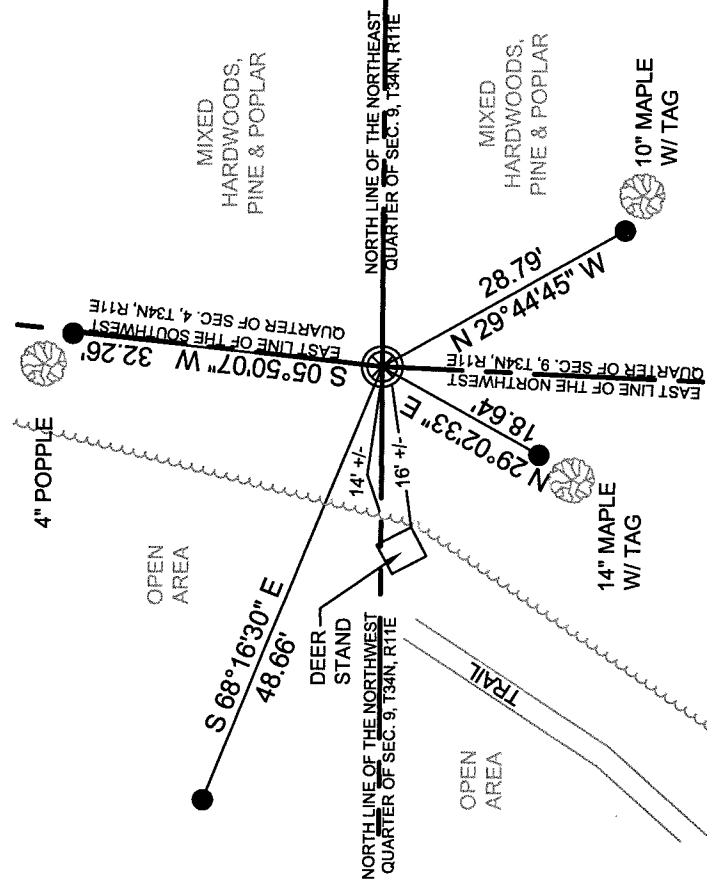
Set 2.5" Iron Pipe with Brass capped County Monument approximately 6" above grade with a white vinyl post 1'+/-.

Describe the accessories used to perpetuate the location of the corner. Include a plan view drawing and indicate the accessories found/set. Describe measuring point on bearing trees. Show any topographic features that would aid in future recovery of the corner.

The North Quarter Corner of Section
 9, Township 34 North, Range 11 East,
 Langlade County, WI

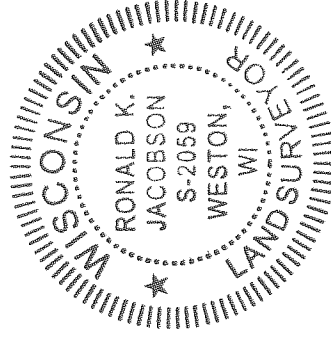


BEARINGS ARE REFERENCED TO THE
 LANGLADE COUNTY COORDINATE
 SYSTEM



I, Ronald Jacobson RLS 2059, certify that the corner shown on this record was determined by me or under my direction and control and that this U.S. Public Land Survey Record is correct and complete to the best of my knowledge and belief.

Ronald Jacobson
 Signature 4-20-10
 Date



LEGEND

- Set 2.5" x 30" Iron Pipe with brass cap
- Set 0.75" Iron Bar

E11 34-11