

43411040000

U.S. PUBLIC LAND SURVEY MONUMENT RECORD

(Prepared and as required by S. A-E 7.08 Wi Administrative Code)

Corner was: (check all that apply)

- Restored through acceptance of an obliterated evidence location
- Restored through acceptance of a found perpetuated location
- Determined to be lost and reestablished through proportionate methods.
(Show bearings and distances to PLSS corners used for proportioning) SHOWN ON BACK
- Restored/recovered/reestablished in a location that differs from a previously established position. (Show difference in plan view below.)
- Check here if additional information is shown on the reverse side of this form

Describe record evidence, recovered physical evidence, occupational evidence, testimonial evidence and all other evidence considered in the recovery/restoration of corner.

1859 - Original Corner established by Daugherty W.E.
 Original BT's : sugar, 16", N46°E, 84 lks.
 Original BT's : birch, 6", N64°W, 31 lks.

Physical description of the monument set:

2007 - Dean A. Williams and James Gardner found nothing, used Gene Uttech section breakdown location.
 Accepted Gene Uttech's lost evidence coordinate location work as best possible evidence of corner location
 (Note on back)

Set 3.5" Brass capped county monument x 30 i.p. flush with white vinyl post 1'± near.
 Retied and accepted as best possible evidence of corner location.

Describe the accessories used to perpetuate the location of the corner. Include a plan view drawing and indicate accessories found/set. Describe measuring point on bearing trees. Show any topographic features that would aid in future recovery of the corner.

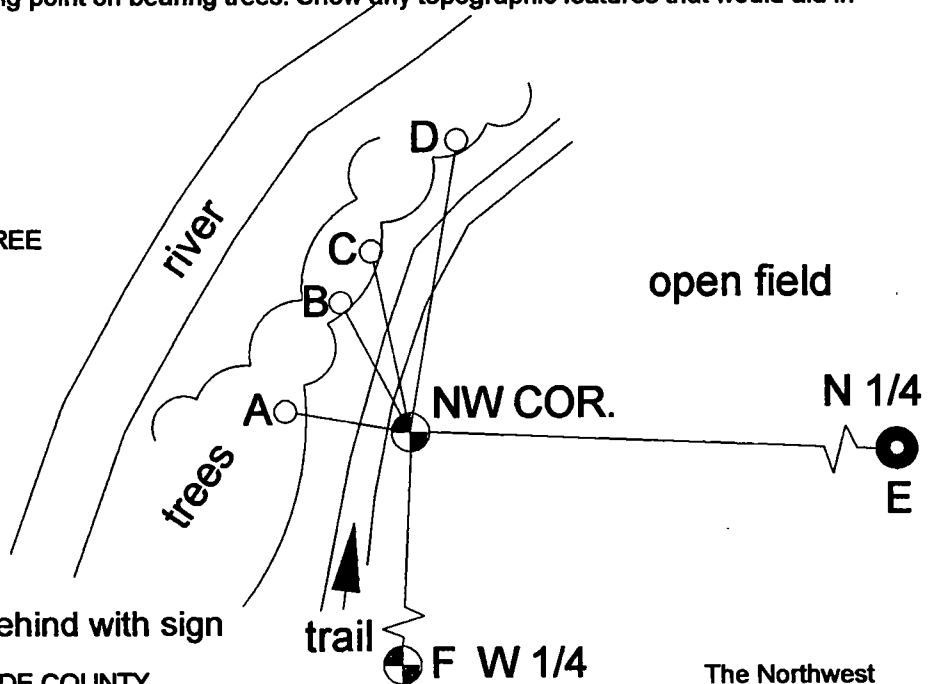
not to scale

Legend

- SET .75" X 24" I.R. W/WITNESS TREE
- ⊕ SET 3.5" I.P.B.C. CO. MON.
- SET 1.3" I.P. W/ALUM CAP



A-D have wit. tree 3'± behind with sign



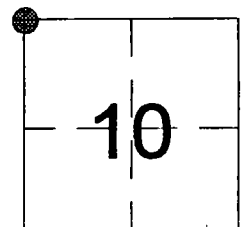
BEARINGS REFERENCED TO LANGLADE COUNTY COORDINATE SYSTEM DEAN WILLIAMS

I, Dean A. Williams RLS 2468, certify that the corner location shown on this record was determined by me or under my direction and control and that this U.S. Public Land Survey Record is correct and complete to the best of my knowledge and belief.

Dean Williams 12/20/07
 Signature Date

A	N80°15'42"W, 28.00', 3" birch
B	N28°15'12"W, 30.49', 3" cherry
C	N12°03'47"W, 56.94', 5" oak
D	N9°18'58"E, 81.92', 4" birch
E	S87°45'05"E, 2732.93'
F	S2°37'14"W, 2633.95'

The Northwest corner of Section 10 T.34N., R.11E., Langlade County, WI



● = Location of corner

INDEX NO. E13



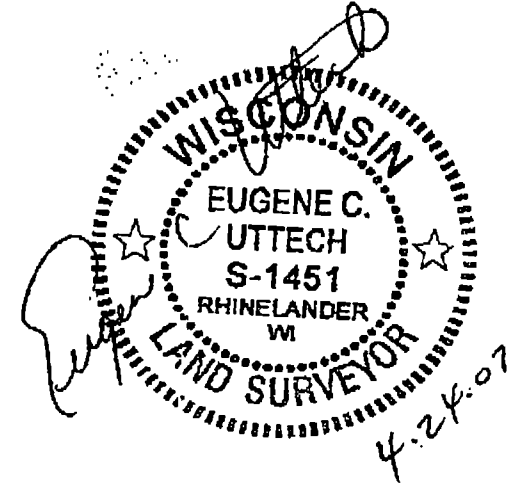
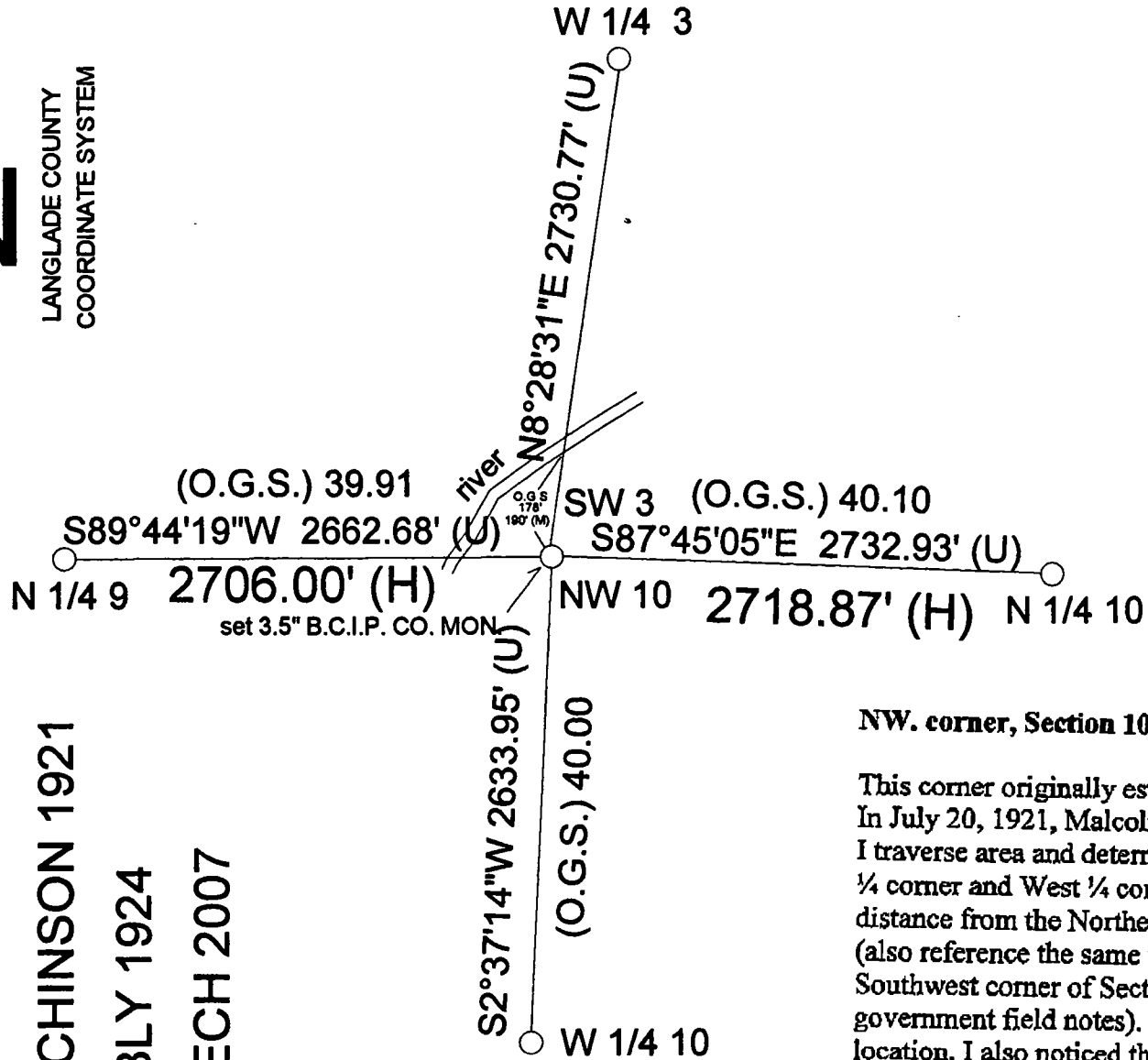
LANGLADE COUNTY
COORDINATE SYSTEM

(O.G.S.) ORIG. GOV. SURVEY

(H) HUTCHINSON 1921

(W) WEBLY 1924

(U) UTTECH 2007



NW. corner, Section 10, T.34 N., R.11 E.

This corner originally establish by W.E. Daugherty, dated June, 1859.
In July 20, 1921, Malcolm Hutchinson, (FB - Pg.81, 82) referenced to this corner.
I traverse area and determined this corner location had been best perpetuated by the North 1/4 corner and West 1/4 corner of Section 10. I reestablished this corner by doubling the distance from the Northeast corner of Section 10, to the North 1/4 corner of Section 10 (also reference the same way by Hutchinson) and doubled the distance from the Southwest corner of Section 10 to the West 1/4 corner of Section 10 (reference in original government field notes). I believe this is the most probable location of the original corner location. I also noticed the original government field notes called for a distance along the West line of Section 3, 178 feet to stream. I measured a distance of 190 feet to bank of stream, which is running Northeasterly.

1" = 1000'