

CERTIFIED LAND CORNER RESTORATION

Index No. D-17

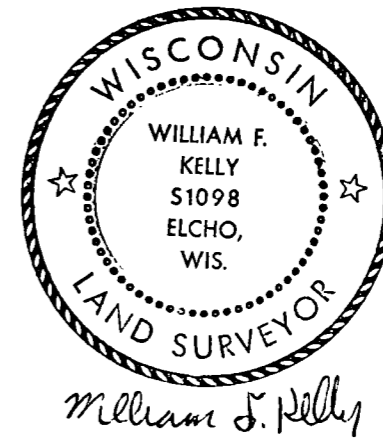
State of Wisconsin }  
County of LAKELAND } ss.

I WILLIAM F. KELLY, do hereby certify that on the 14<sup>TH</sup> day of MARCH, 1978, I found evidence of the 5/8 corner of SECTION 3 1/2 Township 34, North, Range 11 E, Fourth Principal Meridian, as described hereon; and that from this evidence I established a new monument and accessories as described hereon to perpetuate the original location of this corner.

Resident witnesses:

.....  
.....  
.....

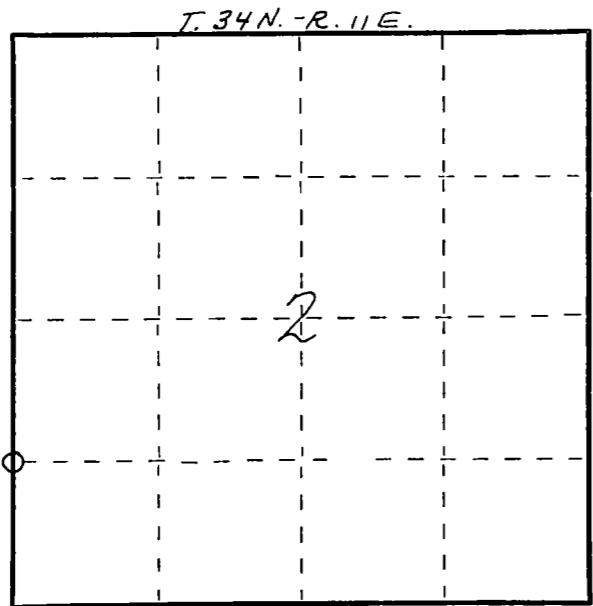
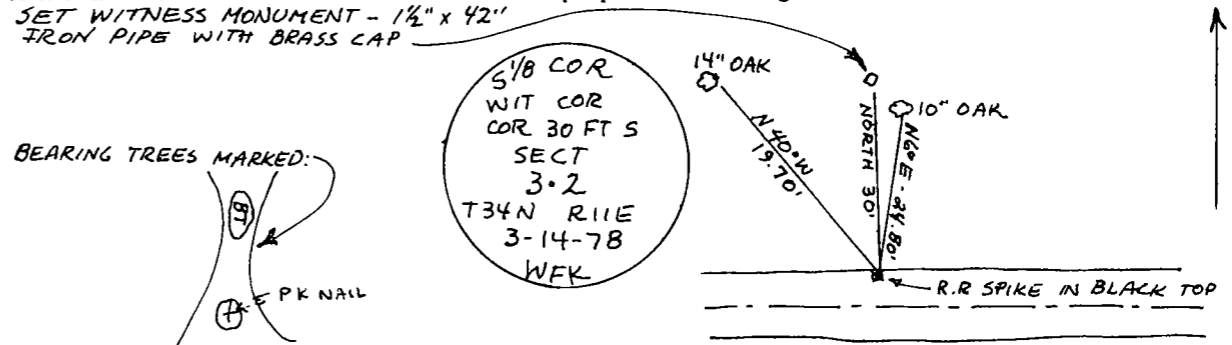
History of original corner establishment:



Description of corner evidence found:

ESTABLISHED 5/8 CORNER BETWEEN SECTION 3 1/2 T. 34N. - R. 11E. AT MID POINT BETWEEN THE SECTION CORNER AND 1/4 CORNERS.

Description of monument and accessories I established to perpetuate the original location of this corner.



○ = Corner monument restored.

Dated at ELCHO, Wis., this 14<sup>TH</sup> day of MARCH, 1977

Signature William F. Kelly Title REGISTERED LAND SURVEYOR Registration No. 51098  
(County Surveyor, Registered Land Surveyor, or other duly authorized official)

Office of Register of Deeds, County of....., I hereby certify that the within instrument was filed in this office for record on the..... day of....., 19..... at..... o'clock..... M.

.....  
(Register of Deeds)

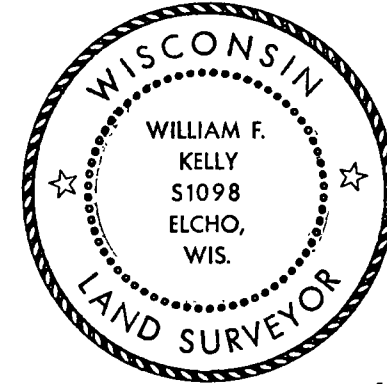
By..... Deputy

CERTIFIED LAND CORNER RESTORATION

Index No. D-17

State of Wisconsin }  
County of LANGLADE } ss.

History of original corner establishment:



*William F. Kelly*

I WILLIAM F. KELLY, do hereby certify that on the 14 day of March, 1978, I found evidence of the SOUTH 1/8 corner of SECTION 2 Township 34, North, Range 11E, Fourth Principal Meridian, as described hereon; and that from this evidence I established a new monument and accessories as described hereon to perpetuate the original location of this corner.

Description of corner evidence found:

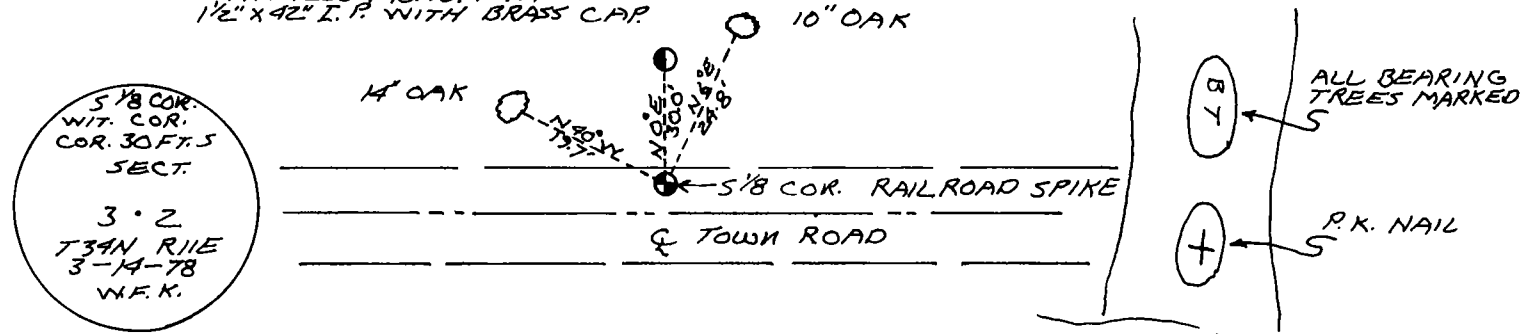
*RE-ESTABLISHED SOUTH 1/8 COR. BY SPLITTING DISTANCE BETWEEN SW COR. OF SEC. 2, & THE WEST 1/4 COR. OF SEC. 2, & SET R.R. SPIKE IN PAVEMENT.*

*SET BRASS CAP WIT. COR. & SET NEW B.T.'S.*

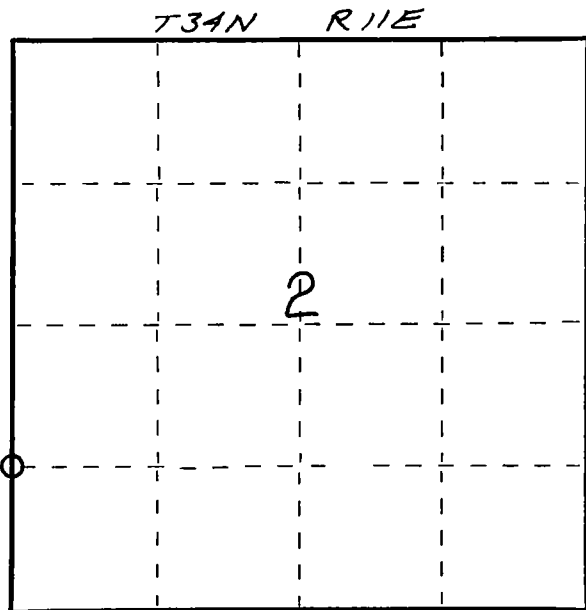
Resident witnesses:

Description of monument and accessories I established to perpetuate the original location of this corner.

*WITNESS MONUMENT  
1/2" X 42" I. P. WITH BRASS CAP*



FORM 985 M. C. MILLER CO., MILWAUKEE



○ = Corner monument restored.

Dated at ELCHO, Wis., this 7 day of December, 1978

Signature William F. Kelly Title COUNTY SURVEYOR Registration No. S-1098  
(County Surveyor, Registered Land Surveyor, or other duly authorized official)

Office of Register of Deeds, County of \_\_\_\_\_, I hereby certify that the within instrument was filed in this office for record on the \_\_\_\_\_ day of \_\_\_\_\_, 19\_\_\_\_ at \_\_\_\_\_ o'clock \_\_\_\_\_ M.

(Register of Deeds)

By \_\_\_\_\_ Deputy