

43411030020

U.S. PUBLIC LAND SURVEY MONUMENT RECORD

(Prepared and as required by S. A-E 7.08 Wi Administrative Code)

Corner was: (check all that apply)

- Restored through acceptance of an obliterated evidence location
- Restored through acceptance of a found perpetuated location
- Determined to be lost and reestablished through proportionate methods.
(Show bearings and distances to PLSS corners used for proportioning) SHOWN ON BACK
- Restored/recovered/reestablished in a location that differs from a previously established position. (Show difference in plan view below.)
- Check here if additional information is shown on the reverse side of this form

Describe record evidence, recovered physical evidence, occupational evidence, testimonial evidence and all other evidence considered in the recovery/restoration of corner.

1859 - Original Corner established by Daugherty W.E.

Original BT's : sugar, 16", N46°E, 84 lks.

Original BT's : birch, 6", N64°W, 31 lks.

Physical description of the monument set:

2007 - Dean A. Williams and James Gardner found nothing, used Gene Uttech section breakdown location.

Accepted Gene Uttech's lost evidence coordinate location work as best possible evidence of corner location

Set 3.5" Brass capped county monument x 30 i.p. flush with white vinyl post 1'± near.

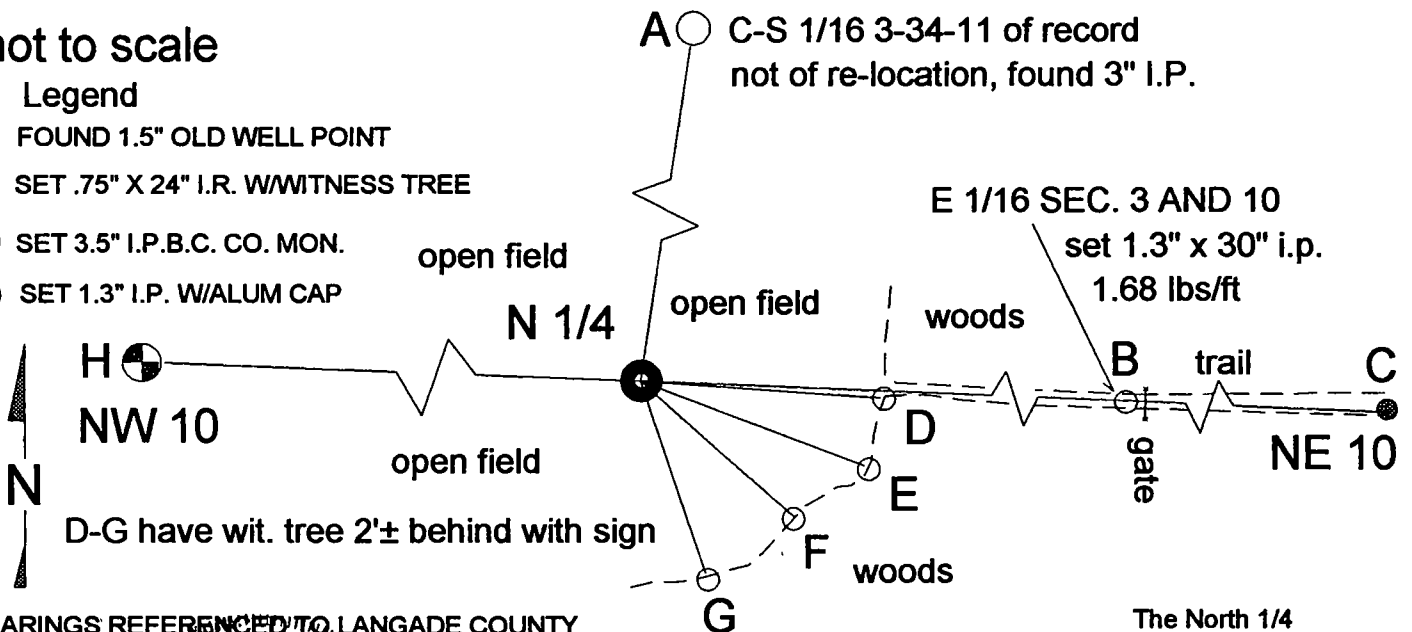
Retied and accepted as best possible evidence of corner location.

Describe the accessories used to perpetuate the location of the corner. Include a plan view drawing and indicate accessories found/set. Describe measuring point on bearing trees. Show any topographic features that would aid in future recovery of the corner.

not to scale

Legend

- FOUND 1.5" OLD WELL POINT
- SET .75" X 24" I.R. W/WITNESS TREE
- SET 3.5" I.P.B.C. CO. MON.
- SET 1.3" I.P. W/ALUM CAP



BEARINGS REFERENCED TO LANGADE COUNTY COORDINATE SYSTEM

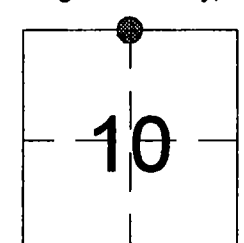
I, Dean A. Williams RLS 2488, certify that the corner location shown on this record was determined by me or under my direction and control and that this U.S. Public Land Survey Record is correct and complete to the best of my knowledge and belief.

Signature

Date

A	N8°29'04"E, 1399.02', meas.
B	S87°33'12"E, 1366.46'
C	S87°33'12"E, 2732.93'
D	S85°52'07"E, 607.86', 9" maple
E	S69°14'54"E, 605.63', 10" oak
F	S48°28'26"E, 536.48', 5" dbl. balsam
G	S18°38'21"E, 503.28', 12" w. birch
H	N87°45'05"W, 2732.93'

The North 1/4 corner of Section 10 T.34N., R.11E., Langlade County, WI



● = Location of corner

INDEX NO. E15



LANGLADE COUNTY
COORDINATE SYSTEM

(O.G.S.) ORIG. GOV. SURVEY
(H) HUTCHINSON 1921
(W) WEBLY 1924
(U) UTTECH 2007

set 3.5" B.C.I.P. CO. MON.

SW 3 N87°33'12"W 2732.93' (U)

NW 10

2718.87' (H)

S1°40'38"W 2686.10' (U)

40.81 ch (W)

USED UTTECH COORDINATE POSTION

C 10-34-11

C 3-34-11

USED UTTECH COORDINATE POSTION

N6°18'35"E 2715.08' (U)

(O.G.S.) 80.20

S87°33'12"E 2732.93' (U) SE 3

found 1.5" well poi...

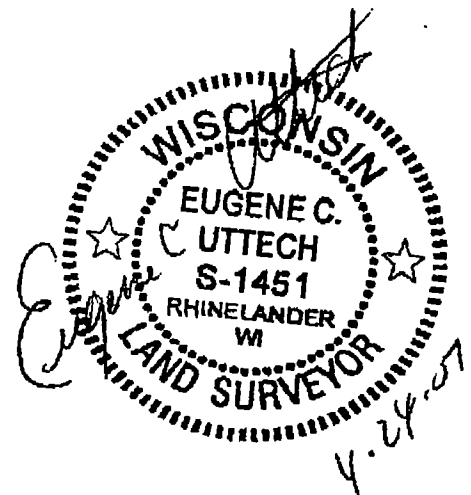
N 1/4

2718.87' (H)

NE 10

North 1/4 corner, Section 10, T.34 N., R.11 E.

This 1/4 corner originally establish by W.E. Daugherty, dated June, 1859.
In July 20, 1921, Malcolm Hutchinson, (FB - Pg.81, 82) referenced to this 1/4 corner.
In 1924, W.C. Webly (FB.101-Pg. 104,105) referenced to this 1/4 corner and the Center of Section 10. At the site this 1/4 corner falls in a cultivated field and any reference to bearing trees are gone. On July 1, 1967, Robert Poss, Registered Land Surveyor, set 6" dia. concrete monument with brass cap at the Center of Section 3. On 5/26/1994, David Thusty, County Surveyor, set 1 1/4" x 36" iron pipe with brass cap at the Center of Section 10. I traverse area and found if extended the North - South 1/4 line from the North 1/4 of Section 3, South, thru the Center of Section 3, and extended the North - South 1/4 line of Section 10, from the South 1/4 corner of Section 10, North thru Center of Section 10, these point are only 7.2 feet apart at the North line of Section 10. I believe the Center of Section 10 and the Center of Section 3, best perpetuated this original 1/4 corner location. I set this 1/4 corner mid way between the 7.2 feet and held proportion distance from Webly, based on measured distance from the South 1/4 corner of Section 10 to the Center of Section 10 and called distance by Webly from the Center of Section 10 to the North 1/4 corner of Section 10. I believe this best relocates the original location this 1/4 corner.



1" = 1000'