

LANGLADE COUNTY U.S. PUBLIC LAND CORNER RESTORATION

The Southeast corner of Section 3, T. 34 N., R. 11 E., Langlade County, WI.

Corner was: (check all that apply)

4341103 0000

- Restored through acceptance of an obliterated evidence location.
- Restored through acceptance of a found perpetuated location.
- Determined to be lost and re-established through proportionate methods.
(Show bearings and distances to PLSS corners used for proportioning, and show original distances).
- Restored/recovered/re-established in a location that differs from a previously established position.
(Show difference in plan view below).
- Check here if addition information is shown on the reverse side of this form.

Describe record evidence, recovered physical evidence, occupational evidence, testimonial evidence and all other evidence considered in the recovery/restoration of the corner.

The original corner was established in 1859 by William E. Daugherty. Original bearing trees: sugar, 16", N46°E, 84 links and a birch, 6", N66°W, 31 links. In 1907, B.F. Dorr (in FB96-100) re-established this corner by double proportion. In 1919, Webley (in FB101-80) described the corner as "pump point" set by Dorr. In 1926, Malcolm Hutchinson (in FB122-81) described the corner as a pump point. In 1926, Hutchinson showed this corner on the plat of Shady Shores, as being north and west of the intersection of town roads and 1419 feet from the meander corner to the East. In 1971, Robert Poss: "found iron pipe set by Duchac. Iron pipe imbedded in the blacktop - North edge of road. Found 2 BT's w/blaze & scribe". In 2006, D. Tlusty and Gene Uttech while working in Section 10 found that the Poss corner did not match record evidence mentioned above and on further investigation, found the well point mentioned by Webley and Hutchinson. I can't find any notes of this corner by Duchac as mentioned by Poss. Map 30544 shows the Poss location to be only 1256.86' from the meander corner East, a shortage of 162 feet from Hutchinson notes. Poss apparently did not have the records needed to make a proper decision on the location of the section corner. I accept the well point found as the corner established by Dorr and used by Webley and Hutchinson as the best evidence of the section corner.

Physical description of the monument set:

For the corner, I left the 1 1/4" well point in place and set a Berntsen SN-1 nail in the top of it. Set a white vinyl sign post 0.5' south of the corner monument.

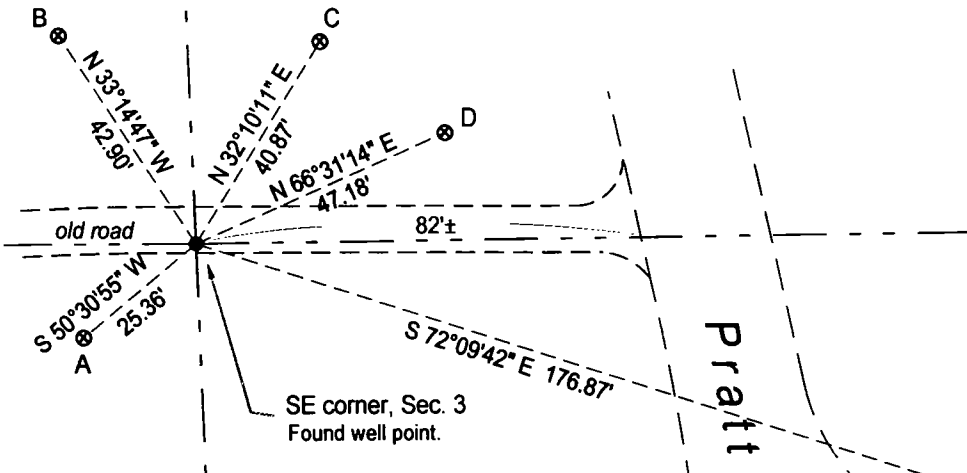
Describe the accessories used to perpetuate the corner. Include a plan view drawing and accessories found/set. Describe measuring point on bearing trees. Show any topographic features that would aid in future recovery of the corner.

Field book 16-436 ⁸⁹



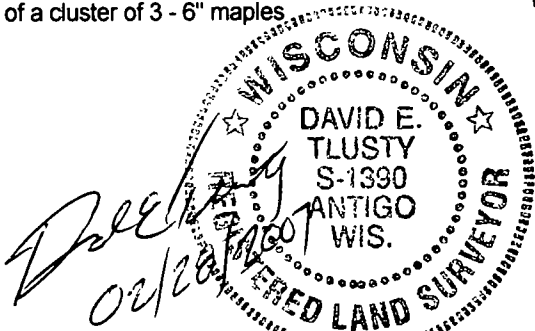
LEGEND

- 1" iron pipe found
 - 1 1/4" well point found
 - ⊗ 3/4" x 30" re-bar set flush
 - ◄ PK nail found
- Bearings basis: compass reading near corner.

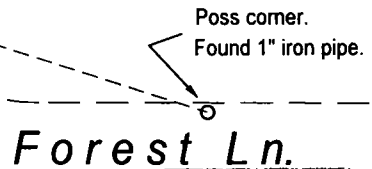


Tie references

- A is 5' East of a 32" oak
- B is 2.5' East of a 29" white pine
- C is 2.5' SW of a 6" maple
- D is 2.5' SW of a cluster of 3 - 6" maples



I, David E. Tlusty, Registered Land Surveyor, as Langlade County Surveyor, certify that the corner location on this record was determined by me and that this U.S. Public Land Survey Monument Record is correct to the best of my knowledge and belief.



○ = corner perpetuated
The Southeast corner of Section 3, T. 34 N., R. 11 E., Langlade County, WI

Index No. E 17 34-11

CERTIFIED LAND CORNER RESTORATION

34-11

Index No. 8-17

State of Wisconsin }
County of LANGLADE } ss.

I, ROBERT J. POSS, do hereby certify that on the 2ND day of JULY, 1971, I found evidence of the SECTION corner of SECS 2-3-10-11 Township 34, North, Range 11 EAST, Fourth, Principal Meridian, as described hereon; and that from this evidence I established a new monument and accessories as described hereon to perpetuate the original location of this corner.

Resident witnesses:

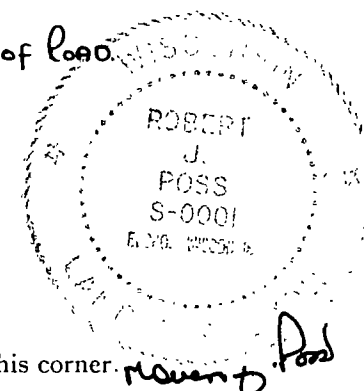
.....
.....
.....

History of original corner establishment:

FOUND IRON PIPE SET BY DUCHAC.

Description of corner evidence found:

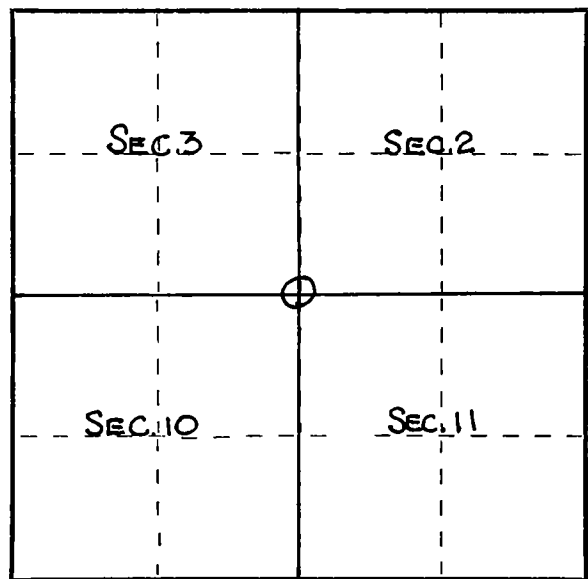
IRON PIPE IMBEDDED IN THE BLACKTOP - NORTH EDGE OF ROAD.
FOUND 2 BT'S. W/ BLAZE & SCRIBE.



Description of monument and accessories I established to perpetuate the original location of this corner.

2" IRON PIPE } MKD WIT. CORN SET
W/BRASS CAP } WIT. COR 50.0 NORTH of COR
 } SEC 2-2 50.0 SOUTH of "
 } 10" 6 100.0 WEST " "

- 1 = OAK W/OLD BLAZE & SCRIBE 12 S25.5E 33.0'
- 2 = W/PNE " " " 20 N47E 39.6'
- 3 = OAK 18-18 N50E 21.6 BLAZED & SCRIBED NBT.
- 4 = POWER POLE 933 1/2 W 67.4'
- 5 = STREET NAME POST N70W 48.6'
- 6 = HEMLOCK 12 N41 1/4 E 41.0' BLAZED & SCRIBED NBT
- 7 = TRIPLE OAK (MOST NLY) S34 1/2 W 43.3' BLAZED & SCRIBED NBT



○ = Corner monument restored.

Dated at ELCHO, WIS., Wis., this 12TH day of JULY, 1971

Signature Robert J. Poss Title REG. LAND SURVEYOR Registration No. S-0001
(County Surveyor, Registered Land Surveyor, or other duly authorized official)

Office of Register of Deeds, County of _____, I hereby certify that the within instrument was filed in this office for record on the _____ day of _____, 19____ at _____ o'clock _____ M.

(Register of Deeds)

By _____ Deputy