

CERTIFIED LAND CORNER RESTORATION

Index No. Z-24

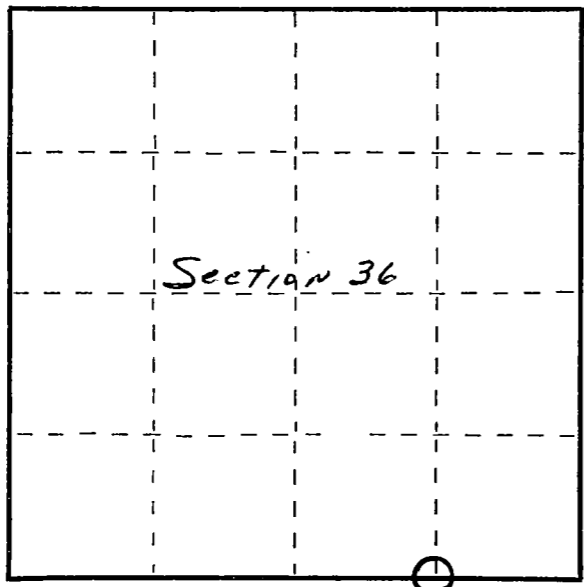
State of Wisconsin }
County of Langlade } ss.

I, Raymond J. Hallisy, do hereby certify that on the 10th day of May, 1970, I found evidence of the E 1/16 corner of Section 36 Township 34 & 33, North, Range 10E, Fourth, Principal Meridian, as described hereon; and that from this evidence I established a new monument and accessories as described hereon to perpetuate the original location of this corner.

Resident witnesses:

J. Weix
J. Kryka

FORM 985 H. C. MILLER CO., MILWAUKEE



○ = Corner monument restored.

History of original corner establishment:

Corner set in the 1930 resurvey.

Description of corner evidence found:

Found old stake standing, Marked S1 S36 E 1/16
This corner sets just south of old town road.

Description of monument and accessories I established to perpetuate the original location of this corner.

Set 2" pipe with brass cap, rock mound.

New B.T.'s

Elm 8" N54W 9 Ft. 8 inches

Hard Maple 6" N65E 13 Ft. 3 inches

B.T.'s faced at base of tree and scribed BT.



Dated at Antigo, Wis., this 10th day of May, 1970

Signature Raymond J. Hallisy Title Reg. Land Surveyor Registration No. S-685
(County Surveyor, Registered Land Surveyor, or other duly authorized official)

Office of Register of Deeds, County of _____, I hereby certify that the within instrument was filed in this office for record on the _____ day of _____, 19____ at _____ o'clock _____ M.

(Register of Deeds)

By _____ Deputy