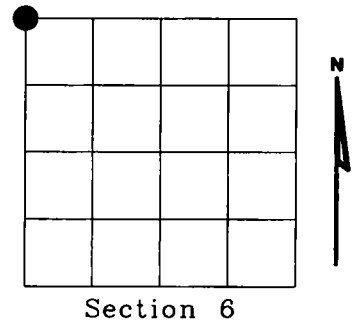


# U.S. PUBLIC LAND SURVEY MONUMENT RECORD

NOTE: This form is intended and designed to fulfill all requirements of Wisconsin Administrative Code, Chapter A-E 7.08 U.S. Public Land Survey Monument Record (3)(a)(b)(c)(d)(e)(f)(g)(h)(i). An additional sheet may be added if necessary to conform with said requirements.

(a) Corner location: Township 33 North  
 Range 11 East  
 Town of UPHAM  
 LANGLADE County, Wisconsin



Section 6

(b)(f)(g)(h) Description of monument found at this corner and if it was accepted, state all evidence (material, testimonial, occupational, plats, records, other monuments) used as a basis for accepting. If not accepted or if nothing was found, state evidence used as basis for establishing location. If reestablished through lost corner proportionate methods, indicate all monuments, distances and directions used to establish. Indicate type of monument found or set and sign post.

1860 - CORNER SET BY HERMAN C. FELLOWS, SET POST  
 B.T.'s

ELM 20 N 80 W 45 LKS.  
 BIRCH 15 N 50 E 38 LKS  
 BIRCH 12 S 45 E 60 LKS.  
 SUGAR S60W 15 LKS.

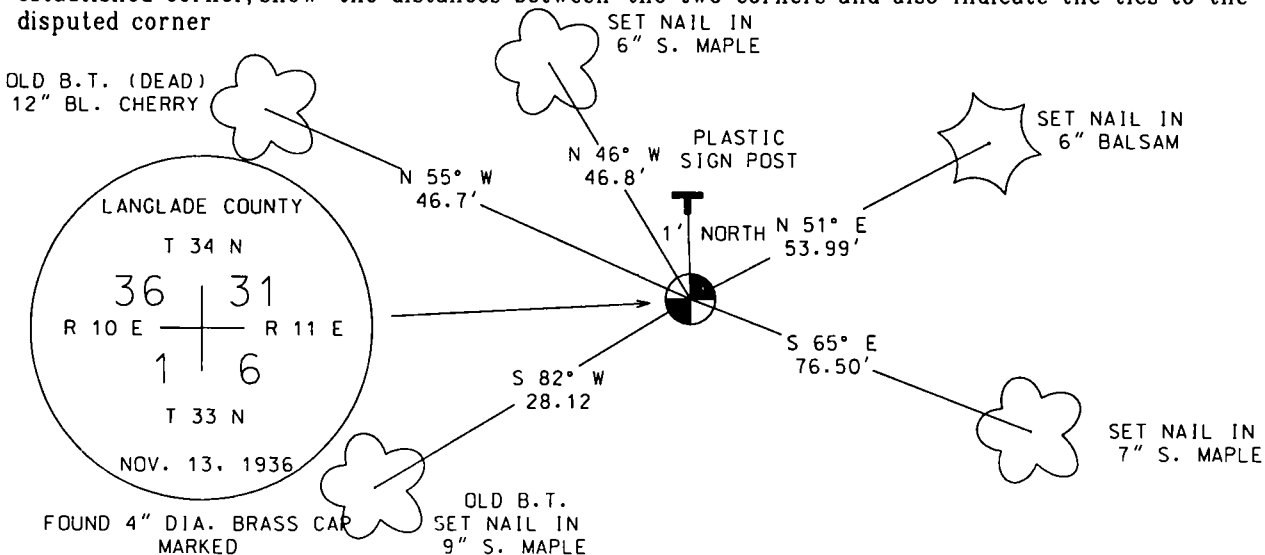
1936 - E.F. KOWALKE AND C.W. BORTH FOUND 3" GALV.  
 IRON PIPE WITH STAMPED TABLET  
 NEW B.T.'s

TEL. POLE N 18 1/2 W 40.3  
 FENCE POST N 18 1/2 W .7

1975 - WILLIAM L. KELLY, FOUND 4" PIPE WITH BRASS CAP  
 SET B.T.'s

12" BL. CHERRY N 58° W 46.25'  
 8" MAPLE S 74° W 27.45'  
 6" BL. CHERRY S 22° W 22.51'

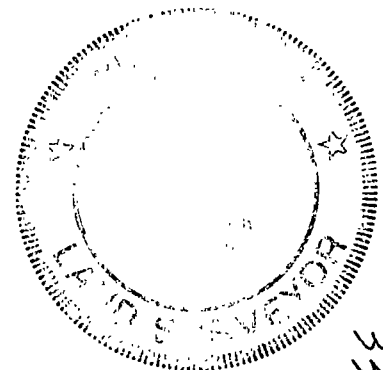
(c)(d)(e) Plan view of corner with ties to at least 4 witness monuments. If in disagreement with previously established corner, show the distances between the two corners and also indicate the ties to the disputed corner



(i) I, Dennis Roberts, Registered Land Surveyor \*S-1863, hereby certify that the corner location on this record was determined by me or under my direction and control and that this U.S. Public Land Survey Monument Record is correct and complete to the best of my knowledge and belief.

*Dennis B. Roberts*  
 Signature

11-03-99  
 Date



Index No. A1  
33-11