

434/035 0000 2021

U.S. PUBLIC LAND SURVEY MONUMENT RECORD

THE NW CORNER OF SECTION 1, T 33N, R 10E LANGLADE COUNTY, WI
CORNER WAS: (CHECK ALL THAT APPLY)

- RESTORED THROUGH ACCEPTANCE OF AN OBLITERATED EVIDENCE LOCATION.
- RESTORED THROUGH ACCEPTANCE OF A FOUND PERPETUATED LOCATION.
- DETERMINED TO BE LOST AND RE-ESTABLISHED THROUGH PROPORTIONATE METHODS.
- RESTORED/RECOVERED/REESTABLISHED IN A LOCATION THAT DIFFERS FROM A PREVIOUSLY ESTABLISHED POSITION.

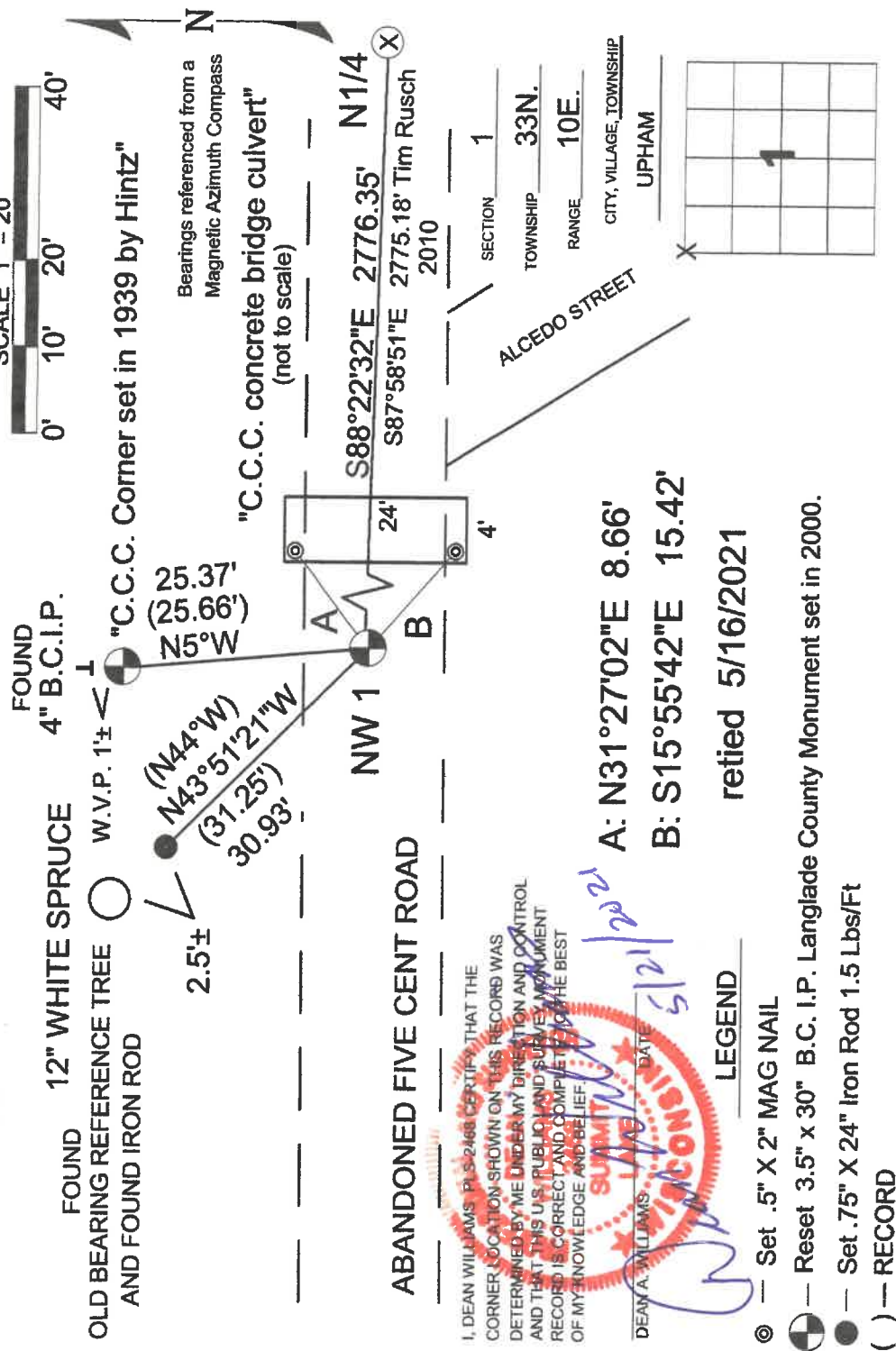
BASIS FOR MONUMENT LOCATION (DESCRIBE METHOD OF SURVEY AND CORNER AUTHENTICATION)

1865 - Original corner establishes by James L. Nowlin - Set post to corner to Sections 1,2,35,36. BT's Birch, 20", S20°W, 25 lks. Hemlock, 12" N14°W, 18 lks. Hemlock, 8", N25°E, 10 lks. Birch, 12", S55°E, 70 lks.
 1882 - Dec. 5th Dorr: Set stone with X on top, 3 feet under roadbed.
 1939 Hintz: Found stone, set 4" B.C.I.P. C.C.C. witness monument north of corner.
 1990 Bill Kelly Found witness monument and two 1.25" I.P.'s 5.53 feet apart N82°W, set 2.5" x 30" Aluminum Monument at the westerly I.P.
 8/2/2000 Dean Williams and Dave Tlusty County Surveyor did not find Kelly's Aluminum monument. Dug with backhoe and Found Dorr's stone with x on top 3.1 feet under road surface at the eastern 1.25" I.P. Set 3.5" B.C. x 30" I.P. County Monument over stone flush with ground and retied.
 6/1/2020 Dean Williams found Langlade County Monument on it's side pointing to the west. Also the two bearing trees to the south lost their nail on their side to tie to. And my previous with the tie bearing of N7°30'E was wrong, it is N5°W with a azimuth compass. Using the 2000 tie sheet's, the Hintz witness corner 25.66', and the N44°W, 31.25' rebar tie, I reset the monument and tied two new reference tree I.R.'s using the two old bearing trees to the South and tied to the Langlade County Monument

FIELD BOOK NO: 9 PAGE NO: 146

COMPANY: TIMBER WOLF LAND SURVEYING TEMPERATURE 62°

TIE SHEET



4341035 0000 2020

U.S. PUBLIC LAND SURVEY MONUMENT RECORD

THE NW CORNER OF SECTION 1, T 33N, R 10E LANGLADE COUNTY, WI
CORNER WAS: (CHECK ALL THAT APPLY)

- RESTORED THROUGH ACCEPTANCE OF AN OBLITERATED EVIDENCE LOCATION.
- RESTORED THROUGH ACCEPTANCE OF A FOUND PERPETUATED LOCATION.
- DETERMINED TO BE LOST AND RE-ESTABLISHED THROUGH PROPORTIONATE METHODS.
- RESTORED/RECOVERED/REESTABLISHED IN A LOCATION THAT DIFFERS FROM A PREVIOUSLY ESTABLISHED POSITION.

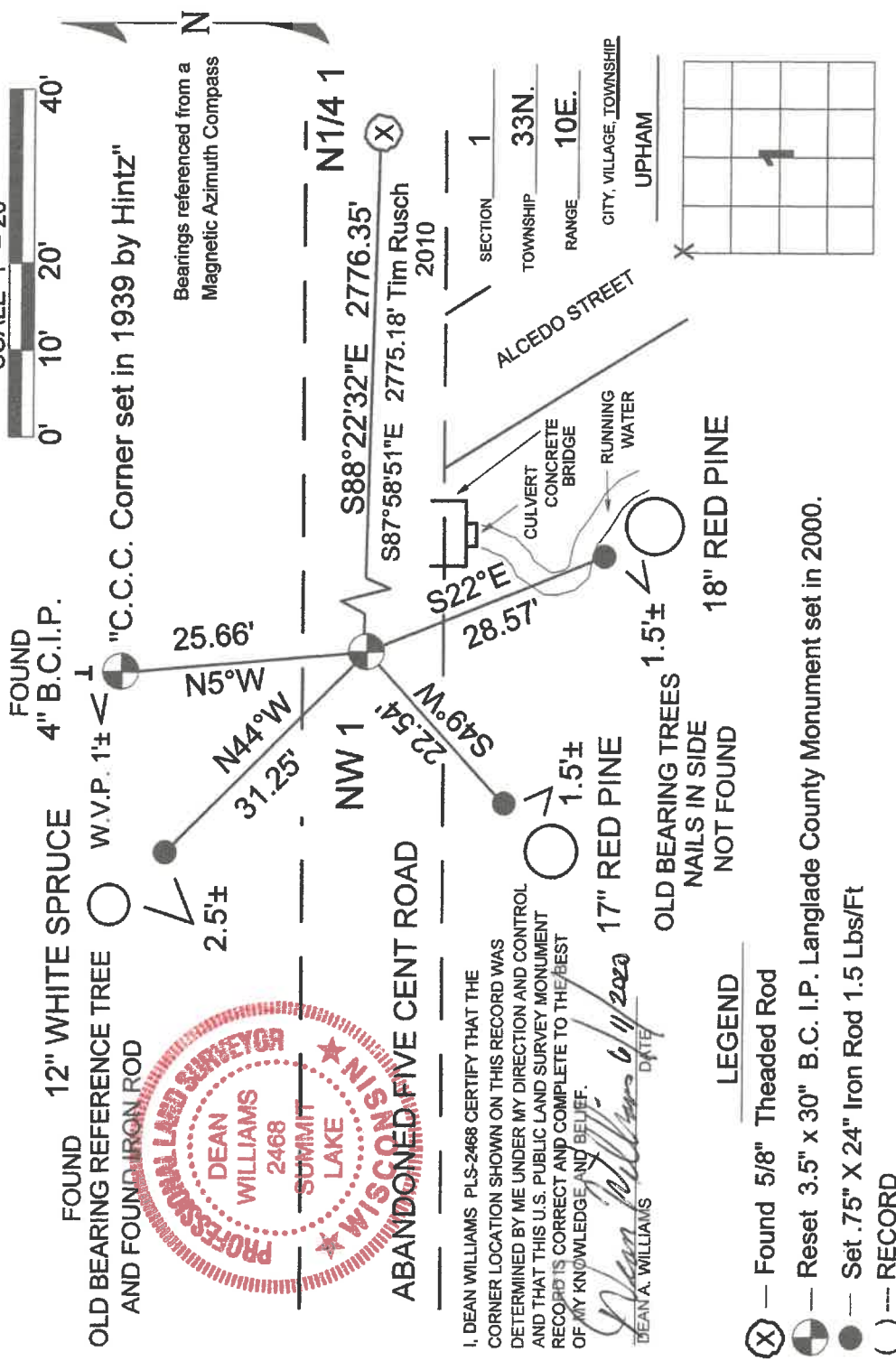
BASIS FOR MONUMENT LOCATION (DESCRIBE METHOD OF SURVEY AND CORNER AUTHENTICATION)

1865 - Original corner establishes by James L. Nowlin - Set post to corner to Sections 1.2,35,36. BT's Birch, 20", S20°W, 25 lks. Hemlock, 12" N14°W, 18 lks. Hemlock, 8", N25°E, 10 lks. Birch, 12", S55°E, 70 lks.
 1882 - Dec. 5th Dorr: Set stone with X on top, 3 feet under roadbed.
 1939 Hintz: Found stone, set 4" B.C.I.P. C.C.C. witness monument north of corner.
 1990 Bill Kelly Found witness monument and two 1.25" I.P.'s 5.53 feet apart N82°W, set 2.5" x 30" Aluminum Monument at the westerly I.P.
 8/2/2000 Dean Williams and Dave Tlusy County Surveyor did not find Kelly's Aluminum monument. Dug with backhoe and Found Dorr's stone with x on top 3.1 feet under road surface at the eastern 1.25" I.P. Set 3.5" B.C. x 30" I.P. County Monument over stone flush with ground and retied.
 6/11/2020 Dean Williams found Langlade County Monument on it's side pointing to the west. Also the two bearing trees to the south lost their nail on their side to tie to. And my previous with the tie bearing of N7°30'E was wrong, it is N5°W with a azimuth compass. Using the 2000 tie sheets, the Hintz witness corner 25.66', and the N44°W, 31.25' rebar tie, I reset the monument and tied two new reference tree I.R.'s using the two old bearing trees to the South and tied to the Langlade County Monument

FIELD BOOK NO: 9 PAGE NO: 82

COMPANY: TIMBER WOLF LAND SURVEYING TEMPERATURE 75°

TIE SHEET



I, DEAN WILLIAMS PLS-2468 CERTIFY THAT THE CORNER LOCATION SHOWN ON THIS RECORD WAS DETERMINED BY ME UNDER MY DIRECTION AND CONTROL AND THAT THIS U.S. PUBLIC LAND SURVEY MONUMENT RECORD IS CORRECT AND COMPLETE TO THE BEST OF MY KNOWLEDGE AND BELIEF.

Dean Williams 6/11/2020
 DEAN A. WILLIAMS DATE

- LEGEND**
- (X) — Found 5/8" Threaded Rod
 - ⊕ — Reset 3.5" x 30" B.C. I.P. Langlade County Monument set in 2000.
 - — Set .75" X 24" Iron Rod 1.5 Lbs/Ft
 - () — RECORD

U.S. PUBLIC LAND SURVEY MONUMENT RECORD

(Prepared and as required by S. A-E 7.08 WI Administrative Code)

The SE corner of Section 35, T. 34 N., R. 10 E., Langlade County, WI

Corner was: (check all that apply)

- Restored through acceptance of an obliterated evidence location.
- Restored through acceptance of a found perpetuated location.
- Determined to be lost and re-established through proportionate methods.
- Restored/recovered/reestablished in a location that differs from a previously established position. (Show difference in plan view below.)

Check here if additional information is shown on the reverse side of this form.

Describe record evidence, recovered physical evidence, occupational evidence, testimonial evidence and all other evidence considered in the recovery/restoration of the corner.

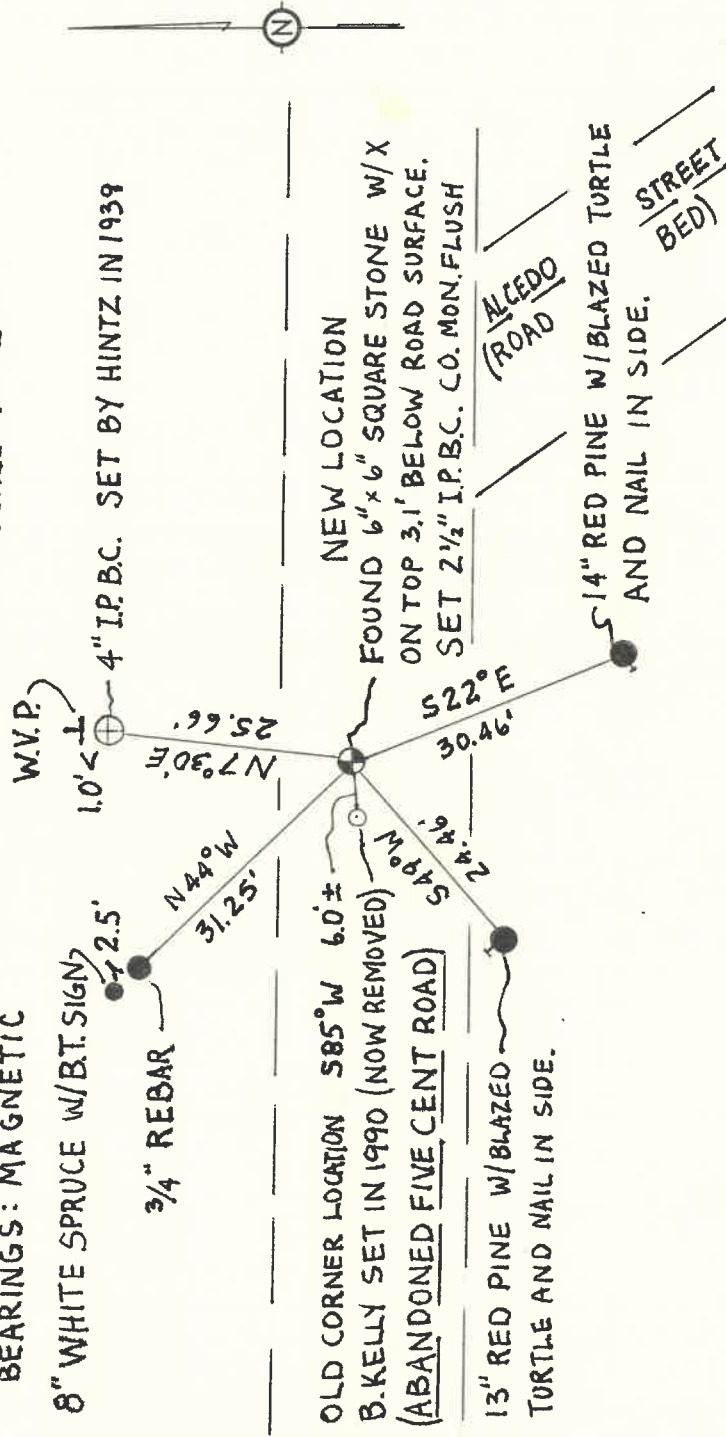
1865 ORIGINAL CORNER ESTABLISHED BY JAMES L. NOWLIN - SET POST TO COR TO SECTIONS 1,2,35,36. BT'S: BIRCH 20 SZOW 251ks., HEMLOCK 12 N14W 181ks., HEMLOCK 8 N25E 101ks., BIRCH 12 S55E 701ks.
 1882 12/5 DORR-SET STONE W/X ON TOP, 3' UNDER ROAD BED.
 1939 HINTZ - FOUND STONE W/X ON TOP, -SET 4" I.P.B.C. WIT. COR. NORTH OF COR.
 1990 B. KELLY - FOUND 2 1/4" I.P. 5.53' APART S82°E (MAG) - SET ALUM. 2 1/2" x 30" MONUMENT IN PLACE OF THE WESTERLY 1/4" I.P.
 DEAN WILLIAMS 8/2/2000 - SEARCHED FOR DORR'S STONE WITH DAVE TLUSTY BY DIGGING WITH BACK HOE. - FOUND DORR'S STONE UNDER EASTERLY 1/4" I.P. 3.1' Physical description of the monument set: DOWN UNDER ROAD BED.
 SET 2 1/2" I.P. B.C. COUNTY MONUMENT OVER STONE FLUSH WITH GROUND AND RETIED. SET W.V.P. 1.0' NORTH OF HINTZ WIT. COR.

3410350000

Describe the accessories used to perpetuate the location of the corner. Include a plan view drawing and indicate accessories found/set. Describe measuring point on bearing trees. Show any topographic features that would aid in future recovery of the corner.

BEARINGS: MAGNETIC

SCALE 1" = 20'



The SE

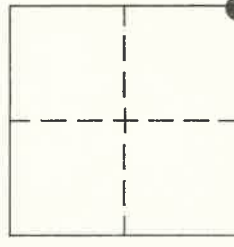
SURVEYORS SEAL

corner of Section 35

T. 34 N., R. 10 E.
Langlade County, WI



INDEX No. 221
34-10



O = Location of corner

I, Dean A. Williams RS2468 certify that the corner location shown on this record was determined by me or under my direction and control and that this U.S. Public Land Survey Monument Record is correct and complete to the best of my knowledge and belief.

Dean Williams 01/04/2001
Signature Date

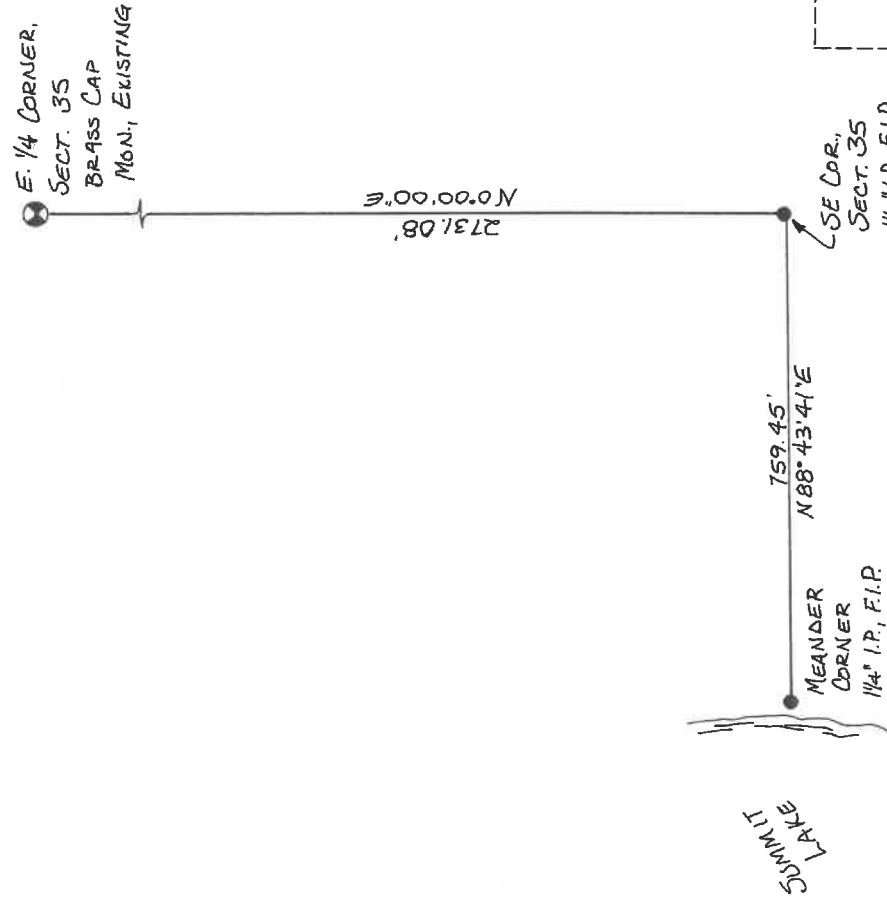
Describe any material discrepancy between the location of the corner as restored or reestablished and the location of that corner as previously restored or reestablished by distance and direction. Show the discrepancy on the plan view drawing under (d), above. Show the distances between the corner as previously restored or reestablished and (1) the corner as restored or reestablished, and (2) to at least 2 of the witness monuments shown on the drawing in (d), above.

NONE

(f) Was the corner restored through acceptance of (1) an obliterated evidence location, or, (2) a found perpetuated location?
(2)

(g & h) Was the corner reestablished through lost corner proportionate methods? If so, show the method, including the directions and distances to other public land survey corners used as evidence or used for proportioning in determining the corner location.

No.



(i) I, WILLIAM F. KELLY R.L.S. 1098
(type or print name)

certify that the corner location shown on this record was determined by me or under my direction and control and that this U.S. Public Land Survey Monument Record is correct and complete to the best of my knowledge and belief.

William F. Kelly
Signature

2/1/90
Date

