

CERTIFIED LAND CORNER RESTORATION

Index No. X-11

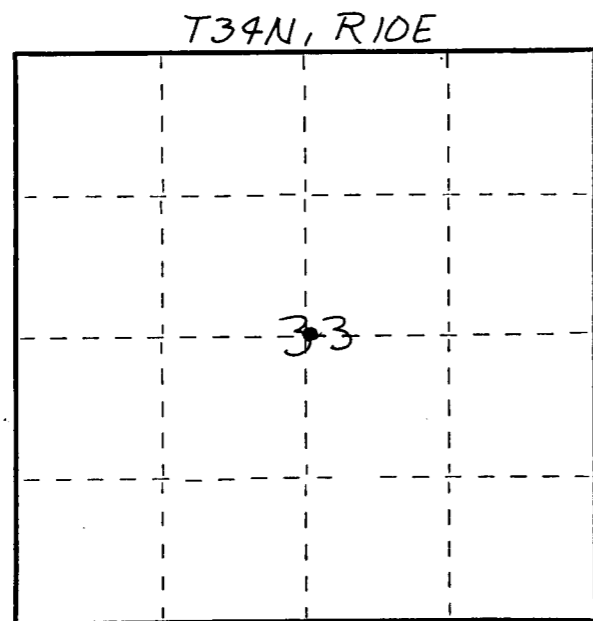
State of Wisconsin }  
County of LANGLADE } ss.

I WILLIAM F. KELLY, do hereby certify that on the 10<sup>th</sup> day of APRIL, 1981, I found evidence of the CENTER OF SECTION corner of SECTION 33 Township 39, North, Range 10 EAST, Fourth Principal Meridian, as described hereon; and that from this evidence I established a new monument and accessories as described hereon to perpetuate the original location of this corner.

Resident witnesses:

.....  
.....  
.....

FORM 985 H. C. MILLER CO., MILWAUKEE



○ = Corner monument restored.

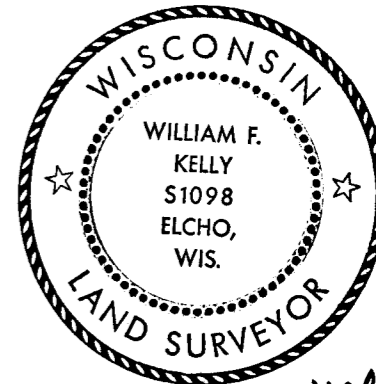
History of original corner establishment:

ORIGINAL CORNER ESTABLISHED  
BY JAMES L. NOWLIN IN JULY, 1865

*1/95  
NOTE: MAP 30399 WOULD  
INDICATE THAT THIS CORNER  
WAS SET WRONG.*

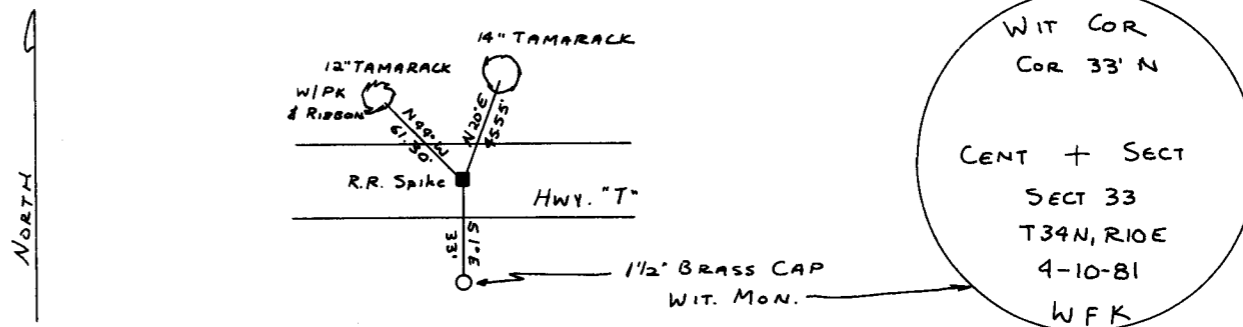
Description of corner evidence found:

SET FROM CONTROL SURVEY OF  
SECTION 33 AND PAROLE EVIDENCE



*William F. Kelly*

SET A 1 1/2" x 42" BLACK IRON PIPE WITH BRASS CAP WITNESS MONUMENT.  
Description of monument and accessories I established to perpetuate the original location of this corner.



Dated at ELCHO, Wis., this 10<sup>th</sup> day of APRIL, 1981.

Signature William F. Kelly Title COUNTY SURVEYOR Registration No. 1098  
(County Surveyor, Registered Land Surveyor, or other duly authorized official)

Office of Register of Deeds, County of....., I hereby certify that the within instrument was filed in this office for record on the..... day of....., 19..... at..... o'clock..... M.

.....  
(Register of Deeds)

By..... Deputy