

4341033 2000

U.S. PUBLIC LAND SURVEY MONUMENT RECORD

(Prepared and as required by S. A-E 7.08 WI Administrative Code)

The WEST 1/4 corner of Section 34, T. 34 N., R. 10 E., Langlade County, WI
Corner was (check all that apply)

- Restored through acceptance of an obliterated evidence location.
- Restored through acceptance of a found perpetuated location.
- Determined to be lost and re-established through proportionate methods. (show bearings and distances to PLSS corners used for proportioning.)
- Restored/recovered/re-established in a location that differs from a previously established position. (Show difference in plan view below.)
- Check here if additional information is shown on the reverse side of this form.

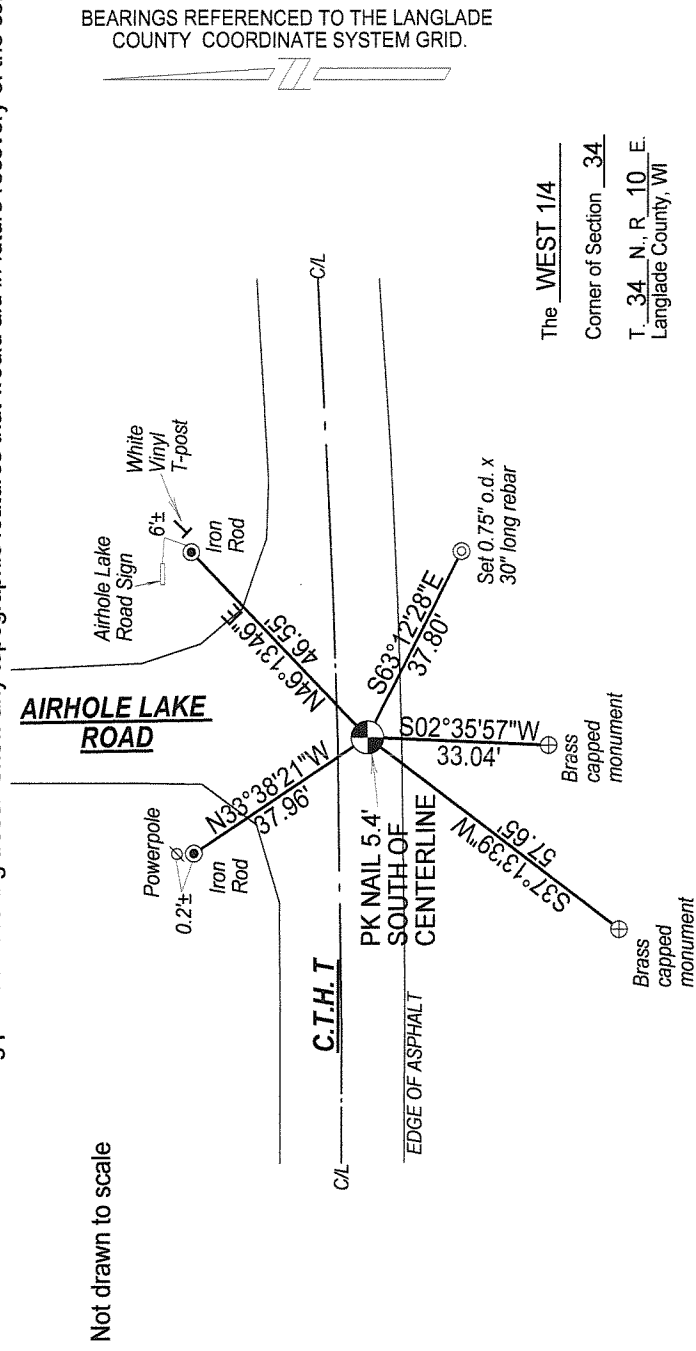
Describe record evidence, recovered physical evidence, occupational evidence, testimonial evidence, and all other evidence considered in the recovery/restoration of the corner.

- 1865- Govt Surveyor J.L. Nowlin set corner in original survey. BTs: 12" Birch S6°E, 5 links; 10" Hemlock, N22°W, 10 links.
- 1937- Langlade County surveyors recovered an iron pipe in the centerline of C.T.H. "T". Set a witness corner 50 links south.
- 1980 - Daniel Pleoeger recovered a 3/8" lag bolt 4.00' south of the centerline of C.T.H. "T". Pleoeger found existing brass capped witness monument 50 links south of lag bolt. Pleoeger set a new witness corner S38°W, 57.60' of true corner and power pole #3410-33E4, N30°W, 38.60 feet.
- 1994 - Dan Higginbotham found an existing PK nail and two brass capped ties. Higginbotham set a railroad spike over the existing PK nail and added two additional ties.
- 2011 - I found a PK nail at the Corner location, the 1937 brass cap, the 1980 aluminum monument, and two 1994 rebar ties. PK nail matches well with the existing found ties.

Physical description of the monument set:

I accept the PK nail location, and tied it out as follows.

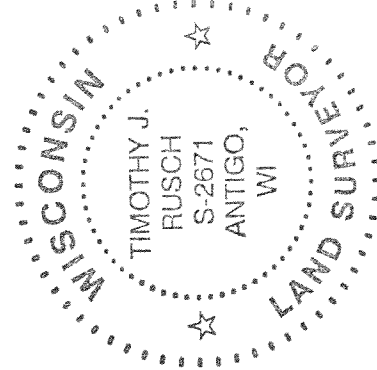
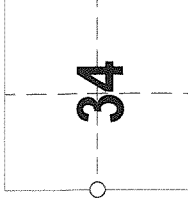
Describe the accessories used to perpetuate the location of the corner. Include a plan view drawing and indicate accessories found/set. Describe measuring point on bearing trees. Show any topographic features that would aid in future recovery of the corner.



BEARINGS REFERENCED TO THE LANGLADE COUNTY COORDINATE SYSTEM GRID.

The WEST 1/4
Corner of Section 34
T. 34 N., R. 10 E.
Langlade County, WI

SURVEYOR'S SEAL



I, Timothy J. Rusch certify that the corner location shown on this record was determined by me or under my direction and control and that this U.S. Public Land Survey Monument Record is correct and complete to the best of my knowledge and belief.

Timothy J. Rusch 12-14-2012
Signature Date

INDEX No. X-13 (34-10)

○ = Location of corner