

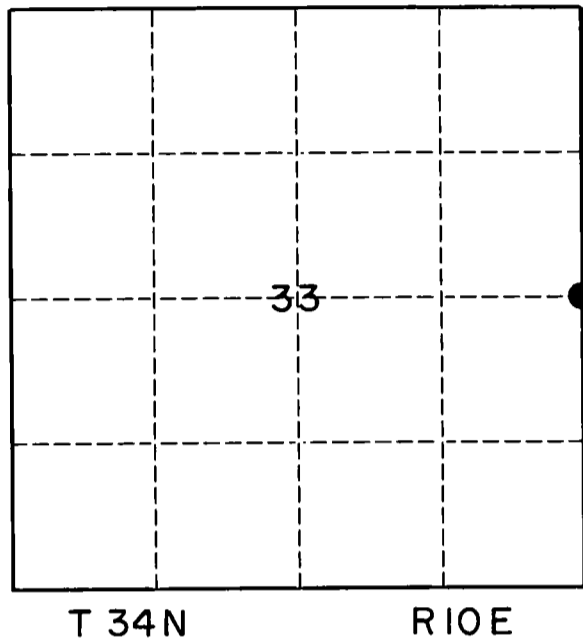
# U. S. PUBLIC LAND SURVEY MONUMENT RECORD

**INSTRUCTIONS:**

This record shall show the location of the corner and shall include all of the following nine elements (a through i).

- (a) Identify the corner by reference to the U.S. public land survey system.  
 O = Corner monument restored.

**This corner was originally established by James L. Nowlin in 1865. It has since been perpetuated.**



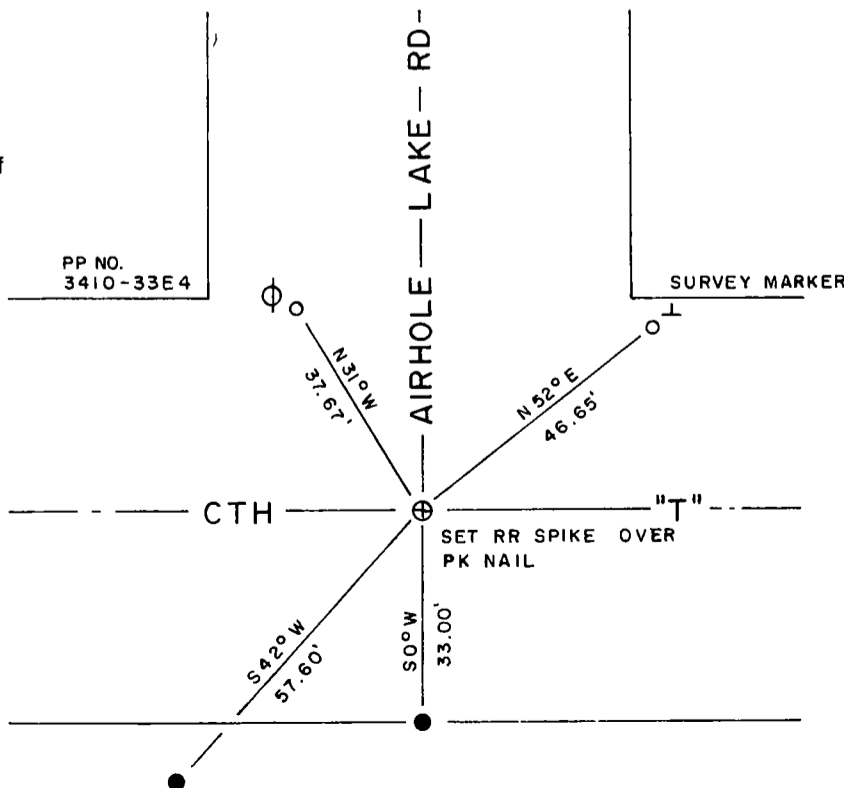
- (b) Describe any record evidence, monument evidence, occupational evidence, testimonial evidence or any other material evidence you considered, and whether the monument was found or placed.

I found an existing PK nail and two ties. The distances to the existing PK nail worked with found ties. I set a Railroad Spike over the existing PK nail and added two additional ties at this corner.

- (c) In the plan view drawing below, provide reference ties to at least 4 witness monuments, or, if the location is within a municipality, to at least 2 witness monuments. (Witness monuments shall be made of concrete, natural stone, iron or other equally durable material.) Describe witness monuments.

- (d) Show a plan view drawing depicting the relevant monuments and reference ties which is sufficient in detail to enable accurate relocation of the corner monument if the corner monument is disturbed. Indicate north.

- SET 5/8" RE-BAR
- FD BRASS CAP WIT MON.



X  
13

Describe any material discrepancy between the location of the corner as restored or reestablished and the location of that corner as previously restored or reestablished by distance and direction. Show the discrepancy on the plan view drawing under (d), above. Show the distances between the corner as previously restored or reestablished and (1) the corner as restored or reestablished, and (2) to at least 2 of the witness monuments shown on the drawing in (d), above.

N/A

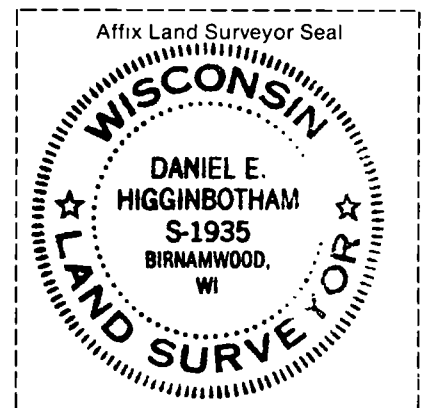
(f) Was the corner restored through acceptance of (1) an obliterated evidence location, or, (2) a found perpetuated location.?

2)

(g & h) Was the corner reestablished through lost corner proportionate methods? If so, show the method, including the directions and distances to other public land survey corners used as evidence or used for proportioning in determining the corner location.

(i) I, DAN HIGGINBOTHAM 5-1935  
(type or print name)

certify that the corner location shown on this record was determined by me or under my direction and control and that this U.S. Public Land Survey Monument Record is correct and complete to the best of my knowledge and belief.



Dan Higginbotham  
Signature

10/18/94  
Date

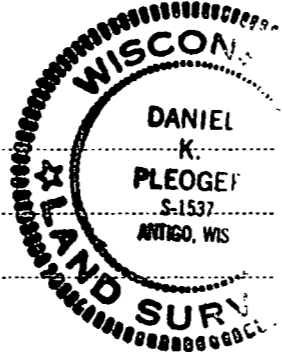
CERTIFIED LAND CORNER RESTORATION

Index No. X-13

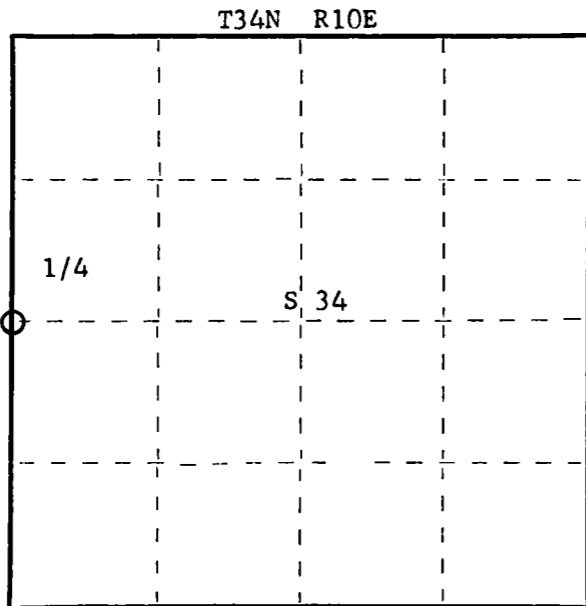
State of Wisconsin } ss.  
County of Langlade }

I Daniel K. Pleoger, do hereby certify that on the 22nd day of September, 1980, I found evidence of the Quarter corner of Sections 33 and 34 Township 34, North, Range 10 East, Fourth Principal Meridian, as described hereon; and that from this evidence I established a new monument and accessories as described hereon to perpetuate the original location of this corner.

Resident witnesses:



FORM 985 H. C. MILLER CO., MILWAUKEE



○ = Corner monument restored.

History of original corner establishment:

Original corner established by J.L. Nowlin, deputy surveyor, in 1865 from which Birch 12" bears S6°E, 5 links and Hemlock 10" N22°W, 10 links. Langlade County surveyors recovered an iron pipe in the centerline of C.T.H. "T" in 1937. Set a witness corner 50 links south.

Description of corner evidence found:

Recovered a 3/8" lag bolt 4.00 feet south of centerline of C.T.H. "T".  
Recovered a 4" iron pipe with 4" brass cap, stamped:  
Pipe sets 50 links south of bolt.  
Projects 8" above ground.

Langlade County  
T34N R10E  
1/4 33+34  
11-9-37  
Cor. 50 lks. N

Description of monument and accessories I established to perpetuate the original location of this corner.

Set a 2-1/2" aluminum A-1 monument S38°W 57.60 feet of true corner for witness corner, stamped:  
Monument projects 18" above ground.  
New B.O. -  
Power Pole #3410-33E4 N30W, 38.60 feet.

T34N R10E  
1/4 33+34 W.C.  
N38E 57.6 ft.  
S1537 - 1980

Dated at Rhinelander, Wis., this 26th day of November, 1980

Signature Daniel K. Pleoger Title Registered Land Surveyor Registration No. S-1537  
(County Surveyor, Registered Land Surveyor, or other duly authorized official)

Office of Register of Deeds, County of \_\_\_\_\_, I hereby certify that the within instrument was filed in this office for record on the \_\_\_\_\_ day of \_\_\_\_\_, 19\_\_\_\_ at \_\_\_\_\_ o'clock \_\_\_\_\_ M.

(Register of Deeds)

By \_\_\_\_\_ Deputy