

CERTIFIED LAND CORNER RESTORATION

Index No. Y-11-12

State of Wisconsin }  
County of LANGLADE } ss.

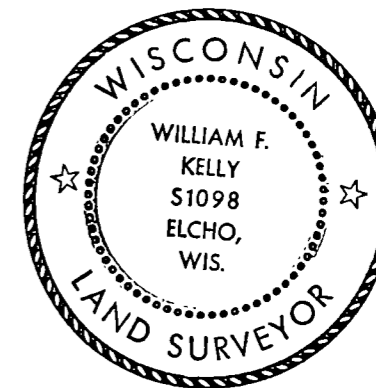
I WILLIAM F. KELLY, do hereby certify that on the 3<sup>RD</sup> day of APRIL, 1981, I found evidence of the MC ON E-W 1/8 LINE corner of SECTION 33 Township 39, North, Range 10 EAST, Fourth Principal Meridian, as described hereon; and that from this evidence I established a new monument and accessories as described hereon to perpetuate the original location of this corner.

Resident witnesses:

KNIGHTS TEMPLAR CLUB

History of original corner establishment:  
ORIGINAL CORNER ESTABLISHED  
BY JAMES L. NOWLIN IN JULY, 1865

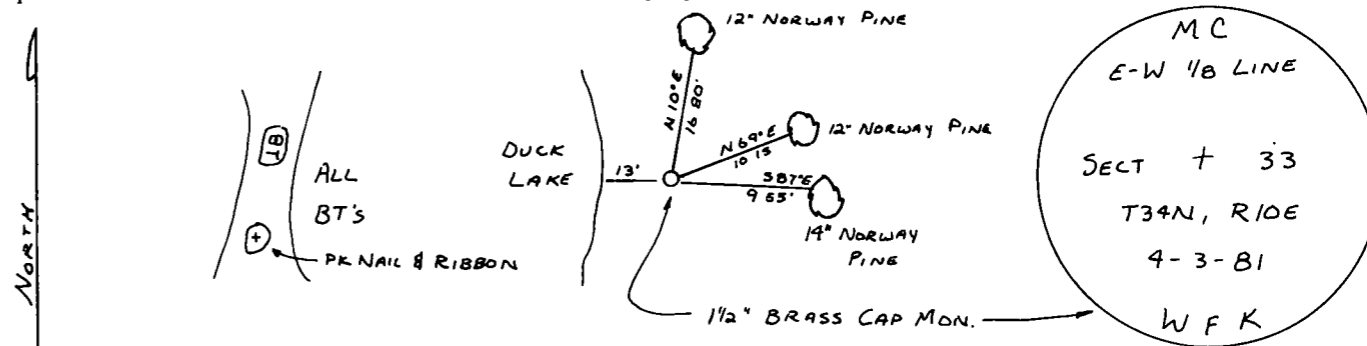
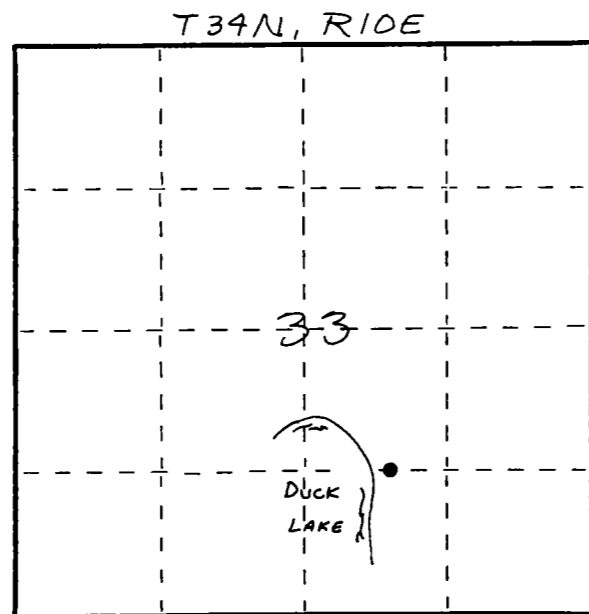
Description of corner evidence found:  
LOCATED PIPE SET BY  
DYNAMIC ENGINEERING



*William F. Kelly*

SET 1 1/2" x 42" BRASS CAP MONUMENT - BLACK IRON PIPE  
Description of monument and accessories I established to perpetuate the original location of this corner.

FORM 985 M. E. MILLER CO., MILWAUKEE



Dated at ELCHO, Wis., this 3<sup>RD</sup> day of APRIL, 1981

Signature: *William F. Kelly* Title COUNTY SURVEYOR Registration No. 1098  
(County Surveyor, Registered Land Surveyor, or other duly authorized official)

Office of Register of Deeds, County of \_\_\_\_\_, I hereby certify that the within instrument was filed in this office for record on the \_\_\_\_\_ day of \_\_\_\_\_, 19\_\_\_\_ at \_\_\_\_\_ o'clock \_\_\_\_\_ M.

(Register of Deeds)

By \_\_\_\_\_ Deputy

○ = Corner monument restored.