

CERTIFIED LAND CORNER RESTORATION

Index No. Y-13

State of Wisconsin }  
County of LANGLADE } ss.

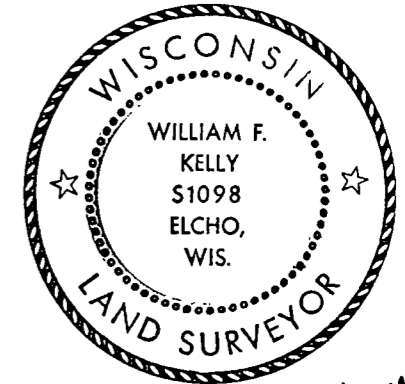
I WILLIAM F. KELLY, do hereby certify that on the 10<sup>th</sup> day of APRIL, 19 81, I found evidence of the S 1/8 CORNER ON corner of W LINE OF SEC. 34 Township 34, North, Range 10 EAST, Fourth Principal Meridian, as described hereon; and that from this evidence I established a new monument and accessories as described hereon to perpetuate the original location of this corner.

Resident witnesses:

.....  
.....  
.....

History of original corner establishment:  
ORIGINAL CORNER ESTABLISHED  
BY JAMES L NOWLIN IN JULY, 1865

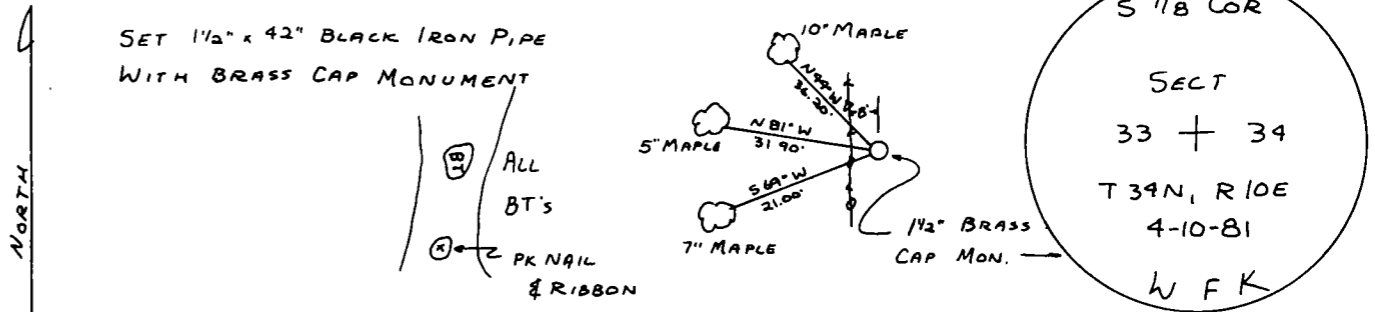
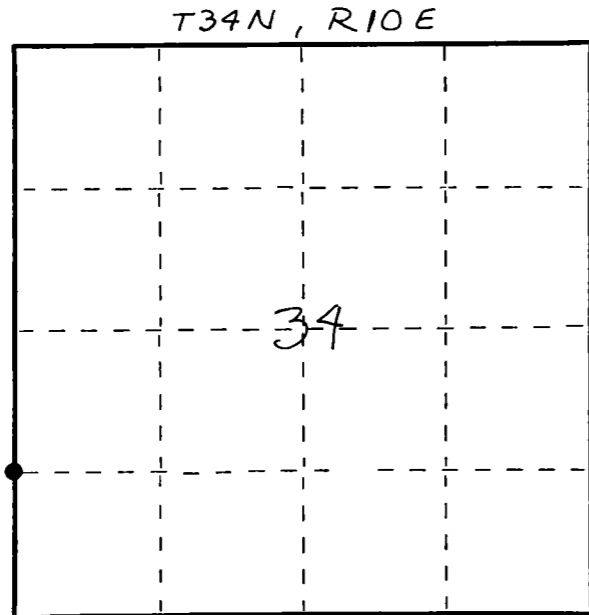
Description of corner evidence found:  
CORNER ESTABLISHED AT MID POINT  
BETWEEN THE W 1/4 CORNER AND  
THE SW CORNER SECT 34 T 34 N 10 E



*William F. Kelly*

Description of monument and accessories I established to perpetuate the original location of this corner.

FORM 985 M. C. MILLER CO., MILWAUKEE



Dated at ELCHO, Wis., this 10<sup>th</sup> day of APRIL, 19 81.

Signature William F. Kelly Title COUNTY SURVEYOR Registration No. 1098  
(County Surveyor, Registered Land Surveyor, or other duly authorized official)

Office of Register of Deeds, County of ....., I hereby certify that the within instrument was filed in this office for record on the ..... day of ....., 19..... at ..... o'clock ..... M.

.....  
(Register of Deeds)

By..... Deputy

○ = Corner monument restored.