

2008  
 43410330000  
 2022  
 FORM 993 H. C. MILLER CO., MILWAUKEE

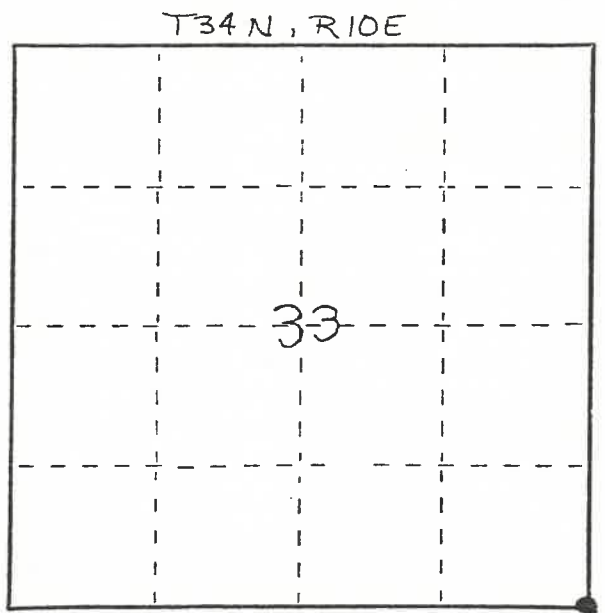
CERTIFIED LAND CORNER RESTORATION

Index No. A-13  
33-10

State of Wisconsin }  
 County of LANGLADE } ss.

I, WILLIAM F. KELLY, do hereby certify that on the 5<sup>th</sup> day of Feb., 1981, I found evidence of the SE corner of Sec. 33 Township 34, North, Range 10 EAST, Fourth Principal Meridian, as described hereon; and that from this evidence I established a new monument and accessories as described hereon to perpetuate the original location of this corner.

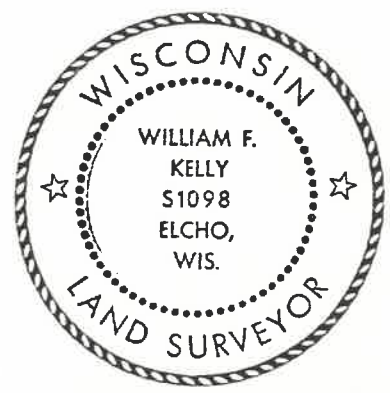
Resident witnesses:  
 \_\_\_\_\_  
 \_\_\_\_\_  
 \_\_\_\_\_



○ = Corner monument restored.

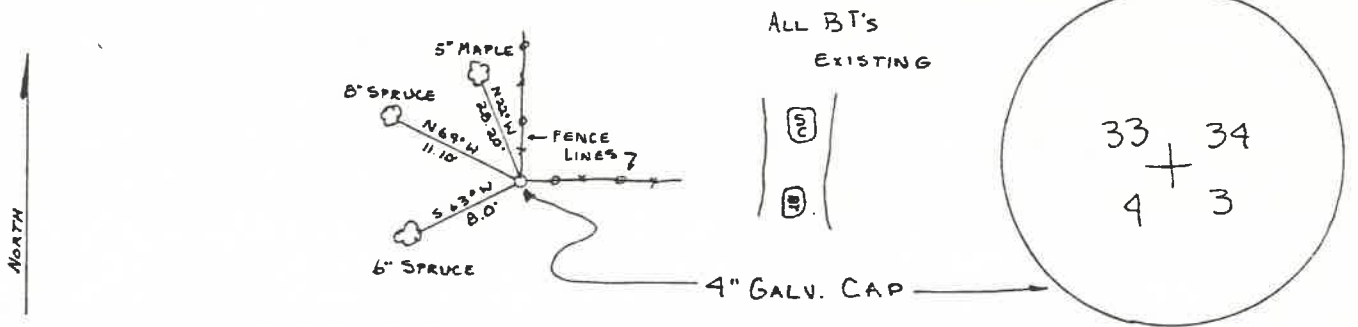
History of original corner establishment:  
 ORIGINAL CORNER ESTABLISHED  
 BY HIRAM C. FELLOWS IN 1860.

Description of corner evidence found:  
 FOUND 4" GALVANIZED CAP IN PLACE.  
 MONUMENT WAS SET DURING RESURVEY  
 OF TOWNSHIP IN 1938.  
 LOCATED WITNESS TREES.



*William F. Kelly*

Description of monument and accessories I established to perpetuate the original location of this corner.



Dated at ELCHO, Wis., this 5<sup>th</sup> day of FEB., 1981.

Signature William F. Kelly Title COUNTY SURVEYOR Registration No. 1098  
 (County Surveyor, Registered Land Surveyor, or other duly authorized official)

Office of Register of Deeds, County of \_\_\_\_\_, I hereby certify that the within instrument was filed in this office for record on the \_\_\_\_\_ day of \_\_\_\_\_, 19\_\_\_\_ at \_\_\_\_\_ o'clock \_\_\_\_\_ M.

\_\_\_\_\_  
 (Register of Deeds)  
 By \_\_\_\_\_ Deputy

*SEE →  
 OVER*

09/09/2008 D. TUSTY FB 22-32

REMOVED KEY BT:

7" DOUBLE HOLE, N15W, 28.61 FT. TO NAIC IN EAST FACE.

NEW BT:

SPACE, 7", 55ZE, 22.25 FT. TO NAIC IN SW FACE.

ADDED BT SIGNS TO BOTH.