

CERTIFIED LAND CORNER RESTORATION

34-10  
Index No. Y-5

State of Wisconsin }  
County of Lan glade } ss.

History of original corner establishment:

I Raymond J. Hallisy, do hereby certify that on the 25th day of May, 1968, I found evidence of the S 1/16 corner of Section 32 Township XIII 34, North, Range 10, Fourth, Principal Meridian, as described hereon; and that from this evidence I established a new monument and accessories as described hereon to perpetuate the original location of this corner.

Corner set in the 1930's by: C. W. Borth  
E. F. Kowalke  
D. A. Hintz

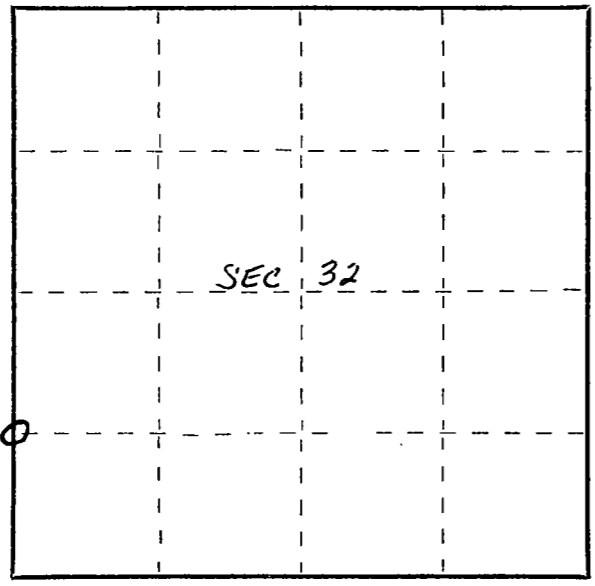
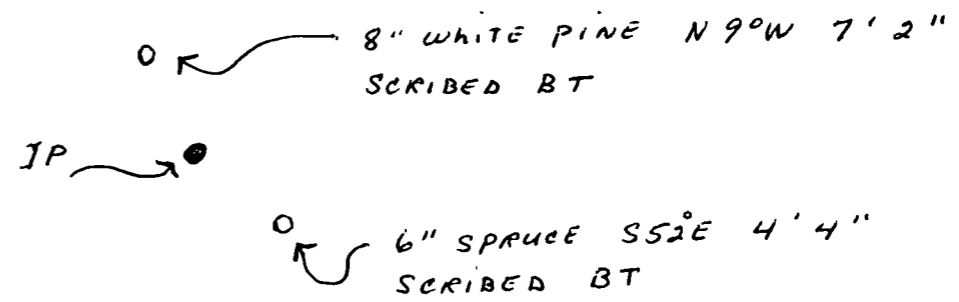
Description of corner evidence found:

**Found squared stake in swamp partly down.  
Stake marked S 1/16 S31 S32**

Resident witnesses:  
.....  
.....  
.....

Description of monument and accessories I established to perpetuate the original location of this corner.

**Set Std. 1 1/2" pipe with cap marked S 1/16**



○ = Corner monument restored.

Dated at Artigo, Wis., this 25th day of May, 1968

Signature Raymond J. Hallisy Title Reg. Land Surveyor Registration No. S-685  
(County Surveyor, Registered Land Surveyor, or other duly authorized official)

Office of Register of Deeds, County of \_\_\_\_\_, I hereby certify that the within instrument was filed in this office for record on the \_\_\_\_\_ day of \_\_\_\_\_, 19\_\_\_\_ at \_\_\_\_\_ o'clock \_\_\_\_\_ M.

.....  
(Register of Deeds)

By..... Deputy

FORM 985 H C MILLER CO., MILWAUKEE