

CERTIFIED LAND CORNER RESTORATION

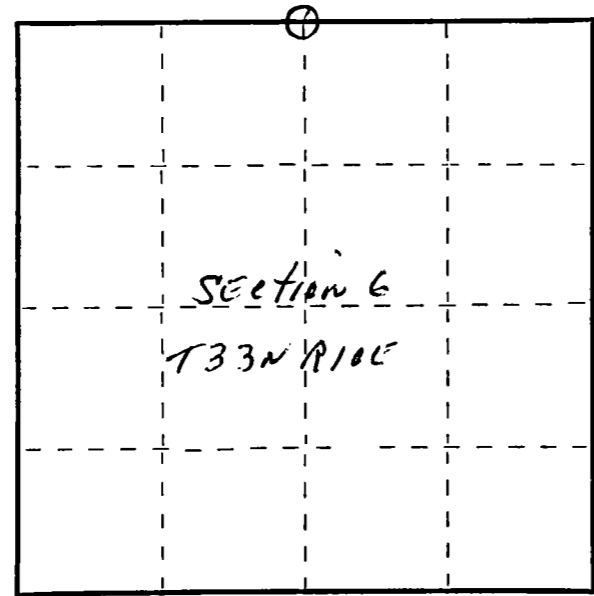
Index No. **A-3**  
33-10

State of Wisconsin }  
County of Langlade } ss.

I, Raymond J. Hallisy, do hereby certify that on the 28th day of July, 1979, I found evidence of the 1/4 corner of Section 6 & 31 Township 33 & 34 10E, North, Range 10E, Fourth Principal Meridian, as described hereon; and that from this evidence I established a new monument and accessories as described hereon to perpetuate the original location of this corner.

Resident witnesses:

.....  
.....  
.....



○ = Corner monument restored.

History of original corner establishment:

Corner set in the 1930 resurvey.

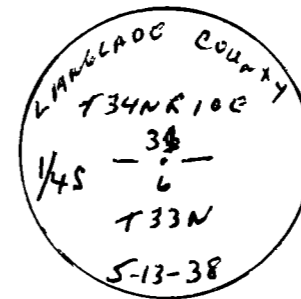
Description of corner evidence found:

4" pipe with brass cap  
Stone with X N58E 7.4 Links

Description of monument and accessories I established to perpetuate the original location of this corner.

New BT's

4" Hard Maple N89° 21'  
3" Hard Maple N7 E 5' 1"  
5" Yellow Birch N80W 23' 2"



Dated at Antigo, Wis., this 28th day of July, 1979.

Signature Raymond J. Hallisy Title Reg. Surveyor Registration No. S685  
(County Surveyor, Registered Land Surveyor, or other duly authorized official)

Office of Register of Deeds, County of \_\_\_\_\_, I hereby certify that the within instrument was filed in this office for record on the \_\_\_\_\_ day of \_\_\_\_\_, 19\_\_\_\_ at \_\_\_\_\_ o'clock \_\_\_\_\_ M.

.....  
(Register of Deeds)

By.....Deputy