

CERTIFIED LAND CORNER RESTORATION

Index No. T-5

State of Wisconsin }
County of Lanside } ss.

History of original corner establishment:

4" Brass cap set in the 1930 resurvey

I Raymond J. Hallisy, do hereby certify that on the 11th day of April, 1979, I found evidence of the 1/4 corner of Section 29 & 30 Township 34, North, Range 10E, Fourth Principal Meridian, as described hereon; and that from this evidence I established a new monument and accessories as described hereon to perpetuate the original location of this corner.

Description of corner evidence found:

See above

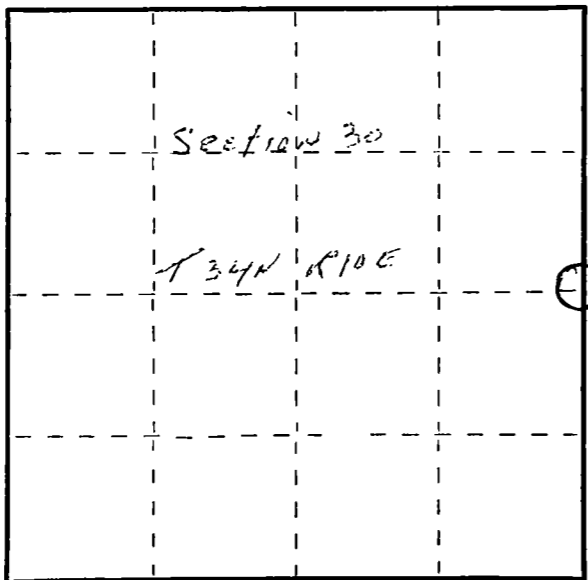
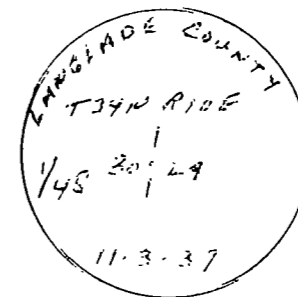
Resident witnesses:

.....
.....
.....

Description of monument and accessories I established to perpetuate the original location of this corner.

New BT's

- 8" Red Maple N50W 23.5 Ft.
- 6" Red Maple S3W 38.9 Ft.
- 6" Red Maple S38W 52 Ft.



○ = Corner monument restored.

Dated at Antigo, Wis., this 11th day of April, 1979

Signature Raymond J. Hallisy Title Reg. Surveyor Registration No. S685
(County Surveyor, Registered Land Surveyor, or other duly authorized official)

Office of Register of Deeds, County of _____, I hereby certify that the within instrument was filed in this office for record on the _____ day of _____, 19____ at _____ o'clock _____ M.

.....
(Register of Deeds)

By _____ Deputy