

CERTIFIED LAND CORNER RESTORATION

Index No. V. 3

State of Wisconsin }  
County of Lancaster } ss.

History of original corner establishment:

Corner set in the 1930 resurvey.

I Raymond J. Hallisy, do hereby certify that on the 8th day of April, 1979, I found evidence of the 1/4 corner of Section 30 & 31 Township 34, North, Range 10E, Fourth Principal Meridian, as described hereon; and that from this evidence I established a new monument and accessories as described hereon to perpetuate the original location of this corner.

Description of corner evidence found:

4" pipe with brass cap

Rock with X 10 Links East

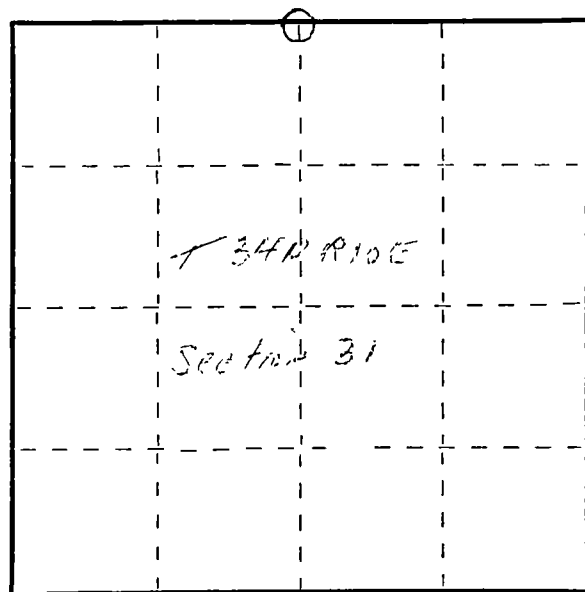
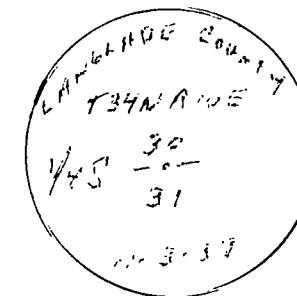
Resident witnesses:

.....  
.....  
.....

Description of monument and accessories I established to perpetuate the original location of this corner.

New BT's

6" Cherry N46E 8.5 Ft.  
7" Cherry NO 16.6 Ft.  
6" Spruce N54W 21.7 Ft.



○ = Corner monument restored.

Dated at Antigo, Wis., this 8th day of April, 1979.

Signature Raymond J. Hallisy Title Reg. Surveyor Registration No. S-685  
(County Surveyor, Registered Land Surveyor, or other duly authorized official)

Office of Register of Deeds, County of \_\_\_\_\_, I hereby certify that the within instrument was filed in this office for record on the \_\_\_\_\_ day of \_\_\_\_\_, 19\_\_\_\_ at \_\_\_\_\_ o'clock \_\_\_\_\_ M.

.....  
(Register of Deeds)

By \_\_\_\_\_ Deputy