

CERTIFIED LAND CORNER RESTORATION

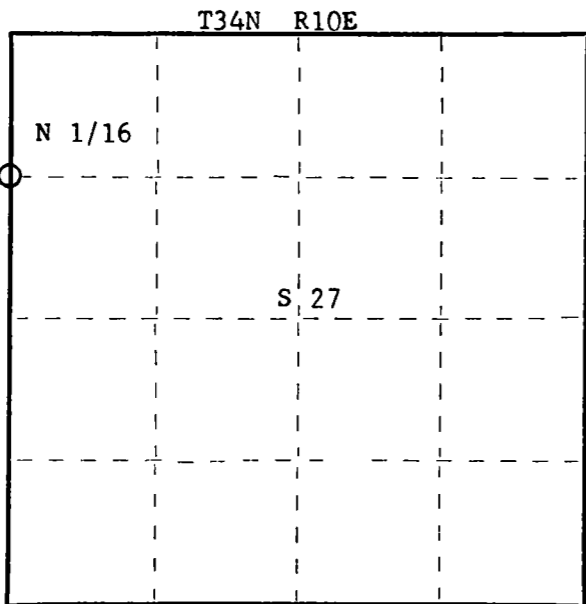
Index No. S-13

State of Wisconsin }  
County of Langlade } ss.

I Daniel K. Pleoger, do hereby certify that on the 11th day of August, 1980, I found evidence of the N 1/16 corner of Sections 27 and 28 Township 34, North, Range 10 East, Fourth Principal Meridian, as described hereon; and that from this evidence I established a new monument and accessories as described hereon to perpetuate the original location of this corner.

Resident witnesses:

.....  
.....  
.....



○ = Corner monument restored.

History of original corner establishment:

Langlade County monument recovered.

Description of corner evidence found:

Ran traverse from section corners 21-22-27-28 to 1/4 corner between sections 27, 28 for a distance of 2822.043 feet at bearing S1-49-24E. Position of N 1/16 is 1411.022 feet intermediate. At this point is a 1-1/2" I.D. iron pipe with brass cap - stamped:

Recovered OBT's -

Sugar 6" N30°E 10.20 feet

Sugar 7" N35°W 16.85 feet

both scribed B.T.

T34N R10E

28 + 27

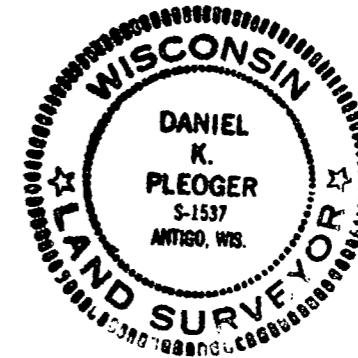
N 1/16

Description of monument and accessories I established to perpetuate the original location of this corner.

Marked NBT -

Sugar 6" S73°W 20.54 feet

scribed 1/16 B.T.



Dated at Rhineland, Wis., this 16th day of October, 1980

Signature Daniel K. Pleoger Title Registered Land Surveyor Registration No. 1537  
(County Surveyor, Registered Land Surveyor, or other duly authorized official)

Office of Register of Deeds, County of \_\_\_\_\_, I hereby certify that the within instrument was filed in this office for record on the \_\_\_\_\_ day of \_\_\_\_\_, 19\_\_\_\_ at \_\_\_\_\_ o'clock \_\_\_\_\_ M.

.....  
(Register of Deeds)

By \_\_\_\_\_ Deputy

CERTIFIED LAND CORNER RESTORATION

34-10

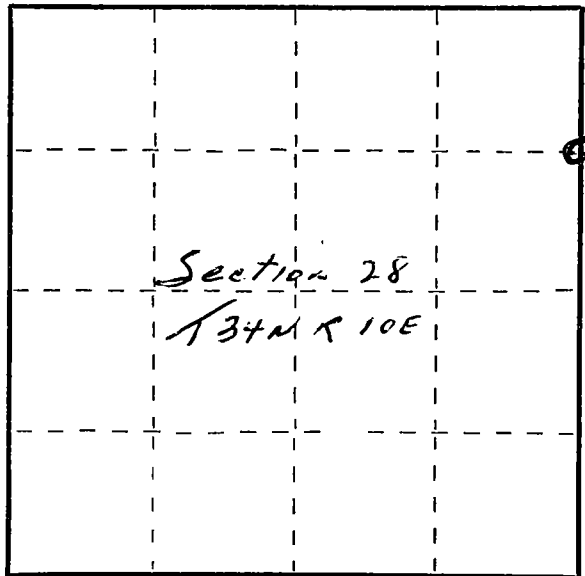
Index No. 5-13

State of Wisconsin }  
County of Lacrosse } ss.

I Raymond Hallisy do hereby certify that on the 28<sup>th</sup> day of October, 1972, I found evidence of the N 1/4 corner of Section 28 Township 34, North, Range 10E, Fourth, Principal Meridian, as described hereon; and that from this evidence I established a new monument and accessories as described hereon to perpetuate the original location of this corner.

Resident witnesses:

.....  
.....  
.....



○ = Corner monument restored.

History of original corner establishment:

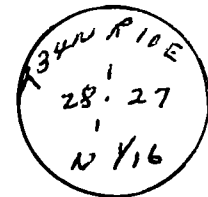
Corner Set in the 1930 resurvey

Description of corner evidence found:

Corner Standing in poor shape  
Yellow Birch BT S55E 23.3 LKS

Description of monument and accessories I established to perpetuate the original location of this corner.

Set 2" iron pipe with brass cap  
New BT's  
Hard Maple 4" N26E 10FT 4 in.  
Hard Maple 7" N35W 17 FT



Dated at Antigo, Wis., this 28<sup>th</sup> day of October, 1972

Signature Raymond Hallisy Title Reg Land Surveyor Registration No. 5 00685  
(County Surveyor, Registered Land Surveyor or other duly authorized official)

Office of Register of Deeds, County of \_\_\_\_\_, I hereby certify that the within instrument was filed in this office for record on the \_\_\_\_\_ day of \_\_\_\_\_, 19\_\_\_\_ at \_\_\_\_\_ o'clock \_\_\_\_\_ M.

.....  
(Register of Deeds)

By \_\_\_\_\_ Deputy