

# U.S. PUBLIC LAND SURVEY MONUMENT RECORD

Instructions: This record shall show the location of the corner and shall include all of the following nine elements (a through i).

- (a) Identify the corner by reference to the U.S. public land survey system.

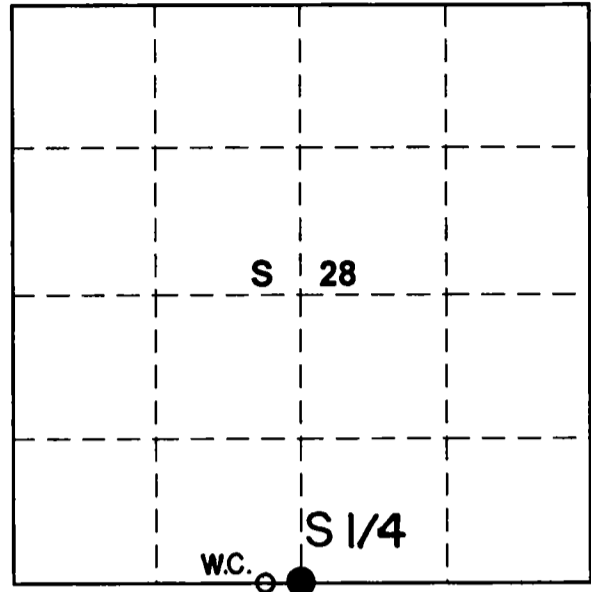
○ = Corner monument restored.

S-1/4 Corner

Sec. 28, T 34 N, R 10E

Type of Monument:

1"x 17' iron pipe set for witness corner



**LANGLADE COUNTY**

- (b) Describe any record evidence, monument evidence, occupational evidence, testimonial evidence or any other material evidence you considered, and whether the monument was found or placed.

Original witness corner established in 1865 by J.L. Nowlin Gov.t Deputy surveyor from which Spruce 10" bears N15W 6lks. And spruce 12" bears S40W 4lks.

In 1939 D.A. Hintz county surveyor ran line between sections 28 and 33 for a total distance of 5184.30'. Positioned one quarter corner 2592.15' proportional. Set a witness corner at 2834.7' of SE section corner. In January of 1995 surveyed same for a total distance of 5182.34'. At the computed position of Hintz witness corner we recovered his wood post submerged Under ice and muck.

Set a 1"x17' iron pipe 9.0' N89 22' 38"W on line of old post for new witness corner left old post as found. Witness monument sets 5.0' west of waters edge, and N89 22' 38"W 252.53' of quarter corner position in lake.

- (c) In the plan view drawing below, provide reference ties to at least 4 witness monuments, or, if the location is within a municipality, to at least 2 witness monuments. (Witness monuments shall be made of concrete, natural stone, iron or other equally durable material).

Describe witness monuments:

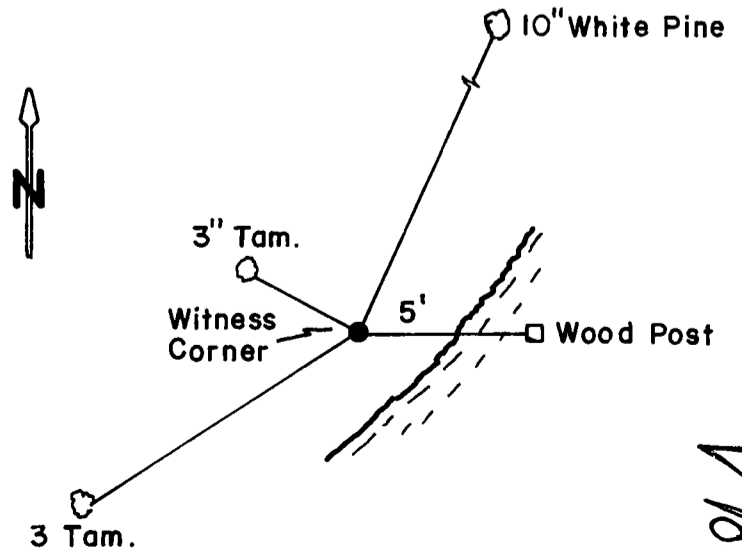
old B.T. 10" white pine N24E 51.66'  
New B.Ts 3" Tamarack N59W 6.66'  
Tamarack 3' S59W 17.44'  
Lower blaze scribed B.T.

Set 4"x4" tamarack post w/sign 1.50' North

- (d) Show a plan view drawing depicting the relevant monuments and reference ties which is sufficient in detail to enable accurate relocation of the corner monument if the corner monument is disturbed. Indicate north.

**Monument Set**

1"x 17' Iron Pipe



County File No. \_\_\_\_\_

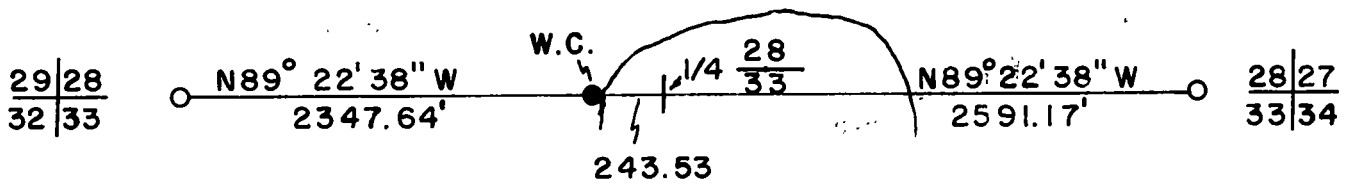
11-01 A

(e) Describe an material discrepancy between the location of the corner as restored or reestablished and the location of that corner as previously restored or reestablished by distance and direction. Show the discrepancy on the plan view drawing under (d), above. Show the distances between the corner as previously restored or reestablished and (1) the corner as restored or reestablished, and (2) to at least 2 of the witness monuments shown on the drawing in (d), above.

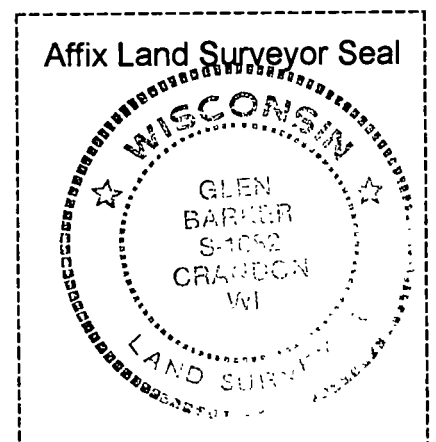
(f) Was the corner restored through acceptance of (1) an obliterated evidence location, or, (2) a found perpetuated location?

**Perpetuated location.**

(g&h) Was the corner reestablished through lost corners proportionate methods? If so, show the method, including the directions and distances to other public land survey corners used as evidence or used for proportioning in determining the corner location?



(i) I, Glen Barker  
 (type or print name) certify that the corner location shown on this record was determined by me or under my direction and control and that this U.S. Public Land Survey Monument is correct and complete to the best of my knowledge and belief.



Glen Barker  
 Signature

2/4/96  
 Date

28      34      10 E  
 SEC      TWN      RNG