

CERTIFIED LAND CORNER RESTORATION

Index No. P-25

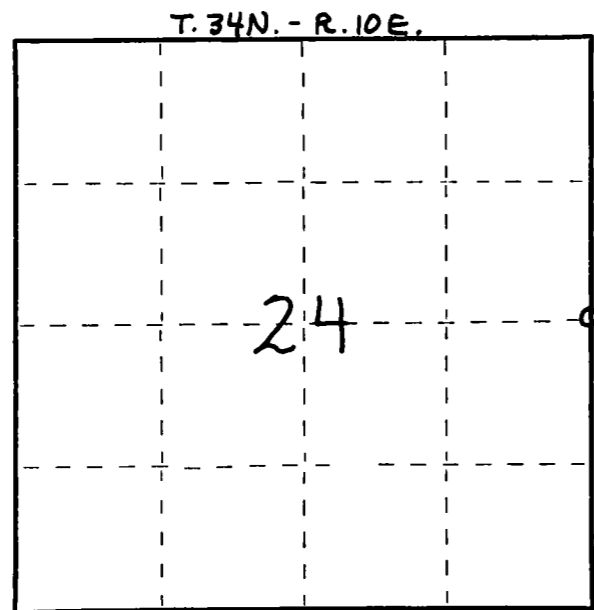
State of Wisconsin } ss.
County of LANGLADE

I WILLIAM F. KELLY, do hereby certify that on the 3RD day of DECEMBER, 1975, I found evidence of the 1/4 SECTION corner of SECTIONS 24 & 19 Township 34, North, Range 10 E, Fourth Principal Meridian, as described hereon; and that from this evidence I established a new monument and accessories as described hereon to perpetuate the original location of this corner.

Resident witnesses:

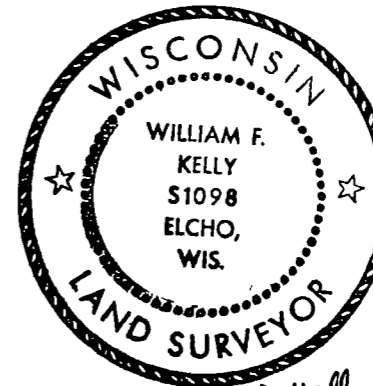
.....
.....
.....

FORM 985 H. C. MILLER CO., MILWAUKEE



○ = Corner monument restored.

History of original corner establishment:

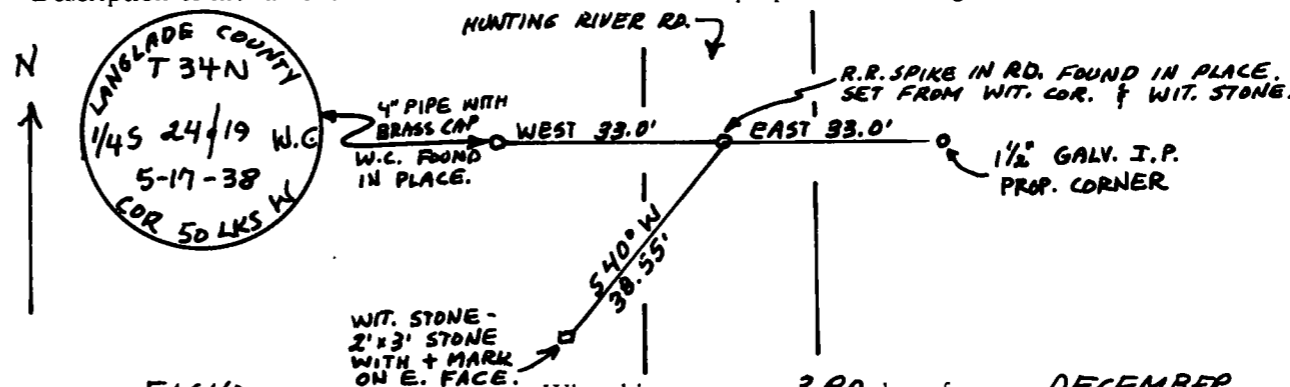


William F. Kelly

Description of corner evidence found:

LOCATED CORNER SET ON SURVEY IN 1973 BY W.F. KELLY FROM WITNESS CORNER. TIED CORNER INTO WITNESS CORNER, WITNESS STONE, AND PROPERTY CORNER.

Description of monument and accessories I established to perpetuate the original location of this corner.



Dated at ELCHO, Wis., this 3RD day of DECEMBER, 1975

Signature William F. Kelly Title REGISTERED LAND SURVEYOR Registration No. 51098
(County Surveyor, Registered Land Surveyor, or other duly authorized official)

Office of Register of Deeds, County of....., I hereby certify that the within instrument was filed in this office for record on the..... day of....., 19..... at..... o'clock..... M.

(Register of Deeds)

By.....Deputy