

CERTIFIED LAND CORNER RESTORATION

Index No. R. 21

State of Wisconsin }  
County of LANGLADE } ss.

I WILLIAM F. KELLY, do hereby certify that on the 4<sup>TH</sup> day of DECEMBER, 1975, I found evidence of the SECTION corner of SECTIONS 23, 24, 26 & 25 Township 34, North, Range 10 E, Fourth Principal Meridian, as described hereon; and that from this evidence I established a new monument and accessories as described hereon to perpetuate the original location of this corner.

Resident witnesses:

J. DREW

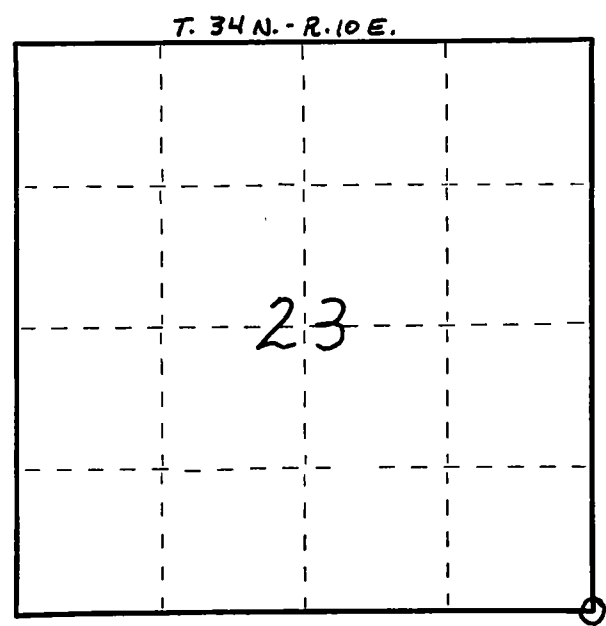
History of original corner establishment:

Description of corner evidence found: LOCATED SECTION CORNER 23/24 / 26/25 T. 34N. R. 10E.



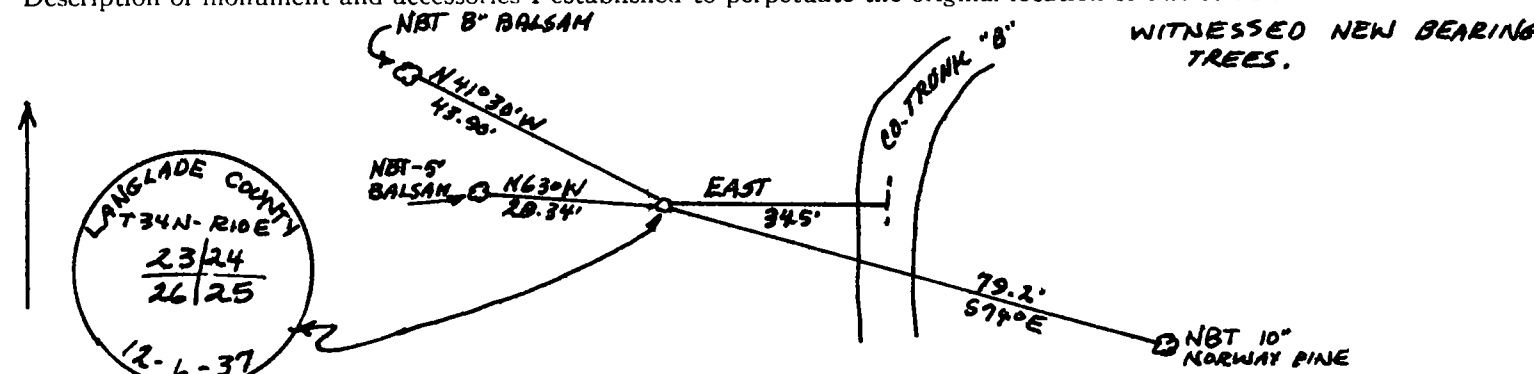
*William F. Kelly*

FORM 985 M. C. MILLER CO., MILWAUKEE



○ = Corner monument restored.

Description of monument and accessories I established to perpetuate the original location of this corner.



Dated at ELCHO, Wis., this 4<sup>TH</sup> day of DECEMBER, 1975

Signature William F. Kelly Title REGISTERED LAND SURVEYOR Registration No. 51098  
(County Surveyor, Registered Land Surveyor, or other duly authorized official)

Office of Register of Deeds, County of \_\_\_\_\_, I hereby certify that the within instrument was filed in this office for record on the \_\_\_\_\_ day of \_\_\_\_\_, 19\_\_\_\_ at \_\_\_\_\_ o'clock \_\_\_\_\_ M.

\_\_\_\_\_  
(Register of Deeds)  
By \_\_\_\_\_ Deputy