

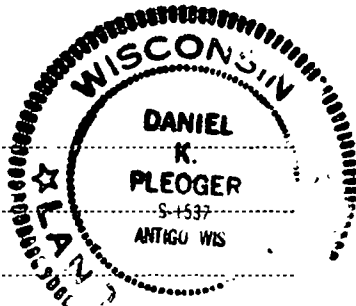
CERTIFIED LAND CORNER RESTORATION

Index No. R-15

State of Wisconsin }  
County of Langlade } ss.

I Daniel K. Pleoger, do hereby certify that on the 19th day of September, 19 80, I found evidence of the Quarter corner of Sections 22 and 27 Township 34, North, Range 10 East, Fourth Principal Meridian, as described hereon; and that from this evidence I established a new monument and accessories as described hereon to perpetuate the original location of this corner.

Resident witnesses:



History of original corner establishment:

Original corner established by J.L. Nowlin, deputy surveyor, in 1865 from which Fir 12" bears N20°E 20 links and Black Ash 12" bears S14°W 18 links. Langlade County surveyors recovered old 1/4 corner in corduroy in 1937.

Marked NBT's:

Hemlock 14" S44°W 22.6 links  
Cedar 10" S76°E 18.7 links  
Birch 9" N20°E 39.7 links

Description of corner evidence found:

Recovered a 4" iron pipe with a 4" diameter brass cap - stamped: Projecting 6" above ground.

OBT's:

Hemlock 14" S44°W 22.6 links, stump remains  
Cedar 10" S76°E 18.7 links, stump remains  
scribed B.T.

Langlade County  
T34N R10E  
1/4 22  
27  
12-8-37

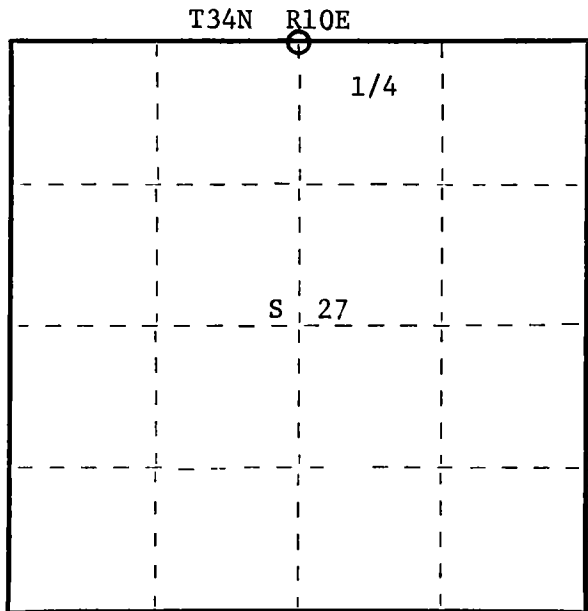
Description of monument and accessories I established to perpetuate the original location of this corner.

Monument left as recovered.

NBT's by others:

Black Ash 3" S62°W 22.00 feet  
Black Ash 4" N65°E 7.35 feet bottom scribed B.T.  
Cedar 10" S74°E 28.90 feet

FORM 983 H. C. MILLER CO., MILWAUKEE



○ = Corner monument restored.

Dated at Rhineland, Wis., this 18th day of February, 19 81

Signature Daniel K. Pleoger Title Registered Land Surveyor Registration No. 1537  
(County Surveyor, Registered Land Surveyor, or other duly authorized official)

Office of Register of Deeds, County of \_\_\_\_\_, I hereby certify that the within instrument was filed in this office for record on the \_\_\_\_\_ day of \_\_\_\_\_, 19 \_\_\_\_\_ at \_\_\_\_\_ o'clock \_\_\_\_\_ M.

(Register of Deeds)

By \_\_\_\_\_ Deputy

CERTIFIED LAND CORNER RESTORATION

Index No. R-15

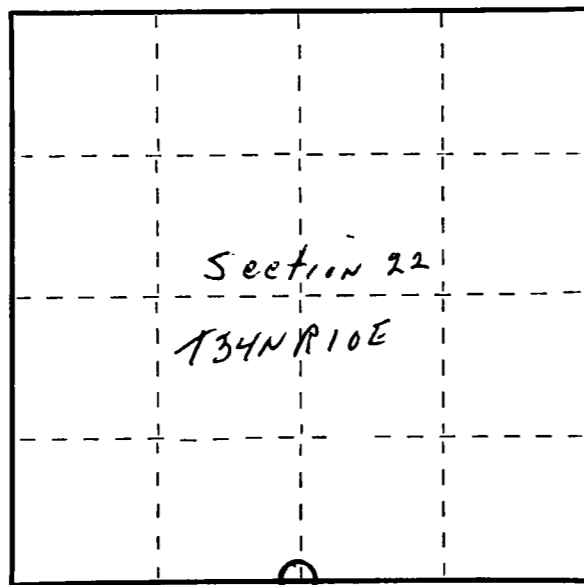
State of Wisconsin }  
County of Lanai } ss.

I Raymond J. Hallisy, do hereby certify that on the 6th day of April, 1980, I found evidence of the 1/4 corner of Section 22 & 27 Township 34, North, Range 10E, Fourth Principal Meridian, as described hereon; and that from this evidence I established a new monument and accessories as described hereon to perpetuate the original location of this corner.

Resident witnesses:

.....  
.....  
.....

FORM 985 H. C. MILLER CO., MILWAUKEE



○ = Corner monument restored.

History of original corner establishment:

4" iron pipe with brass cap. Set in the 1930 resurvey.

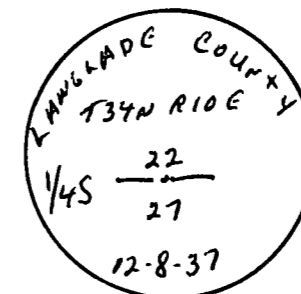
Description of corner evidence found:

4" iron pipe with brass cap.

Description of monument and accessories I established to perpetuate the original location of this corner.

New BT's

4" Black ash N62E 7'6"  
4" Black ash S56W 21'11"  
12" Cedar S67E 29'8"



Dated at Antigo, Wis., this 6th day of April, 1980.

Signature Raymond J. Hallisy Title Land Surveyor Registration No. S-685  
(County Surveyor, Registered Land Surveyor, or other duly authorized official)

Office of Register of Deeds, County of \_\_\_\_\_, I hereby certify that the within instrument was filed in this office for record on the \_\_\_\_\_ day of \_\_\_\_\_, 19\_\_\_\_ at \_\_\_\_\_ o'clock \_\_\_\_\_ M.

.....  
(Register of Deeds)

By \_\_\_\_\_ Deputy