

CERTIFIED LAND CORNER RESTORATION

Index No. R-19

State of Wisconsin }  
County of Lanlade } ss.

I Raymond J. Hallisy, do hereby certify that on the 10th day of August, 1977, I found evidence of the Section corner of 21, 22, 27, & 28 Township 34 North, Range 10E, Fourth Principal Meridian, as described hereon; and that from this evidence I established a new monument and accessories as described hereon to perpetuate the original location of this corner.

Resident witnesses:

.....  
.....  
.....

History of original corner establishment:

Corner set in the 1930 resurvey.

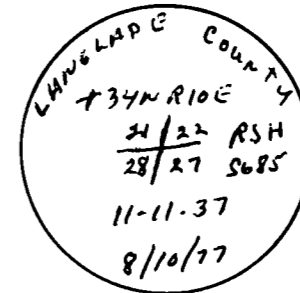
Description of corner evidence found:

4" iron pipe with brass cap  
BT 16" Hemlock S65E 6 lks

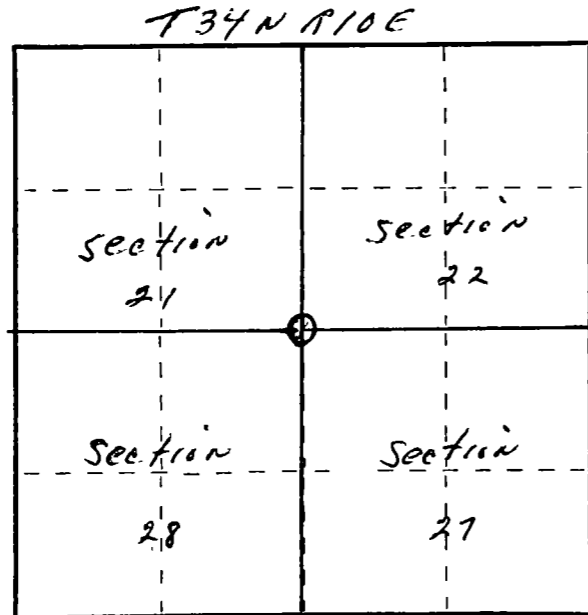
Description of monument and accessories I established to perpetuate the original location of this corner.

New BT's

6" Hard Maple      N42W      9.5 Ft.  
12" Hemlock      N11E      7 Ft.  
12" Ironwood      N76F      24.5 Ft.



FORM 985 H. C. MILLER CO. MILWAUKEE



○ = Corner monument restored.

Dated at Antigo, Wis., this 10th day of August, 1977.

Signature Raymond J. Hallisy Title Land Surveyor Registration No. S685  
(County Surveyor, Registered Land Surveyor, or other duly authorized official)

Office of Register of Deeds, County of \_\_\_\_\_, I hereby certify that the within instrument was filed in this office for record on the \_\_\_\_\_ day of \_\_\_\_\_, 19\_\_\_\_ at \_\_\_\_\_ o'clock \_\_\_\_\_ M.

.....  
(Register of Deeds)

By \_\_\_\_\_ Deputy